

**Revised and extended national wealth series:
Australia, Canada, France, Germany, Italy, Japan, the
UK and the USA**

Luis E. Bauluz

December 2017



Revised and extended national wealth series: Australia, Canada, France, Germany, Italy, Japan, the UK and the USA

Luis E. Bauluz (Paris School of Economics/World Inequality Lab)

This version: 11th December 2017

Overview

This note presents the updated wealth macro series for the eight countries covered by Piketty and Zucman (2014a): Australia, Canada, France, Germany, Italy, Japan, the UK and the USA. It discusses the adaptation of the series from the SNA93 to the SNA2008 together with the inclusion of natural capital (i.e. forestry land, mineral and energy resources) within the concept of national wealth. Finally, for each country, a specific section is devoted to explain the extension of the series and the procedure followed to splice the historical data.

I. Introduction

Piketty and Zucman (2014a) (PZ from now on) presented macro series of national wealth for 8 rich countries (Australia, Canada, France, Germany, Italy, Japan, the UK and the USA) covering the period 1970-2010. For four of these countries (France, Germany, the UK and the USA), they were able to cover a much longer time-span, going back to the 19th century or before. These series were supplemented by a methodological appendix (Piketty and Zucman, 2014b), which provides detailed information on the sources and methods followed to construct these data. We refer the interested reader to these documents for details on concepts and sources.

For the period 1970-2010, their data are largely based on official national balance sheets, which reconstruct the assets and liabilities of the different institutional sectors: households, non-profit institutions, corporations, the government and the foreign sector. Before 1970, their evidence relies mostly on the work of economic historians and on contemporaneous authors that reconstructed the wealth accounts of these countries. At the time of writing their paper, PZ used official balance sheets that followed the 1993 System of National Accounts (SNA93)¹. Since then, all countries have adapted their balance sheets to the new system of accounts: the 2008 System of National Accounts (SNA2008). Although the main concepts and valuation methods of the SNA93 are still present in the SNA2008, some changes are worth noting and will be discussed in this note.

In addition, since the writing of their paper, the WID.world database has evolved and has produced a unified framework to produce macro wealth accounts across countries. This

¹ The only exception is Australia, whose official statistics had already adapted SNA2008 when Piketty and Zucman wrote their paper.

framework follows the international accounting guidelines set by the SNA2008 and presents one difference relative to PZ2014: the inclusion of natural capital (i.e. forestry land, mineral and energy resources) within the non-financial assets of the different institutional sectors. The detailed methods and concepts used at WID.world are explained in the DINA guidelines written by Alvaredo et al (2017).

In this note, I explain the updated series of these 8 countries, whose data now covers up to 2015, except for Australia and Canada, whose data are updated to 2016. In section II, I explain the conceptual changes between SNA93 and SNA2008 together with the treatment of natural capital at WID.world. In section III, I compare the values taken by the new series relative to the old ones, pointing out the main reasons for the observed differences (which are small in average). Finally, I explain the general procedure followed to splice the updated series with the historical data, including country specific notes.

II. Conceptual differences between old and new series at WID.world: the role of R&D and natural capital

Research and development. The international guidelines to produce national accounts were last revised in 2008 (SNA2008), replacing the previous vintage of 1993 (SNA93). The new updated wealth macro series for the 8 countries in PZ follow in their totality the SNA2008, whereas in PZ all data but the Australian were based in the SNA93. The structure and classification of financial assets “were virtually unchanged in the new system” (Alvaredo et al. 2017, pg. 42) but some changes are worth mentioning in the case of non-financial assets. In particular, three categories that were previously considered a intermediate consumption are now recognised as capital formation (investment) and, hence, capitalised as fixed assets²:

- (1) Research and development (AN.1171): before viewed as expenditure in intermediate non-durable goods, now is part of investment in intangible assets. In France, for example, in 2015 research and development (R&D) represents 2.9% of the stock of produced assets (AN.1).
- (2) Databases: They are part of the new category ‘Software and databases’ (AN.1173). Before SNA2008, only expenditure on software, and not on databases, was considered as investment. In France, for the year 2015, this category represents 1.8% of total produced assets, with databases representing around 20% of this category.
- (3) Weapons systems (AN.114): In SNA93, only the acquisition of military structures and equipment that were considered to have a civilian purpose were recorded as capital formation. In SNA2008, military weapons and supporting system with no civilian purpose are considered as capital assets. In France, AN.114 represents 0.4% of produced assets in 2015.

² A detailed analysis of the changes between SNA93 and SNA2008 can be found in Eurostat’s (2014) manual.

Conceptually, the recognition of the previous three categories as capital goods (and, especially, of R&D) should raise the value of the stock of non-financial assets in the new series. However, the magnitude is relatively small. Taking the example of France in 2015, the inclusion of these assets would represent around 3.5% of total produced assets or 2% of total non-financial assets (the sum of produced and non-produced assets)³. Of course, the inclusion of these assets would impact differently some institutional sectors, being more intense for corporations and the government and less so for households.

Natural capital. There are three big categories of natural resources according to the SNA: Land underlying buildings and structures (AN.2111), Land under cultivation (AN.2112) and Mineral and energy reserves (AN.212)⁴. Furthermore, Land under cultivation may be split into Agricultural land (AN.21121) and Forestry land (AN.21122). The sum of forestry land and mineral and energy resources is what is known as Natural capital in the DINA guidelines and which are implemented in the WID.world database (Alvaredo et al. 2017). Out of these categories, PZ included Land underlying buildings and structures and Agricultural land in their estimates of national wealth but accounted for natural capital as a memo item, excluded from their benchmark series of national wealth. Two important reasons to do so were the complexity to measure natural capital and the fact that only 4 out of the 8 countries in the sample reported estimates of these assets. However, WID.world intends to progressively account for them, in particular, due to the important role that these assets play in some developing countries. Hence, in the updated series of wealth, natural capital is included in the 4 countries that report their value: Australia, Canada, France and Japan (see table I).

	Piketty and Zucman (2014)	Updated series	Extrapolated from UNU-IHDP (2014)*
Australia	58,6%	57,4%	
Canada	77,1%	60,8%	
France	No data	0,1%	
Germany	No data	No data	16,0%
Italy	No data	No data	0,1%
Japan	0,3%	1,6%	
UK	No data	No data	0,6%
USA	No data	No data	10,3%

* These values correspond to mineral and energy resources, but not to all types of natural capital. In Australia and Canada, mineral and energy resources represent 99% and 88% of natural capital in 2010, respectively.

³ The official national balance sheets of France can be found in the following link: <https://www.insee.fr/fr/statistiques/2383685?sommaire=2383694#titre-bloc-41>

⁴ There exist other types of natural resources in the SNA (i.e. recreational land and associated surface water, other land and associated surface water, etc.) but their magnitude is relatively small within the very few countries that actually report their value. For example, in Germany, they represent 11.6 million of euros in 2011 or 0.4% of total national land (Schmalwasser and Brede (2015), table 1).

The inclusion of natural capital for some countries but not for others may generate a comparability problem if natural capital is a significant part of wealth in those countries not reporting their value⁵. For the 4 countries that do not report their value, we can check an alternative source on natural capital to evaluate the importance from this omission. According to the latest UNU-IHDP Inclusive Wealth Report (2014), the market value of non-renewable resources (which correspond to mineral and energy resources) are almost negligible in Italy and the UK. Only in Germany and the USA they take a significant value. For 2010, the latest year for which the UNU-IHDP reports estimates, we can compare the value of these same assets in Canada and Australia (the two countries where official accounts report a sizeable value for natural capital) with the estimates of this report⁶. In both cases, estimates from the official national accounts represent around one third of those in the report. Applying this same proportion to the values of Germany and USA in the UNU-IHDP report, we would get a value of mineral and energy resources equivalent to 16% and 10% of national income, respectively (last column, table I). Although not negligible, these values are far from being problematic, given that national wealth in this year was equal to 411% of national income in Germany and 416% in the USA. We recognise, however, the complexity of measuring natural resources, an area in which we expect to make progress in future updates of the WID.world database.

III. New results: differences between the old and the new series

In this section, we compare the main results of the updated series of macro wealth with the equivalent values in PZ. To do so, we calculate the average value for the 8 economies in PZ for four indicators: private wealth-national income ratio, public wealth-national income ratio, national wealth-national income ratio and the Tobin's 'equity' Q (an indicator tracking the discrepancy between corporations' book and market values). In all cases, the average values of these indicators correspond to an unweighted arithmetic average (i.e. the 8 countries' ratios are added and then divided by 8).

Before commenting on the results, a note of caution is needed. In the previous section, we examined the main conceptual difference between the estimates in PZ and these updates. However, differences between the new and the old series respond to numerous factors that are not only conceptual. In particular, national statisticians revise periodically their historical series: they use new data sources (i.e. on the price of assets), they change the parameters of their models (i.e. modifying the depreciation structure of assets when applying the Perpetual inventory method) or they account for new assets (i.e. new types of natural resources), to name just a few common adjustments. Hence, differences between the new and the old series cannot be uniquely explained by adopting the SNA2008 or by the inclusion of natural capital within non-financial assets.

Figures 1, 2, 3 and 4 compare the values in PZ and in the updated series between 1970 and 2015 in the four indicators commented previously: (1) private wealth-national income ratio, (2) public wealth-national income ratio, (3) national wealth-national income ratio

⁵ Note, however, that the value of these assets is indeed captured in all countries within the market value of equity of those sectors exploiting these assets.

⁶ In 2010, mineral and energy resources represent 99% and 88% of total natural capital in Australia and Canada, respectively.

and (4) Tobin's 'equity' Q (the latter is compared for the period 1990-2015, when data for all countries except Italy are available). In all cases, the evolution of the new series is very close to the old ones, with some small differences. Overall, the new series tend to converge with the old ones in the initial years (around 1970) and to diverge in the ending years (around 2010).

By 2010, the updated series of private wealth (figure 1) are higher than the old series in the equivalent of 18% of national income: the updated series equal 526% of national income vs 508% in PZ. For public wealth (figure 2), new series are higher than the old series in 2010 too, in the equivalent of 12% of national income: public wealth represents 21% of national income in the new series vs 9% in the old ones. Consequently, market-value national wealth (the sum of private and public net worth) is higher in the new series, in the equivalent of 30% of national income (figure 3): 547% of national income vs 517%. Regarding Tobin's 'equity' Q (figure 4), values are displayed for the period 1990-2015, years for which data are available in 7 of the 8 countries⁷. A ratio below one means that the market value of corporations is lower than their book value or, equivalently, that book-value national wealth is higher than the market value. Over this period, both series of Tobin's Q move together, with the updated series being slightly closer to unity than the old ones, meaning that market and book value measures are slightly closer in the new update.

IV. Splicing procedure and country specific notes

Official balance sheets are periodically revised but, frequently, the new versions do not cover the whole period for which official statistics have existed. For example, in Canada, the latest official update covers the period 1990-2016 but not the period 1970-1989, for which data had existed in previous editions. As a rule, I use the most recent official accounts and then reconstruct the historical series following the proportional evolution of the corresponding series in PZ. Regarding the specific concepts, sources and adjustments made to the data, in all cases I follow the work of PZ, which is explained in the appendix to their paper (Piketty and Zucman, 2014b) and in the corresponding country-specific excel files⁸. When an alternative procedure is followed, I point to it in this document.

In the next country-specific notes, I comment on the official statistics used in this update and the procedure to splice the new data with older series. Within every country, I explain in a different sub-section the splicing of the private, public and corporate sectors. Three additional sub-sections cover the estimation of three assets that were not covered in PZ: national housing (the sum of private, corporate and public housing)⁹, national agricultural land and natural capital.

Australia

⁷ Italy is not included in the average Tobin's 'equity' Q values because corporate wealth series are only available for the period 2006-2015.

⁸ <http://piketty.pse.ens.fr/en/capitalisback>

⁹ In PZ, only the value of private housing and private agricultural land were reported. In this update, I compute housing and agricultural land at the national level too.

Overview

Data for Australia in PZ covered the period 1960-2011. I have extended the series to 2012-2016 and revised the existing series for the period 1960-2011.

Explanation

The official balance sheets used by PZ already followed the SNA2008 and ended in 2011. In this update, I use the latest national accounts from the Australian Bureau of Statistics¹⁰, that cover the period 1990-2016, and splice these series with those of PZ for the preceding years. An important novelty with respect to PZ is the inclusion of natural capital in the new series. In addition, I estimate the total stock of national housing for the years 1960-1990.

Private wealth (figure 5): The private sector in Australia is not decomposed into households and NPISH: official statistics group together the two sectors into what we call the private sector in WID.world database. By 1990, the new series of private wealth are slightly higher than those in PZ: 402% of national income in the new series and 391% in the old ones. This is the result of higher financial wealth (financial assets net of liabilities). I extend the series of non-financial assets, financial assets and liabilities taking the first observation in the new series (1990) and using the growth rates in the equivalent series of PZ, up to 1978. Before 1978, only data on non-financial assets and net wealth are available and I follow the same procedure to extend backwards net wealth and non-financial assets. By 1970, the updated series of net private wealth are slightly higher than the old ones: 340% of national income vs 332% in PZ.

Public wealth (figure 6): By 1990, the updated series including natural capital are slightly lower than the equivalent series in PZ (including natural capital too): 103% of national income vs 108%. Before 1990, Piketty and Zucman (2014) do not separate financial wealth into financial assets and liabilities. Instead, they provide data for net financial wealth. Given that by 1990, the new series of financial assets and liabilities are almost equal to the old ones, I extend net financial wealth to 1960 using Piketty and Zucman without modification. For non-financial assets, I extend backwards the new series using the growth rates in PZ. By 1970, the updated series are slightly lower than the old ones: 80% of national income vs 84%.

Corporate wealth (figure 7): Corporate balance sheet is available since 1990 in PZ. This is the same year for which the corporate balance sheet is available in national accounts. Hence, I replace the existing series from PZ with the new data, which cover the period 1990-2016. The new Tobin's Q is higher than in PZ. This is mainly the result of the market-value of equity liabilities, which is significantly higher in the new series.

Housing (figure 8): In the updated series, I reconstruct national housing, which is the sum of housing owned by the private, corporate and public sectors. For the years 1990-2016, data are directly taken from the official balance sheets¹¹. Before 1990, PZ provide

¹⁰ <http://www.abs.gov.au/AUSSTATS/abs@.nsf/DetailsPage/5204.02015-16?OpenDocument>

¹¹ The Australian Bureau of Statistics reports the value of housing structures (dwellings, AN.111) but does not decompose land into different uses (i.e. land underlying dwellings, land underlying non-residential structures, agricultural land, etc.). However, for the private sector, the total value of housing (dwellings plus land underlying) is reported in the Reserve Bank of Australia's balance sheets accounts (<http://www.rba.gov.au/statistics/tables/>), which are fully consistent with ABS's (Piketty and Zucman (2014b), pg.139). Then, for the private sector, the value of land underlying

series of housing owned by the private sector (starting on 1960), but not by corporations and the government. To extend private housing, I use the first observation in the new national accounts (year 1990), and extend it backwards using the growth rates in PZ. Given that both series have a similar value in 1990 (231% of national income in the updated series vs 229% in the old ones), they have an almost identical value in the preceding years too. For corporations and the government, I make an assumption. I observe that corporate housing and government housing represent a relatively constant fraction of the value of the domestic stock of over the 1990-2016 period: 5% and 1% respectively. I then assume that this proportion was also constant for the period 1960-1989. Of course, this is approximative and if better data become available, we will correct their value.

Natural capital (figure 9): Official series of natural capital, both at the national and institutional sector level, are available for the period 1990-2016. Within natural capital, mineral and energy resource are the vast majority (around 99% of the total), the remaining being timber and spectrum assets. Before 1990, I extend their value using the growth rates in PZ. Natural capital in Australia is almost exclusively owned by the government (around 99.8% of the total stock) and has experienced a dramatic rise since the 2000s. The updated series are very close to the old series during the last years of the sample (2008-2011), but they are significantly lower in the preceding years.

Agricultural land: The ABS national accounts do not differentiate agricultural land from other types of land. Hence, we do not account separately for agricultural land in WID.world series.

Canada

Overview

Data for Canada in PZ covered the period 1970-2011. I have extended the series to 2012-2016 and revised the existing series for the period 1970-2011.

Explanation

PZ used the National Balance Sheets statistics from Statistics Canada (Statcan), which covered the period 1970-2011 and followed the SNA93. Since then, Statcan has revised these accounts to match the SNA2008, and now cover the period 1990-2016. One important novelty of the new series is to allocate natural capital across the different institutional sectors (before, natural capital was a satellite variable in the national balance sheet of Canada, but was excluded from the sector accounts). In this update, I replace the series of PZ with the new accounts from Statistics Canada and extend backwards the new series to 1970. I also introduce two adjustments. Firstly, I account for agricultural land at the sector level (in PZ, agricultural land was part of their measure of built-up land, so the latter is slightly overestimated: see subsection 'agricultural land' below). Secondly, I estimate corporate and public housing, so I can compute national housing (the sum of private, public and corporate housing). Some of the explanations for the differences between the new and the old series are based on the raw balance sheets used by PZ.

dwelling is obtained as a residual from total housing in RBA minus dwellings in ABS. For corporations and the government, the same ratio land-dwellings is assumed to obtain the total value of housing.

The interested reader can find these data in the excel file “Wealth_1970_Today” in PZ’s directory for Canada¹².

Personal wealth (figure 10): The national accounts used by PZ did not report data for non-profit institutions serving households. Instead, only data for “Persons, and incorporated business” (the equivalent to the households sector in the SNA2008) were available. In the updated national accounts, however, data are reported for both households and NPISH, separately. I use the new data of the personal sector (households) for the years 1990-2016, and extend this sector backwards to 1970 using the growth rates in PZ2014. By 1990, the updated series of personal wealth are slightly below the old ones: 292% of national income and 301%, respectively. In this update, agricultural land is differentiated within non-financial assets (before it was not).

Non-profit institutions: Net wealth of non-profit institutions is a small but growing proportion of national income: from 0.8% in 1990 to 6% in 2016. Given that these data were not reported in PZ, I cannot extend backwards these series using those of PZ214a. Hence, I assume that net worth of non-profit institutions was constant and equal to 0.8% of national income over the preceding years (1970-1989). The goal of doing this extension is to complete the private wealth series, which are the sum of the personal and the non-profit sectors, but not to provide precise estimates of NPISH over the 1970-1990 years. We advise not to use the data of NPISH separately from the private sector before 1990.

Public wealth (figure 11): Contrary to balance sheets employed by PZ, the updated national accounts for the government include natural capital within non-financial assets. Surprisingly, by 1991 net public wealth in the new series is below net wealth in PZ (-36% of national income and -28%, respectively), even though public natural capital equals 9% of national income in this year. This difference is largely explained by non-residential structures, which are worth 25% of national income in the updated series and 40% in the old ones. On the contrary, other types of non-financial assets, financial assets and liabilities have very similar values in the two sets of national accounts. To extend the updated series of public wealth backwards to 1970 I proceed as follows. For financial assets and liabilities, I follow the standard procedure (take the first observation in the new series and extend it backwards with the growth rates of the equivalents in PZ). For non-financial assets, I follow the same procedure but, in this case, I extend non-financial assets net of natural capital with the growth rates of total non-financial assets in PZ2014 (which do not include natural capital). To obtain total non-financial assets according to the new series’ definition, in a second step I add public natural capital (see subsection “natural capital” below).

Corporate wealth (figure 12): Like in the case of the public sector, the latest national accounts incorporate natural capital within corporate non-financial assets, while the accounts used by PZ did not. Surprisingly too, by 1991 net corporate wealth (corporate book minus market value) is lower in the new series (58% of national income vs 64%), even with natural capital representing 17% of national income. Like the public sector, the main reason for this is the higher value of non-residential structures and machinery in the old series: 118% of national income in the old accounts and only 81% in the updated ones. This large difference is slightly compensated by higher net financial wealth in the updated series, in which the value of financial assets net of liabilities equals -107% of national income for -117% in the old series. To extend the new series, I follow the same procedure than in the public sector. Financial assets and liabilities are extended with the

¹² <http://piketty.pse.ens.fr/files/capitalisback/CountryData/Canada/>

growth rates of the equivalent series in PZ. For non-financial assets, I extend corporate non-financial assets net of natural capital. Then, I add natural capital to obtain total non-financial assets as defined in the updated series.

Housing (figure 13): In the updated series I reconstruct national housing, which is the sum of housing owned by the private, corporate and public sectors. For the years 1990-2016, data for the three sectors are based on the latest official balance sheets. For every sector, I follow the same procedure than PZ for households: (1) decompose built-up land into 'land underlying dwellings' and 'land underlying other buildings and structures'; (2) add land underlying dwellings to dwellings to obtain total housing (land plus structure). Decomposing land into types is necessary because the Canadian accounts do not decompose the variable 'land' into different uses. However, PZ treated the variable 'land' in the Canadian accounts as 'built-up land', when it also includes agricultural land. Hence, before splitting built-up land, firstly I subtract an estimated value for agricultural land. To calculate housing for the period 1970-1990, I follow the same system: subtract agricultural land, splice built-up land, add land underlying dwellings to dwellings. The data for this period are the sector balance sheets used by PZ, spliced with the new accounts with standard procedure: extending the first observation available in the new series (1991) with the growth rates in the equivalent data in the previous national accounts.

Natural capital (figure 14): In the national accounts used by PZ, natural capital (variable "natural resources" in the Canadian nomenclature, which include timber, mineral and energy resources) was not incorporated in the sector accounts, but only in the national balance sheet. Since then, Statcan has incorporated this variable into the non-financial assets of the institutional sectors¹³, with series available for the period 1990-2016. Even though natural resources are legally owned by the public sector, Statcan splits them between corporations and the government according to the flow of royalties and profits obtained from the exploitation of these resources (Kazi, 2017). To extend backwards natural resources I follow a twofold approach. Firstly, I extend the total value of natural resources back to 1967. To do so, I use the series of natural resources from Statcan's Natural Resource Asset Account¹⁴. These series are not completely updated, reason why they show some discrepancies with the new series, especially during the 2000s. Still, they are relatively closer to the updated series than those used by PZ. Secondly, I split the total value of natural capital between corporations and the government according to the proportion observed during the period 1990-2016: 25% of natural capital 'owned' by the government, 75% by corporations. This proportion has been relatively stable during the years 1990-2016 (corporations between 70-80% of the total, the government between 20-30%) but, nonetheless, it should be taken as a rough approximation in the absence of specific data to carry this division.

Agricultural land (figure 15): As explained above, sector balance sheets accounts include a variable named 'land', which includes built-up land and agricultural land. Hence, a decomposition between the two types is necessary before splitting built-up land into underlying dwellings and underlying other buildings and constructions. I take the

¹³ Technically, Statcan treats natural resources of institutional sectors as intangible non-financial assets which, at the national level, add up as tangible assets. For a deep discussion of the treatment of natural resources in Statcan, see the following link: <https://www.statcan.gc.ca/pub/13-605-x/2015009/article/14239-eng.htm>

¹⁴ <http://www5.statcan.gc.ca/cansim/a26?lang=eng&id=1530121&p2=33>

value of national agricultural land from the balance sheet of the agricultural sector¹⁵, which covers the period 1981-2016. Then, I extend the series backwards to 1970 using the growth rate in the equivalent series of PZ. However, these series are not decomposed across sectors. As a rough approximation, I consider that 65% is owned by households and 35% by corporations, in line with the values observed in other advanced countries (see, for example, figures 21 and 27 for France and Germany). Overall, the magnitude of agricultural land is relatively small (between 12% and 24% of national income over the period 1990-2016).

France

Overview

Official balance sheet data for France in PZ covered the period 1970-2010. In addition, they present annual series of private, public and national wealth since 1870. I have extended the series to 2011-2015 and revised the existing series for the previous period.

Explanation

Current wealth macro data at WID.world comes from Piketty and Zucman (2014). These data end in 2010 and follow SNA93. Garbinti, Goupille and Piketty (2017) ('GGP2017' from now on) updated these series up to 2014 using more recent data from INSEE, which adopt the latest SNA2008 guidelines. In this update, I follow the latter paper and use the most recent data from INSEE, which covers the period 1978-2015. In this update, I separate natural capital from other natural resources (built-up land and agricultural land).

Private wealth (figure 16): Both the raw series used by PZ and the latest updates of the national accounts report data separately for the personal and the NPISH sectors. I reconstruct separately the evolution of the two sectors for the period 1970-2015, and add them to obtain the private sector. INSEE's accounts report data for non-financial assets for the period 1979-2015. For financial assets and liabilities, data cover the years 1996-2015. In both cases, I use the latest INSEE's data for the available years and extend it backwards to 1970 using the series of GGP2017. Given that the series used by GGP2017 coincide with the latest INSEE accounts in the earlier years (1980s-1990s) and only slightly differ in the last years, no splicing procedure is needed. For the period 1870-1969, I take the data directly from GGP2017, which present annual series of net private wealth not differentiated into different subcomponents¹⁶.

Corporate wealth (figure 17): Data for the balance sheet of corporations in PZ were available for the period 1970-2010. In GGP2017, these are available for the period 1970-2014. I follow the same procedure than for the private sector during the period 1970-2015: use the latest national accounts covering non-financial assets for the period 1979-2015 and financial wealth for the period 1996-2015, and extend them backwards to 1970 using the data in GGP2017.

Public wealth (figure 18): For the period 1970-2015, I follow the same procedure as in the private and the corporate sector cases. For the period 1870-1969, I take the data on

¹⁵

<http://www5.statcan.gc.ca/cansim/a26?lang=eng&retrLang=eng&id=0020020&&pattern=&stByVal=1&p1=1&p2=-1&tabMode=dataTable&csid=>

¹⁶ This is due to the estimation procedure in the original paper by PZ. Data on the balance sheet of households were only available for certain years throughout this period, which are then joint with accumulation equations of private savings and capital gains.

non-financial assets, financial assets and liabilities from PZ, without further modification (no splicing procedure is needed given that both the updated and the PZ series are equal by 1970).

Housing (figure 19): In the updated series, I reconstruct national housing, which is the sum of housing owned by the private, corporate and public sectors. For the years 1979-2015, data for the three sectors are based on the latest official balance sheets from INSEE. As in other countries, INSEE reports data on the value of dwellings (AN.111) but does not separate the variable “Land underlying constructions and civil works” (AN.2111) into different types. I follow the approach of PZ for calculating private housing, and decompose AN.2111 in proportion to the corresponding fixed assets: Dwellings (AN.111), Non-residential buildings (AN.1121) and Civil works (AN.1122). For the period 1970-1978, only data on private housing (as the sum of land plus structure) is available, both in PZ and in GGP2017. Unfortunately, data on housing, as a separate component, within corporations and the public sector’s non-financial assets are not available. As a proxy of the evolution of housing in these two sectors, I use the percentage of ‘social housing’ renters within all households in France, from the French Housing Survey¹⁷. I observe that in the years 1979-2013, the evolution of corporate plus publicly owned housing as a percentage of national housing follows relatively close the evolution of the percentage of households that are social renters. Hence, I assume that public and corporate housing moved proportionally to the percentage of social renters during the 1970-1978 period too (figure 20). To split the sum of corporate and public housing into these two sectors, I keep constant the proportions observed in 1979: 93% owned by corporations, 7% owned by the government.

Natural capital: INSEE accounts report the value of mineral and energy reserves (AN.212) within their non-produced assets. In PZ and in GPP2017, these assets are included within their measure of non-financial assets but are not reported as a separate category. In this update, I separate this category for the years in which INSEE reports on their value: 1979-2015. Ideally, we would like to account for forestry land too within natural capital, but the variable land under cultivation (AN.2112) is not split into agricultural and forestry by INSEE. Hence, as in other countries, we treat cultivated land as agricultural land at WID.world. Overall, the value of mineral and energy reserves is very small: between 1.1% and 0.1% of national income over the 1979-2015 years. I do not extend this variable backwards from 1979 given the absence of data sources.

Agricultural land (figure 21): PZ reported data for households agricultural land for the years 1970-2010, but not for other sectors. GPP2017 already included corporate holdings of agricultural land for the period 1979-2014 (corporations are the only sector, in addition to households, owning agricultural land according to INSEE’s balance sheets). I update these series to the year 2015 and extend them backwards to 1970. For the period 1979-2015, I take data for “Land under cultivation” (AN.2112) from the latest national accounts. As in other countries, this variable adds both agricultural and forestry land (see “Natural capital” sub-section above). This is the same procedure followed by

¹⁷ Between 1970 and 2013, there have been 10 editions of the French Housing Survey: 1970, 1973, 1978, 1984, 1988, 1992, 1996, 2002, 2006 and 2013. Between 1970 and 2006, I define social renting as renters of “HLM” dwellings (“Habitation à loyer modéré” in French). For the year 2013, the definition changes slightly: renters of “HLM and of other social housing” (but social housing different from HLM is almost negligible in France). For the years between 1970 and 2006, data can be found in the following link: <https://www.data.gouv.fr/fr/datasets/les-menages-et-leur-logement-depuis-1955-et-1970-quelques-resultats-extraits-des-enquetes-logement/> The year 2013 can be found here: <https://www.insee.fr/fr/statistiques/1912703?sommaire=1912749>

PZ and GGP2017. For the period 1970-1978, I extend the series of households agricultural land using the growth rates of the equivalent series in PZ. Given the absence of data for corporations over these years, I extend corporate agricultural land using the same growth rates than in the case of households.

Germany

Overview

Official balance sheets for Germany in PZ cover the period 1991-2011. In addition, they present annual series of private, public and national wealth since 1870 (and for corporate wealth since 1971). I have extended the series to 2012-2016 and revised the existing series for the previous years.

Explanation

Current wealth macro data at WID.world comes from Piketty and Zucman (2014). These data end in 2011 and follow SNA93. In this update I use the most recent national accounts from Destatis and the Bundesbank (2017 edition), which follow SNA2008 and cover the period 1999-2016¹⁸. I splice these data with the annual series presented in PZ since 1870¹⁹. In addition, I estimate national housing (as the sum of private, corporate and public housing) since 1970 and national agricultural land since 1989 (in PZ these two variables were available for the private sector alone, since 1950 and 1989 respectively). Data for natural capital are not available in German national accounts.

Private wealth (figure 22): Official balance sheets in Germany group together households and NPISH (sectors S14 and S15) and cover the period 1999-2016 in the latest update. For financial assets and liabilities, I follow PZ and use data directly from the Financial Accounts of Bundesbank, which decompose financial assets and liabilities into more categories than Destatis²⁰. Non-financial assets come directly from the Destatis' accounts. By 1999, the new series of private wealth are significantly higher than

¹⁸ Destatis (the Federal Statistical Office of Germany) publishes the official balance sheets by institutional sector in Germany. The latest accounts cover the period 1999-2016, while those used in PZ covered the period 1991-2011 (2012 edition). Non-financial assets are direct estimates from Destatis while financial assets and liabilities are based on the Financial Accounts from Bundesbank. One difference with respect to the financial data reported in Bundesbank is that Destatis consolidates financial assets and liabilities at the institutional sector while Bundesbank's data are unconsolidated (Destatis (2017), pg. 5). This was also the case with the accounts used by PZ. This is why some discrepancies may arise when comparing gross financial assets and liabilities between the two sources. Data from Destatis and the Bundesbank can be found in the following two links:

https://www.destatis.de/EN/Publications/Specialized/Nationalaccounts/BalanceSheetPDF_5816104.html

https://www.bundesbank.de/Navigation/EN/Statistics/Time_series_databases/Macroeconomic_accounting_systems/macroeconomic_accounting_systems_node.html

¹⁹ PZ use estimates of contemporaneous authors, economic historians and older versions of official accounts (both from Destatis and the Bundesbank) to extend their annual series back to 1870. They complement these sources with accumulation equations to splice different available years.

²⁰ For other sectors (corporations and the government) I will use data on financial assets and liabilities from Destatis and not from the Bundesbank. Given that the financial counterpart of households are other institutional sectors, the fact that Bundesbank's data are not consolidated does not generate a problem: unconsolidated and consolidated data within the private sector are identical.

those in PZ: private wealth equals 376% of national income in the new series and 347% in the old ones. This is due to the higher value of two categories of non-financial assets: business assets different from housing and built-up land²¹. Other types of assets and liabilities are almost identical in the new and the old series by 1999. I then splice the new series of assets and liabilities with the equivalent ones in PZ to extend backwards the data to 1991 (which is the first year of official balance sheets in PZ). Private wealth is then calculated as the sum of the different asset subcomponents, net of liabilities. The splicing procedure is the standard: extend the new series with the growth rates of the equivalent series in PZ.

Before 1990, PZ report data for the household sector only (i.e. not including NPISH). Between 1950 and 1989, they use older versions of Bundesbank's Financial Accounts to account for households financial assets and liabilities. For non-financial assets, they rely on the estimates from Baron (1988), which present data for some given years (1953, 1957, 1960, 1963, 1966, 1972, 1974, 1977 and 1988), which PZ interpolate linearly in between. For financial assets and liabilities differences between the new and the old series are negligible. However, the new series of non-financial assets are higher than the old series for the period 1991-2011. I then upgrade the point estimates of Baron by the observed discrepancy. By 1950, private wealth equals 205% of national income in the new series and 184% in the old version.

For the period 1870-1949, PZ present an annual series of private wealth, which is not decomposed into further categories. This is due to using accumulation equations to splice some year estimates for which they know the balance sheet of households. I use their series of private wealth without further modification for the period 1870-1946, and splice the new series with those in PZ between 1946-1950²². Although this splicing is not totally correct, I prefer not to upgrade the previous historical period. In particular, due to the great uncertainty surrounding the stock and value of assets and liabilities during World War II. Overall, differences between the old and the updated series are small so this decision has no significant effect on the long-run development of the series.

Public wealth (figure 23): The procedure to extend and splice public wealth series is the same than in the private sector: use the latest national accounts for 1999-2016²³, extend them with the growth rates in PZ's series for the period 1950-1990, splice the updated series with those in PZ for 1946-1950 (so both converge by 1946), and take, without modification, the annual series for the years 1870-1946. The only difference stems from the fact that PZ provide annual series of non-financial assets, financial assets and liabilities for the period 1870-1949, and not only of net wealth (as it is the case in the private sector).

For the period 1950-2011, the new series are slightly higher than the old ones: in 1950, the updated series are 58% of national income vs 43% in the old series; in 1999 (first year available in the new official balance sheets), the new series are 39% of national income vs 22% in the old ones. This is mostly due to higher non-financial assets, which

²¹ PZ explain in their appendix (pg. 72) that land underlying buildings and structures may be downward biased due to the absence of a real census-like estimate. This has been improved in the latest editions of the balance sheets (see subsection: Housing). This can explain the higher values of built-up land in the new official balance sheets.

²² I add a fixed capital gain of 4% to the series of PZ between 19446 and 1950, so their series match the updated ones by 1950.

²³ For the public sector, financial data are taken from Destatis' balance sheets and not from Bundesbank's Financial Accounts (the former take the data from the latter but present them already consolidated at the sector level).

in the new series represent 77% of national income in 1999 and 62% in the same year of PZ. Financial assets and liabilities, on the contrary, are almost equal.

Corporate wealth (figure 24): I take directly the new data on corporate wealth from Destatis national accounts for the years 1999-2016. I then splice these series with those in PZ backwards to 1971 (first year available in PZ). The splicing procedure is the standard: use the new estimates and extend them with the growth rates of the equivalent data in PZ.

The updated series of net corporate wealth (net worth minus market-value of equity) are lower than those reported in PZ. However, those in PZ contained a mistake in one formula: land underlying buildings and structures took the data of households and NPISH and not of corporations. If I compare the new series with the corrected version in PZ, then net wealth of corporations is higher than before. As in the case of the private and the public sectors, this is mostly the result of higher non-financial assets (financial assets are also slightly higher, but they are compensated by higher non-equity liabilities too). Overall, the Tobin's 'equity' Q follows a similar trend in the three series, with some difference in the levels.

Housing (figure 25): PZ present series of private housing for the period 1950-2011 but do not separate housing assets within the non-financial assets of corporations and the government. In this update I present data on national housing (the sum of housing owned by private, corporate and public sectors) for the period 1970-2016, in addition to revising the private housing series of PZ for the years 1950-2011. For the period 1990-2011, PZ use the official balance sheets from Destatis, which provide data on the value of dwellings and of land underlying dwellings for the three institutional sectors²⁴. Then they splice the private housing series with the series of housing owned by households from Baron (1999), which provides estimates for certain years within 1950 and 1980.

In this update, I use Destatis' balance sheets for the period 1999-2016, which report the value of housing for the three sectors. One novelty of these national accounts with respect to those used by PZ is the improved treatment of land underlying buildings (including land underlying dwellings). As PZ explain in page 72 of their appendix, estimates of land underlying buildings from Destatis could be biased as the valuation is based on prices of new land for building development. These estimates were produced by the Bundesbank and were incorporated by Destatis into their balance sheets. However, Destatis now produces their own estimates of land underlying dwellings which are based on series of prices for already built land. Overall, both series follow a similar trend with the new ones having a higher value than the old ones (i.e. by 1999, the new series of national land underlying dwellings are worth 78% of national income, while it was 58% in the old ones).

By 1999, the new series of private housing are equal to 218% of national income, while they were equal to 200% in PZ. I extend backwards to 1990, separately, dwellings and of land underlying dwellings, for each sector, using the equivalent variables in PZ. Then, for private housing, I splice the new series with those of Baron (the series of Baron correspond to the total value of households housing, and are not decomposed into land and structure). Similar to what I do with other components of private wealth, I upgrade

²⁴ As it is the case in other countries, the German balance sheets do not decompose land underlying buildings and structures (AN.2111) into land underlying dwellings (AN.2111A) and land underlying other buildings and structures (AN.2111B). Following PZ and DINA guidelines, I split AN.2111 into the two types, in the same proportions than corresponding categories of produced assets: dwellings (AN.111) and other buildings and structures (AN.112).

the series of Baron with the discrepancy observed between the new and the old series in 1990 (first year for which PZ report data on housing from the modern national accounts) (figure 26). For corporations and the government, series for dwellings are available in PZ since 1970. I splice these series with the new updated series in 1999 using the standard procedure (extending the updated series with the growth rates in the equivalent ones in PZ). Then I follow PZ and assume that the evolution of land underlying dwellings follows that of dwellings (i.e. the growth rates of the two series over 1970-1999 are equal). This assumption is done to approximate the total value of housing in Germany (as the sum of private, corporate and public housing) and implies fixing the ratio land-structure during the period 1970-1989 taking 1990 as reference. Given the predominant role played by the household sector in housing, the margin of error is limited when looking at the total value of housing in Germany (which is the goal in these estimates). However, if more specific data on the value of land underlying dwellings becomes available, we will correct these numbers.

Agricultural land (figure 27): In the 2012 edition of Destatis national accounts used by PZ, only data on land underlying buildings and structures (AN.2111) were reported, but not on other types of land: cultivated land (AN.2112), recreational land and associated surface water (AN.2113) and other land and associated surface water (AN.2119). Hence, to correct for these missing data, PZ estimated agricultural land by assuming a ratio of land to cultivated assets of 9 (cultivated assets are part of produced assets and are available in the official balance sheets accounts). The latest balance sheets from Destatis, however, do report the value of total land (AN.211) but only reports in a differentiated manner one of the subcomponents: land underlying buildings and structures. This implies that the residual from total land minus land underlying buildings and structures includes cultivated land but also other types. However, in a note from Destatis (see Brede, S. & Schmalwasser, O. (2015)), land is decomposed into lower categories for two single years: 2011 and 2012 (table 1). It shows that within land different from built-up land, cultivated land (“Landwirtschafts/Waldfläche”) accounts for the vast part. For example, in 2011, cultivated land equals 379.2 million euros, while other types of land (“Flächen anderer Nutzung”) equals 11.6. In other words, in these two years, the role played by land different from built-up and cultivated is negligible. I then assume that the residual of land net of built-up land only captures cultivated land over the 1999-2016 years. Overall, these new data imply two changes: (1) The government sector owns cultivated land (in PZ public cultivated assets have zero value, therefore public cultivated land too); (2) agricultural land is higher in the new series than in those in PZ.

I extend backwards these series to 1989, using the evolution of cultivated assets in PZ, for each institutional sector. The splicing procedure is the standard: extend the updated series using the growth rates of the series for cultivated assets in PZ. Given that the public sector has no cultivated assets, I assume that they follow the trend of the corporate sector.

Natural capital: According to Destatis (2017, pg. 4), natural capital other than land is not estimated.

Italy

Overview

PZ presented series of private and public wealth in Italy for the periods 1966-2011 and 1960-2011, respectively. Not for corporations. In this update I extend these series to 2012-2015 and revise the existing series of PZ. I also estimate corporations wealth for 2006-2015, using the recently published non-financial accounts of Italy.

Explanation

At the time of the work of PZ, Italy did not publish official non-financial stock accounts for the institutional sectors. The only exception were households, for which the Bank of Italy did publish its full balance sheet for the period 1995-2011. Contrary to non-financial assets, the Bank of Italy had an already long tradition publishing the Financial Accounts of Italy, including a comprehensive decomposition for all institutional sector, and with annual estimates starting in 1950. For the private sector, PZ relied on these data, which they complemented with the estimates of households' non-financial assets for the period 1966-1995 in Brandolini et al. (2007)²⁵. For the government sector, financial information came from Bank of Italy's Financial Accounts. For non-financial assets, their estimates were based on a paper by Istat (2011), which computes government non-financial assets for 2006, 2007 and 2008, and which PZ extrapolated for the preceding years (see Piketty and Zucman (2014b), pg. 127 and 128). All data used by PZ followed the SNA93.

In 2015, ISTAT (the Italian National Institute of Statistics) published, for the first time, non-financial accounts for institutional sectors in Italy, which follow SNA2008. These accounts cover the period 2005-2015, except for housing and cultivated land, which series start in 2001²⁶. The Italian Financial Accounts continued being published by the Bank of Italy, and at the present follow SNA2008 too. These accounts cover the period 1995-2016 in its most recent edition, but historical accounts exist for the 1950-1994 years²⁷. I then use these series to compute private, corporate and public wealth over the period 2005-2015. Then I follow PZ to reconstruct private and public wealth for the preceding years (with data starting in 1966 and 1960 respectively). In addition, I present an estimate of national housing and national agricultural land, based on the sum of the

²⁵ Over the period 1966-2011, Bank of Italy's Financial accounts referred to the private sector (households plus NPISH), while the non-financial data did not include NPISH. However, given the low net holdings of NPISH, PZ did not consider necessary to correct this discrepancy (Piketty and Zucman (2014b), pg. 127).

²⁶ The following ISTAT's report from 2015 briefly introduces these accounts: https://www.istat.it/en/files/2015/05/EN_non-financial_assets_2005-2013.pdf?title=Non-financial+assets+by+institutional+sector+-+27+May+2015+-+Full+text.pdf

²⁷ The most recent Financial Accounts can be found in the following link:

https://infostat.bancaditalia.it/inquiry/lite/mobile/en/ig#/P2NvbnRleHQ9dGF4byZzZWN0aW9uP_Wxpc3QmcGF0aD1beyJpljoiQkFOS0lUQUxJQTpESUZGOkNVQkU6UFVCQkxfMDAsQ1VCRVNFVCxUQUVhPLHxQVUJCTF8wMCIslInQiOiJUub3BpY3MifSx7ImkiOiJCQU5LSVRBTEIBOkRJRkY6Q1VCRTPQVUJCTF8wMF8wMl8wMV8wNixDVUJFU0VULFRBWE8sfFBVQkJMxZAwwfFBVQkJMxZAwwXzAyXzAxXzA2liwidCI6IkZpbmFuY2lhbCBBY2NvdW50cyJ9XQ%253D%253D

The historical series, in the following one:

https://infostat.bancaditalia.it/inquiry/lite/mobile/en/ig#/P2NvbnRleHQ9dGF4byZzZWN0aW9uP_Wxpc3QmcGF0aD1beyJpljoiQkFOS0lUQUxJQTpESUZGOkNVQkU6UFVCQkxfMDAsQ1VCRVNFVCxUQUVhPLHxQVUJCTF8wMCIslInQiOiJUub3BpY3MifSx7ImkiOiJCQU5LSVRBTEIBOkRJRkY6Q1VCRTPQVUJCTF8wMF8wMl8wMV8wNixDVUJFU0VULFRBWE8sfFBVQkJMxZAwwfFBVQkJMxZAwwXzA0liwidCI6Ikhhc3RvcmljYWwgdGFibGVzIC0gTW9uZXRhcnckgYW5kiIGZpbmFuY2lhbCBpbmRpY2F0b3JzIn0seyJpljoiQkFOS0lUQUxJQTpESUZGOkNVQkU6UFVCQkxfMDAsQ1VCRVNFVCxUQUVhPLHxQVUJCTF8wMHxQVUJCTF8wMF8wNHxQVUJCTF8wMF8wNF8wMV8wMyIsInQiOiJGaW5hbmNpYWwgQWVudHMgKDE5NTAtMTk5NCKifV0%253D

holdings of the private, corporate and public sectors. Natural capital is not reported by ISTAT's accounts.

Private wealth (figure 28): For the period 2005-2015, I take the data on non-financial assets of the private sector (households plus NPISH) directly from ISTAT's non-financial accounts (March of 2017 edition). Data for financial assets and liabilities come (for the same sector: Households plus NPISH) from the Bank of Italy's Financial Accounts (available for the period 1995-2016). I extend the series of housing, business assets and agricultural land backwards to 1995, using the growth rates of the equivalent series of non-financial assets from the Bank of Italy's Supplements to the Statistical Bulletin of 2014²⁸. Note that these series of non-financial assets of Bank of Italy only include households. But I extend the series of the private sector with the growth rates of households. If I were to obtain NPISH's wealth as a residual from ISTAT's private sector and Bank of Italy's households one, I get that NPISH account for about 6% of total private wealth, or the equivalent to around 27% of national income. However, I

Before 1995, I extend the updated series with the growth rates of the equivalent asset categories in PZ. Recall that PZ's data are based on the Historical Financial Accounts from the Bank of Italy and on the work of Brandolini et al. (2007) (the latter for the case of non-financial assets, the former for financial assets and liabilities). For financial assets I extend three series for which data are available: Equity and fund shares, Pension funds and life insurance, and other financial assets. I then extend liabilities and three types of non-financial assets: housing, business assets and agricultural land. In all cases I follow the standard procedure: extend the updated series with the growth rates of those in PZ.

Overall, the new private series are slightly higher than those in PZ throughout the 1966-2005, with differences being more significant from 2005 onwards. The main reason are higher non-financial assets in the new series, particularly housing.

Public wealth (figure 29): In this update I report series of government wealth for the period 1960-2015. For 2005-2015, non-financial assets are taken directly from ISTAT's non-financial accounts. For the preceding years, official data do not exist. Given the relative stability of the value of public non-financial assets over the period 2005-2015, around 36% of national income, I assume that the value of these assets was equal to this percentage of national income over the 1960-2005 period too. This is below the previous assumption in PZ's: 52% of national income (see subsection 'Explanation'). The stability of the value of non-financial assets may be justified by the evolution of public investment in Italy (Piketty and Zucman (2014b), pgs. 127 and 128), but the levels seem a bit low relative to the evolution in similar countries. In the absence of better data, this value should be understood as our best guess and will be revised if new data become available.

Financial assets and liabilities are taken from the official Financial Accounts for the period 1995-2015. I then extend these series backwards to 1960 using the growth rates of the equivalent ones in PZ (which are taken from the Historical Financial Accounts of the Bank of Italy). Overall, the updated series of public wealth are lower than those in PZ (between the equivalent to 10-20% of national income). The main reason are the lower non-financial assets which are slightly compensated by higher financial assets in the updated series.

²⁸ <https://www.bancaditalia.it/pubblicazioni/ricchezza-famiglie-italiane/index.html?com.dotmarketing.htmlpage.language=1>

Corporate wealth (figure 30): In PZ, corporate wealth was not covered due to the absence of non-financial assets data. The ISTAT non-financial accounts (which were not published yet at the time that PZ wrote their article), cover all institutional, for the period 2005-2015. In addition, Bank of Italy's Financial Accounts report corporations financial balance sheets for the period 1995-2016. In this update I present corporations wealth series between 2005 and 2015, years in which the two data sources overlap.

Housing (figure 31): In this update I present series of national housing (as the sum of private, corporate and public housing) for the period 1966-2015. For the period 2001-2015, data for all sectors are directly available at ISTAT's balance sheets²⁹. Before 2005, the extension is as follows. For the private sector, I extend the series of private housing with the growth rates of housing owned by households in the Bank of Italy's Supplement to the Statistical Bulletin (2015) for the years 1995-2005. For the period 1966-1995, I use the series from PZ, which are based on Brandolini et al. (2007).

To account for housing owned by corporations and the government, I need to make a series of approximations. Firstly, I observe their share on national housing for the years for which official ISTAT accounts are available (2001-2015). Over these years, corporate and public housing represented a relatively constant share of national housing: around 8% and 2%, respectively. Then, I observe the evolution of the tenure structure in Italy (figure 32), to track if there exist important changes that could alter the proportion of private housing in the total stock of dwellings. The idea is to look at the evolution of owner-occupied and privately rented dwellings relative to other types of tenures: social housing and the category 'others'. According to SNA, privately owned and owner-occupied dwelling are owned by the households sector, while social housing and other types of dwellings are typically owned by corporations and the government.

Data on renting, differentiated into private and social, are only available since 1981. Before, only total renting is reported. Over the 1981-2011 years, owner-occupied and privately rented dwellings represent around 87-89% of total stock of dwellings in Italy. If the proportion of social housing before 1981 remained relatively similar to the proportions observed in the 1980s (around 5% of the total), then private housing will continue representing around 88-89% of the total. In light of this plausible stability of the share of private housing on the total stock of dwellings, I assume that corporate and public housing represented the same proportions into national housing than those observed in the 2001-2015 period: 8% and 2% respectively. Of course, this is a rough estimate. However, note that the idea of this exercise is to approximate national housing and not, specifically, the share owned by corporations and the government individually and we will correct these estimates if better data become available. Nevertheless, changes to national housing should be of minor importance given that the vast majority of this stock should be owned by households, which in principle are correctly captured in our series.

Agricultural land: I report values for national agricultural land (as the sum of the holdings of the private, corporate and public sector) for the period 2002-2015. In addition, for the private sector, series are extended back to 1966, the same year in which data for private agricultural land are reported in PZ. For the period 2002-2015, data are taken directly from ISTAT's non-financial accounts, which includes the variable "cultivated land" for all institutional sectors. Before 2002, the procedure to estimate private agricultural land is the same than for private housing: between 1995 and 2001, use the series of households' non-financial assets from the Bank of Italy (2015) Supplement to

²⁹ ISTAT's accounts do not decompose the total value of housing into dwellings and land underlying dwellings.

the Statistical Bulletin; for the period 1966-1994, use the equivalent series in PZ. The splicing procedure is the standard: extend the updated series with the growth rates of the equivalent ones. Note that, by definition, “cultivated land” in national accounts includes forestry land in addition to agricultural land.

Natural capital: In Italy, natural capital is not covered by the non-financial accounts of ISTAT. However, according to the latest UNU-IHDP Inclusive Wealth Report (2014), natural capital has a negligible value in Italy.

Japan

Overview

The latest official balance sheets for Japan used by PZ covered the period 2001-2010. They spliced these data with previous editions of national accounts to present annual estimates of private, public, corporate and national wealth since 1970. I have extended their series to 2011-2015 and revised the existing series for the previous period.

Explanation

PZ used the 2010 edition of Japan’s National Accounts from the Cabinet Office, that covered the period 2001-2010 and followed the SNA93 (with 2005 as benchmark year). These national accounts report the balance sheets of institutional sectors (including the separation of the private sector into households and NPISH) and offer a great detail in the decomposition of assets and liabilities³⁰. For the previous years (1970-2000), they used older editions of national accounts: the 2000 edition (SNA93) and the 1990 edition (SNA68). In this update I use the 2015 edition of Japan’s national accounts (with 2011 as benchmark year), which follows SNA2008 and covers a longer period than those used by PZ: 1994-2015³¹. One novelty of these accounts with respect to the 2010 edition, is that they systematically report two categories of natural capital for each institutional sector: mineral and energy resources (AN.212) and Non-cultivated biological resources (AN.213)³². For the earlier years (1970-1993), I follow PZ and rely on the previous editions of national accounts. Finally, I include an estimate of national housing and national natural capital for the period 1970-2015, as the sum of the holdings of these assets by the different institutional sectors³³.

³⁰ The main tables for institutional sectors balance sheets (Stock accounts classified by institutional sector) only decompose non-financial assets into four categories: inventories, fixed assets, land and other non-produced assets (this latter category are fisheries for households and subsoil assets for non-financial corporations; other institutional sectors only hold non-produced assets in the form of land). However, data offering greater detail in the decomposition of fixed assets and land are available in two supplementary tables to the national accounts: “Net Capital Stocks of Fixed Assets classified by Institutional Sectors and Economic Activities” and “Value of Land by Prefectures (owned by Private Sectors)”.

³¹ http://www.esri.cao.go.jp/en/sna/data/kakuhou/files/2015/29annual_report_e.html

³² In the 2010 edition, only households and non-financial corporations included a non-produced asset different from land: fisheries in the case of households and subsoil assets in the case of non-financial corporations. In the new accounts, the general government also holds non-produced assets different from land (in the form of non-cultivated biological resources). Nevertheless, the value of these holdings, for the three sectors, is very small (see subsection natural capital).

³³ PZ report the value of private housing, but do not differentiate housing within the non-financial assets owned by other sectors. Natural capital is a memo item in their benchmark series of national wealth.

Private wealth (figure 33): The national accounts of Japan already differentiate the households and the NPISH sectors. We report series of wealth for the two sectors separately, which are then added into the private sector³⁴. For the period 1994-2015, I use directly the data from the 2015 National Accounts of Japan. Financial assets and liabilities already offer a great detail in their decomposition, but non-financial assets are only decomposed into 5 categories: inventories, fixed assets, land, mineral and energy resources and non-cultivated biological resources. To compute housing assets, I use data on dwellings from the supporting table “Net Capital Stocks of Fixed Assets classified by Institutional Sectors and Economic Activities (At current price)” and data on land underlying dwellings from the supplementary table “Value of Land by Prefectures (owned by Private Sectors)”³⁵. This supplementary table decomposes the total value of land into three categories: land underlying buildings and construction (AN.2111), Land underlying cultivation (AN.2112) and Others. I compute land underlying dwellings by using the proportion of dwellings relative to other buildings and construction in the fixed assets accounts (this is the same procedure used by PZ and recommended by DINA guidelines). Note that this table (Land) is not available in the 2015 edition of the national accounts, so I use the data from the 2014 edition³⁶. Overall, the new series of private wealth are slightly higher than the older ones during the 2000s, but are almost identical in the initial year of the new series: 1994. The difference between the two is mostly due to higher financial assets in the new series.

For the period 1970-1993, I extend separately the series of households and NPISH. For households I extend the following variables for which data are available: dwellings, land underlying dwellings, business assets³⁷, equity assets, pension and insurance assets, other financial assets and liabilities. Households net wealth is then obtained as the sum of the previous categories of financial and non-financial assets, net of liabilities. For NPISH I extend non-financial assets, financial assets and liabilities (there is no lower level of decomposition in the original data from PZ). In all cases the splicing procedure between the updated series and the series in PZ is the standard: extend backwards the new series using the growth rates of the equivalent categories in PZ. Over the period 1970-1993, the new series of private wealth are almost identical to those in PZ.

Public wealth (figure 34): For the period 1994-2015, data on public assets and liabilities are taken directly from the 2015 national accounts of Japan. These data include natural capital owned by the public sector (in the 2010 edition no category existed for public natural capital). In particular, the new accounts report a positive (although small) value for non-cultivated biological resources of the government. According to the supporting table on fixed assets (see private subsection above), the general government does not own dwellings, therefore, it is not necessary to compute the value of housing for this sector. Unfortunately, one limitation of Japan’s national accounts has to do with the

³⁴ Net wealth of NPISH is a very small part of private sector, with value closer to 20% of national income according to the latest national accounts (years 1994-2015). Households net wealth, on the contrary, is valued at around 600% of national income in the same period.

³⁵ According to the decomposition of dwellings across sectors from the fixed assets accounts, NPISH do not own dwellings. Only households do within the private sector.

³⁶ The values of total land owned by households are identical between the two editions over the period 1994-2013, but are slightly higher in the 2015 accounts for the year 2014: 680,525 billion of yens in the 2015 edition and 672,514 in the 2014 one. I then extend the total value of land in the 2014 edition to the year 2015 using the growth rates between these two years in the 2015 accounts. Data for the 2014 edition of the national accounts can be found in the following link: http://www.esri.cao.go.jp/en/sna/data/kakuhou/files/2014/28annual_report_e.html

³⁷ Within business assets, two additional categories are extended: agricultural land and natural capital.

presentation of the variable “Land”, which in the benchmark balance sheets is not decomposed into different types. For households and corporations this is not an issue given that this decomposition is available in the supplementary table on land, but this is not the case for the government. Hence, it is not possible to separate public agricultural and forestry land from public built-up land.

During the period 1994-2011, the updated series of government wealth are higher than the old ones, by about 20-25% of national income. This is mostly due to higher non-financial assets and, to a lesser extent, to slightly higher financial assets too. By 1994 (first year of data in the new official series), the updated public net wealth equals 125% of national income while it was 104% in PZ. To extend the series backwards to 1970, I splice the latest official series with those in PZ. Before 2000, PZ report data for three variables of the public sector: non-financial assets, financial assets and liabilities. I then extend these three variables in the new data with the growth rates of the equivalent ones in PZ for the period before 1994. In addition, I extend also the public natural capital series (see subsection on natural capital). Given the initial differences in 1994, government wealth is also higher in the revised series during the 1970-1993 years. However, differences tend to decrease backwards in time due to the better financial position (financial assets net of liabilities) of the Japanese government at the beginning of the 1970s, and to the lower importance that non-financial assets had in these initial years.

Corporate wealth (figure 35): The procedure to update the corporate wealth series follows that of the private and the public sectors: use the new official national accounts for the period 1994-2016, and extend backwards the new series with the growth rates in those from PZ. The only difference between the new series and those in PZ is that I include an estimate of housing and natural capital owned by corporations (see the subsections housing and natural capital). Overall, the updated series are very close to the old series, with Tobin’s Q being slightly higher in the new ones.

Housing (figure 36): In this update I provide series of national housing (as the sum of housing owned by the different institutional sectors), in addition to the series of private housing presented by PZ. As explained in the private sector section, to construct the variable housing it is necessary to estimate two of its subcomponents for each sector: dwellings (the value of the structure) and land underlying dwellings. According to the supplementary tables on fixed assets (which in the latest national accounts of 2015 cover the period 1994-2015), only households and corporations own housing in Japan. For these two sectors, it is possible to reconstruct land underlying dwellings using the supplementary table on land, which decomposes the land of these sectors into three different types: land underlying buildings and constructions, land underlying cultivations, and others. During the period 1994-2015, households’ share on national housing represented between 85% and 87% of the total, the residual being held by corporations. It is easy to extend the series of private housing backwards to 1970, given that these two variables were already estimated by PZ.

To reconstruct corporate housing over the 1970-1993 period, I need to make some assumptions. This is because data are not available for dwellings or for land owned by this sector over these years as a separate item within the corporate balance sheet. I start by observing that the share of corporate dwellings over total national dwellings is relatively constant over the 1994-2015 years: between 13% and 15% of the total. Then I assume that the share observed in 1994 (15%) is constant for the previous period too. This way I obtain an estimate of corporate dwellings based on the private series. Then I calculate corporate land underlying dwellings. To do this, I assume that the value of corporate land relative to households land kept the same proportion over the period

1970-1993 than the one observed in 1994, and I apply the ratio of land over dwellings to the previously calculated series. Needless to say, this estimate should be taken as an imperfect approximation in the absence of richer data, with the goal of having national, and not only private, series of housing. Overall, these estimates point to corporate housing representing around 7% to 10% of total national housing over the full period 1970-2015.

Agricultural land: I use the latest national accounts of 2015 to report agricultural land owned the private and corporate sectors for the years 1994-2015. In both cases, I use the variable “land underlying cultivations” in the supplementary table to the national accounts on land (see private sector subsection). Given that similar data are not available for the government sector, I do not report data for this sector or for the national economy (the latter would be the sum of agricultural land owned by the private, corporate and public sectors). Before 1994, I only extend backwards the series of private agricultural land using the equivalent variable in PZ (which is available since 1970). The splicing procedure is the standard: extend backwards the updated series with the growth rates in PZ.

Natural capital: The latest national accounts already report data on natural capital for every institutional sector, concretely for the following two variables: Mineral and energy resources (AN.212) and non-cultivated biological resources (AN.213). On the contrary, the 2010 edition of the national accounts used by PZ only reported data for two items: fisheries owned by households and subsoil assets owned by corporations. PZ reported these assets as a memo item, not included in their benchmark series of wealth.

For the period 1994-2015, I use the data on natural capital directly from the 2015 national accounts. Overall, the value of these assets is very small (below 3% of national income over the period 1994-2015). For the period before 1994, PZ report the value of total natural capital in Japan. I then extend national natural capital with the growth rates in PZ, and assume that the distribution across sectors follows the same proportions than in 1994. This is a rough approximation. However, given the small dimension of these assets, these assumptions have no significant consequences on the aggregate values of wealth for each institutional sector.

United Kingdom

Overview

PZ's data for the UK spliced different periods of official balance sheets, some of them starting as far as 1957, and ending in all cases in 2010. In addition, they presented annual series of private, public and national wealth since 1855. I have extended the series to 2011-2015 and revised the existing series for the period before.

Explanation

For the period 1987-2010, PZ used the 2011 edition of the official national accounts in the UK ('Blue Book'), produced by the Office for National Statistics (ONS). This edition follows the SNA93. Before 1987, they combined official national accounts from previous editions of the Blue Book with the work of economic historians and contemporaneous authors. In this update I use the latest edition of the Blue Book (2016), which already follows SNA2008 and covers the years 1995-2015 for non-financial assets and 1987-2015 for financial assets and liabilities. To cover the period 1987-1995 for non-financial assets, I have used data from the Blue Book of 2012, whose values are almost identical

to the 2016 Blue Book during the years in which both editions coincide: 1995-2011. In addition, I splice the new series with the historical ones. A correction is made to the series of private housing for the period 1948-1987, to make them more consistent with the way SNA defines economic assets and classifies them across sectors. I also estimate national housing and agricultural land during the period 1920-2015 (in PZ, the focus was in housing and agricultural land owned by the private sector). It is worth noting that the ONS prepares a substantial revision of their balance sheets in the next edition of the Blue Book (2017), which will affect the measurement of land and its classification across sectors³⁸.

Private wealth (figure 37): For the period 1987-2010, PZ's data for the UK comes straight from the 2011 edition of the Blue Book, which reports together (not separately) the households and the NPISH sectors. For the years 1948-1986, they relied on the work of Blake and Orszag (1999) ('BO', from now on) while for the period 1920-1948 they used the estimates from Solomou and Weale (1997). For the period 1855-1920, they present annual series of net private wealth based on certain year-specific estimates made by contemporaneous authors, which they splice using accumulation equations.

In this update, I use the 2016 edition of the Blue Book to cover the period 1987-2015. The only exception are non-financial assets, which are not available in the 2016 edition and are taken from the 2012 edition instead³⁹ (see above). The extension for the period 1920-1987, is a bit complex. For non-financial assets, PZ present two series of assets: housing and other business assets. For housing, I make a conceptual correction (see below: sub-section 'housing'). Other business assets are extended using the standard procedure: take the most recent series, and extend them using the growth rates in the old ones. Between 1948 and 1987, total financial assets are the result of extending, separately, two sub-categories of assets which are available in these years: pension assets and other financial assets. Before 1948, only total financial assets are available. In all cases, the extension of financial assets is based on the standard procedure. Liabilities are extended throughout the period 1920-1987 without a further decomposition and using the same procedure than with other business assets and financial assets. For the period 1855-1920, PZ present annual series of net private wealth but not for different subcomponents. This is because they calculate net private wealth in some specific years, which are then spliced with accumulation equations. Given that the new and the old series of private wealth are almost identical by 1920, I take directly the values in PZ without modification.

Public wealth (figure 38): PZ present two series of government wealth, the benchmark series correcting financial assets and the non-corrected series. In this update I use the

³⁸ ONS's revision of the Blue Book is a step forward to fully adapting the SNA's guidelines. In this edition, housing and other types of constructions will be separated into the produced element (structure) and the non-produced element (land underlying). It will also report separately the households sector (S.14) and the Non-profit institutions serving households sector (S.15) and will split cultivated assets into agricultural and forestry types. Importantly, there will be a significant reallocation of housing across sectors, reducing the holdings of households and increasing those of public corporations (NPISH will not own housing). This is likely the result of classifying housing associations within the public corporate sector. See: <https://www.ons.gov.uk/economy/nationalaccounts/uksectoraccounts/articles/nationalaccounts/articles/changestothernationalbalancesheetforthebluebook2017>

³⁹ Up to the 2011 edition of the Blue Book, non-financial assets included the category "non-marketable tenancy rights", which are not an asset according to SNA (reason why PZ excluded this variable in their series). Since the 2012 edition, this variable is no longer part of the private sector balance sheet. Hence, I do not need to make any adjustment to the data.

corrected series. These series upgrade government net wealth during the 1940-2010 years by including within them the net wealth of the public corporate sector. This is due to a significant mismatch between market-value and book-value of equity for public corporations, which artificially lowers government financial assets (see Piketty and Zucman (2014) appendix, pg. 105). Before 1958, Piketty and Zucman use accumulation equations to extend the non-financial assets of the public sector based on existing estimates for certain years (they do have data on net financial assets). Then, they add non-financial assets, net financial assets and the net wealth of public corporations to obtain total government wealth⁴⁰

I follow the same procedure. For the years 1987-2015, I use the ONS2016 and ONS2012 series of government wealth to which I add the net wealth of public corporations (over these years this variable is very small: between 1-6% of national income). Then I extend backwards the series of non-financial assets, financial assets and liabilities, using the growth rates of the equivalent series in PZ. Non-financial assets are available since 1958 (including two subcomponents: housing and agricultural land), but detailed data on financial assets and liabilities are only available since 1967. Given that by 1967 the new series of government wealth are very close to those in PZ (31% of national income ad 29% respectively), I extend the variable government wealth for the period 1855-1967 using the series in PZ without further modification.

Corporate wealth (figure 39): In this update I report the corporate balance sheet for the years 1988-2015. For financial assets and liabilities, data come from the 2016 edition of the Blue Book. For non-financial assets, the data corresponding the years 1995-2015 come from the Blue Book of 2016, while data for the period 1988-1995 come from the 2012 edition of the Blue Book (the two vintages of national accounts are spliced with the standard procedure: extending the new series with the growth rates of the older ones). In addition, data for housing and agricultural land are extended backwards to 1967 (these variables are available since this date in the Blue Book of 2012). Overall, the updated Tobin's 'equity' Q is close to the old one, but it is slightly higher. This is mostly the result of higher values for non-equity liabilities in the new series, which reduce the net worth of corporations (denominator in the Q ratio).

Housing (figure 40): In this update, I make some conceptual corrections to the measurement of private housing in PZ for the period 1948-1987. Over these years, they use the data from BO, but the measurement of housing in BO is not fully consistent with the current definition and sector classification of economic assets in SNA guidelines. In addition, I account for housing owned by corporations and the government, two concepts that were not previously differentiated within the non-financial assets of corporations and the government in PZ. Note, however, that the actual values of the new series do not differ substantially from the older ones (figure 41), but they are better at approximating the changing tenure structure in the UK: the rise of social housing during the 1960s and 1970s, and the reversal after the introduction of the Right to buy Scheme at the beginning of Margaret Thatcher's government⁴¹.

⁴⁰ Net wealth of public corporations is only significant since 1940 onwards.

⁴¹ The Right to buy scheme is a policy enacted by the Thatcher's government and still active today, which was passed within the Housing Act 1980. It allowed tenants of social housing owned by local authorities, to buy their homes with a discount with respect to their market value (between 33% and 50% discount), and which was complemented with lending facilities to access housing mortgages. Under this scheme, social housing sales peaked during the 1980s, lowering afterwards (for a detailed description, see chapter 5 in Whitehead and Scanlon (2007)). In 2015, the Cameron's government extended the Right to buy scheme to social housing owned by

For the period 1996-2015, I use data from the 2016 edition of the UK national accounts from the Office for National Statistics (ONS). National accounts estimate the market value of housing at the sector level (variable “Dwellings”, which combines the value of the structure and of land underlying). Note that ONS does not decompose the private sector into households and NPISH. This is relevant because NPISH in the UK play a noticeable role as providers of social housing through ‘housing associations’. For the period 1988-1995, I use the data available in the 2012 edition of the Blue Book, without modification (the value of housing is identical in ONS2016 and ONS2012 during the years in which data in the two editions coincide: 1996-2011)⁴².

The backwards extension to 1948 is more complex. Over the 1948-1987 years, PZ used data from BO, which they slightly upgraded to match the ONS’s series of private housing from 1987 onwards. However, BO series are not completely compatible with the modern series of housing, for two reasons:

(1) BO estimate personal housing, and not private housing. However, housing associations (a type of NPISH) own a non-negligible share of the UK’s housing stock: from 2% of the total stock in 1980 to 10% in 2014 (see footnote 43 for a link to official tenure statistics). Hence, they should be included within housing owned by the private sector.

(2) Their measure of personal housing is not compatible with the SNA criteria to classify assets at the sector level. This is because they include “non-marketable tenancy rights” within personal housing. From 1975 onwards, BO use data on personal wealth from historical versions of the UK national accounts. In these series, the ONS estimated an asset category for tenants named “non-marketable tenancy rights”. However, this asset category is not recognized as such in the SNA (reason why PZ also deduct their value in the post-1987 period, when they use the 2011 Blue Book series that still included this category). For the period 1948-1975, BO multiply the average market value of dwellings by the number of owner-occupied dwellings. Then, they calculate “non-marketable tenancy rights” for the remaining stock of dwellings (which include, mainly, tenants of both private and social dwellings). They assume that non-owner-occupied dwellings are worth a constant 70% of the market value of owner-occupied dwellings, which is the ratio of tenancy rights relative to owner-occupied dwellings observed in the official ONS data for 1975.

This is incorrect. To explain the need for a correction, let me explain the tenure structure in the UK and how the sector classification should be according to the SNA. In the UK, there exist 5 types of tenure: (a) owner-occupied; (b) Rented privately; (c) Rented from local authorities; (d) Rented from housing associations; (e) Other public sector dwellings. From the SNA perspective, (a) and (b) are part of the personal sector; (c) are social dwellings owned by public corporations; (d) are social dwellings owned by NPISH; (e) are dwellings owned by the public sector. Hence, housing of the private sector (personal plus NPISH) should include categories (a), (b) and (d). Category (c) should be part of the corporate sector and (e) of the public sector⁴³. However, BO are assuming, implicitly,

housing associations (the other major provider of social housing in the UK, together with local authorities, and which presence has risen since the 1980s). For data on the evolution of UK’s housing tenure structure see: <https://www.gov.uk/government/statistical-data-sets/live-tables-on-dwelling-stock-including-vacants>

⁴² Public housing is available since 1957 in the 2012 edition of the Blue Book, but their value is almost negligible (see footnote 20).

⁴³ General government dwellings are almost negligible during the whole period (i.e. below 1% of national income) given that local authorities, the main public housing provider, own equity on

that the average market value of dwellings is only representative of owner-occupied dwellings and that both social and privately rented dwellings should be part of personal housing with a 30% discount with respect to the average market value. In a historical period (1948-1987) of drastic changes in the tenure composition in the UK (figure 42)⁴⁴, this approach is particularly problematic.

I propose an alternative estimate of housing in the UK for the period 1948-1987, which accounts for national housing, and which is decomposed across institutional sectors (private, corporate and public sectors). Firstly, I obtain national housing over the period 1948-1987 by multiplying the average price of dwellings by the number of dwellings in the UK (data from table 3 in BO). Then I upgrade the value of these series to match the ONS data since 1987 (ONS series are about 10% higher by 1987). Next, I decompose national housing into the private sector (households plus NPISH) and the non-private sector (corporations plus government). I do this by comparing two indicators for the period 1987-1994 (period of overlap of BO series and the new ONS accounts): (i) the evolution of private tenure as a percentage of total UK households; (ii) the share of national housing owned by the private sector in ONS statistics. I observe that during the period 1987-1994: (i) the average share of private tenure was 77%; (ii) the average share of the private sector on the value of national housing was 90%. I then split total national housing over the period 1948-1987 into private and non-private owners according to the corresponding tenure proportions. Then I upgrade this splitting to account for the higher value of private housing relative to non-private housing using the proportions of private value vs private tenure observed in the 1987-1994 years ($1,16 = 90 / 77$).

Finally, for the period 1920-1948, I follow PZ and splice the new series of private housing with those of Solomou and Weale (1997) so they converge by 1940. I also make a rough estimate of non-private housing by using the proportion of non-private tenure over the total. By 1919, non-private tenure represents 1% of the total stock of dwellings in the UK, and 10% by 1939. I linearly interpolate in between. These values for non-private housing should be seen as a rough approximation in the absence of more specific data.

Agricultural land: In this update I estimate private, corporate and public agricultural land. For the period 1995-2015, I use the latest Blue Book of 2016, and I take the value of the variable “Cultivated biological resources” at the sector level. Note that this variable includes both the produced element (i.e. crops) and the non-produced element (land). It also groups agricultural and forestry land together. Hence, it overestimates the value of this asset. However, the bulk of this value probably captures agricultural land: forestry land is almost negligible in the UK, according to the UNU-IHDP Inclusive Wealth Report, and produced agricultural asset are typically about 15% of the value of land in other countries. In the forthcoming 2017 edition of the Blue Book, ONS plans to estimate separately agricultural land from the other components.

For the period 1987-1995, I splice the ONS2016 series with the equivalent in ONS2012. By 1995, the ONS2016 are slightly higher than the ONS2012, so I apply the standard

public corporations providing social housing. Therefore, dwellings owned by local authorities are classified within the corporate sector, while the equity held by local authorities on these corporations are classified within the general government financial assets.

⁴⁴ Sources for this figure are: Department for Communities and Local Government (2012, last update April 2017): <https://www.gov.uk/government/statistical-data-sets/live-tables-on-dwelling-stock-including-vacants> and ONS historical data on England and Wales tenure: <http://webarchive.nationalarchives.gov.uk/20160105160709/http://www.ons.gov.uk/ons/rel/census/2011-census-analysis/a-century-of-home-ownership-and-renting-in-england-and-wales/short-story-on-housing.html>

splicing procedure: extend the new series with the growth rate of the old ones. The ONS2012 series are identical to the data used by PZ. Hence, I splice the new series with those in PZ for the period 1920-1987. Over the period 1920-1987 I also estimate national agricultural land. I observe that by 1987, private agricultural land represents 87% of national agricultural land. I assume that this value goes up to 100% in 1920, and I linearly interpolate in between. Overall, agricultural land has a limited role in the UK throughout the period 1920-2015, representing 33% of national income in 1920 and 14% in 2015.

Natural capital: Data for natural resources other than forestry land (which is included in the variable cultivated assets: see above) are not available in the UK balance sheets. According to the UNU-IHDP Inclusive Wealth Report, as of 2010 energy and mineral reserves are almost negligible in the UK (around 2% of GDP).

United States

Overview

PZ present series of US private and public wealth, with annual frequency, for the period 1870-2010 and for corporate wealth for the period 1946-2010. In this update I use the new data on US wealth from Piketty, Saez and Zucman (2018), which revise the existing series of PZ for the years 1913-2010 and extend them for the years 2011-2015. In addition, I splice these new series with those in PZ for the years 1870-1913.

Explanation

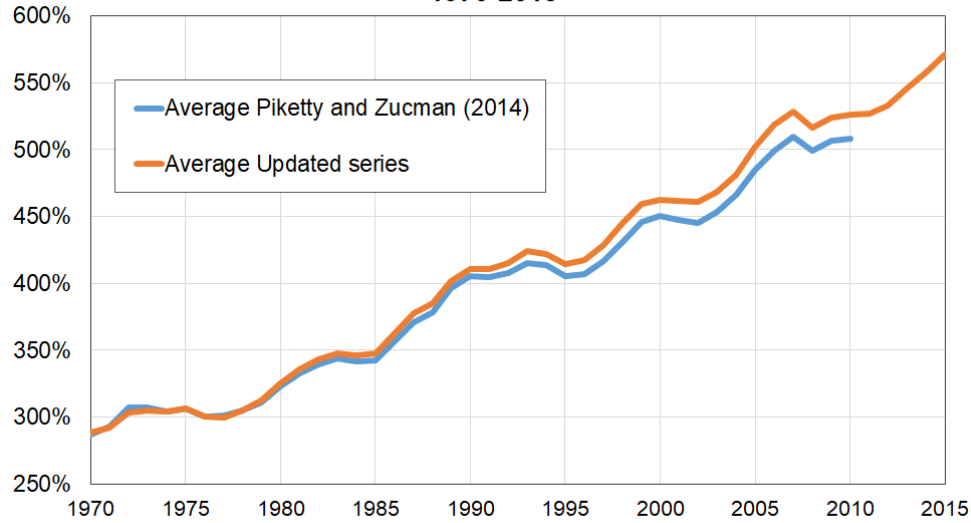
PZ covered in great depth the evolution of wealth in the US. They provide annual series of private and public wealth since 1870 and of corporate wealth since 1946. These series end in 2010. In a recent work, Piketty, Saez and Zucman (2018) ('PSZ' from now on) update these series to 2015, presenting the private and public series since 1913 and the corporate ones since 1946. In this update I use directly these revised data. In addition, for the private and public sectors, I splice the series of PSZ with those of PZ for the years 1870-1913. The splicing procedure is very simple. Public wealth series are equal in the new and updated series in 1913, so I take data from PZ for the previous period without any modification. The new series of private wealth, however, are slightly higher in 1913: they are equal to 469% of national income in the updated series and to 437% in the old version. I then make the two series converge in 1907, and assign a negative annual capital gain of 1.5% to the growth rates of the updated series over the years 1907-1913. Figures 42, 43 and 44 compare the update and the old series of private, public and corporate wealth (Tobin's Q), respectively.

In addition, I include two new series in this update of the WID.world database: national housing for the period 1946-2015 (figure 45) and national agricultural land for the period 1913-2015 years. Data are taken directly from the sector-specific wealth series in PSZ. Natural capital other than land is not covered in PZ or PSZ given that these data are not reported in the official balance sheets of the US.

References

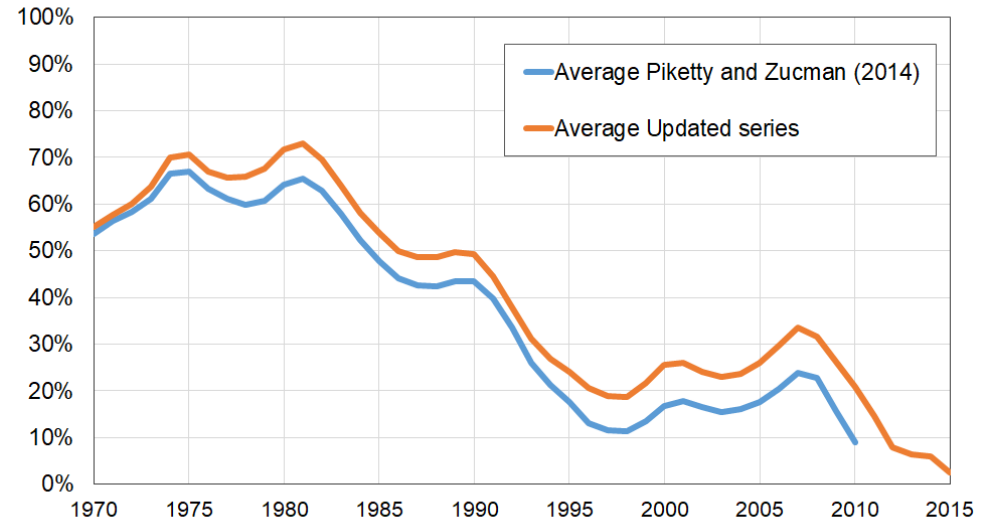
- Alvaredo, F., Atkinson, A. B., Chancel, L., Piketty, T., Saez, E., & Zucman, G. (2017). *Distributional National Accounts (DINA) Guidelines: Concepts and Methods used in WID.world* (No. 2016/1). *WID.world Working Paper*.
- Baldini, M. (Ed.). (2012). *Le politiche sociali per la casa in Italia*. Ministero del lavoro e delle politiche sociali.
- Blake, D., & MICHAEL ORSZAG, J. (1999). Annual estimates of personal wealth holdings in the United Kingdom since 1948. *Applied Financial Economics*, 9(4), 397-421.
- Brandolini, A., Cannari, L., D'Alessio, G., & Faiella, I. (2006). Household wealth distribution in Italy in the 1990s. *Wolff EN (a cura di), International Perspectives on Household Wealth*, Cheltenham, Edward Elgar Publishing Limited, 225-245.
- Brede, S. & Schmalwasser, O. (2015) *Grund und Boden als Bestandteil der volkswirtschaftlichen Vermögensbilanzen*, in *Wirtschaft und Statistik* 6/2015
- Dol, K., & Haffner, M. (2010). Housing statistics in the European Union 2010. *Delft University of Technology*.
- Destatis (2017). Balance sheets for institutional sectors and the total economy.
- Eurostat (2014). Manual on the changes between ESA 95 and ESA 2010.
- Garbinti, B., Goupille-Lebret, J., & Piketty, T. (2016). Income Inequality in France, 1900-2014: Evidence from Distributional National Accounts (DINA). *WID.world Working Paper*.
- Istat (2011), *Compilation of Annual Balance Sheets for Non-financial Assets: Methodological Approach, Main Outcomes and Open issues in the Italian Experience. Paper for the Conference on strengthening sectorial position and ow data in the macroeconomic accounts, IMF and the OECD, February 28-March 2, 2011*.
- Kazi, N. (2017). Canada's quarterly Natural Resource Wealth. *Statcan, Catalogue no. 16-002-X*.
- Piketty, T., Saez, E., & Zucman, G. (2018). *Distributional national accounts: Methods and estimates for the united states* (No. w22945). *Quarterly Journal of Economics*. Forthcoming.
- Piketty, T., & Zucman, G. (2014). Capital is back: Wealth-income ratios in rich countries 1700–2010. *The Quarterly Journal of Economics*, 129(3), 1255-1310.
- Piketty, T., & Zucman, G. (2014). Capital is back: Wealth-income ratios in rich countries 1700–2010. *Online appendix* (<http://piketty.pse.ens.fr/files/PikettyZucman2013Appendix.pdf>)
- Solomou, S., & Weale, M. (1997). Personal sector wealth in the United Kingdom, 1920–56. *Review of Income and Wealth*, 43(3), 297-318.
- UNU-IHDP, (2014). Inclusive wealth report 2014. *Measuring progress toward sustainability*.

Figure 1: Average private wealth / national income ratio 1970-2015



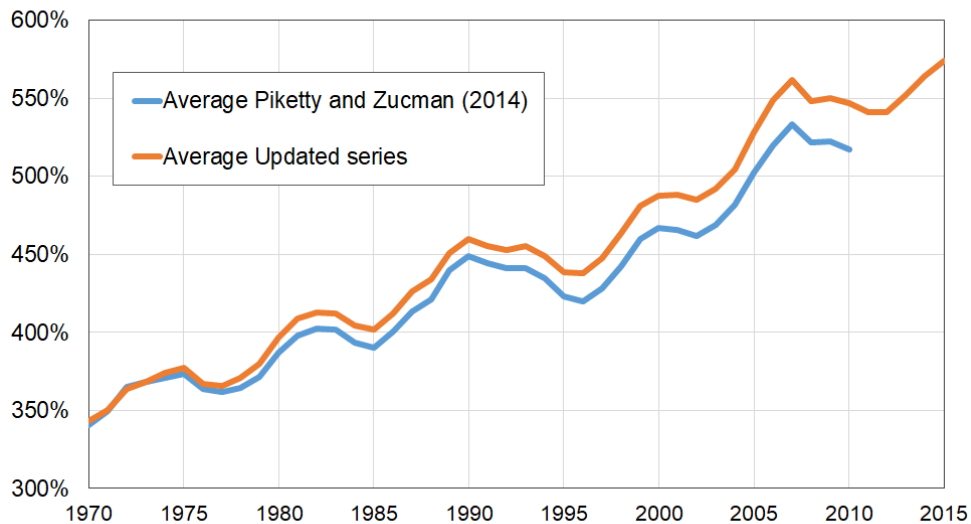
Note: Arithmetic average of countries' private wealth / national income ratios. Source: see country-specific subsections.

Figure 2: Average public wealth / national income ratio 1970-2015



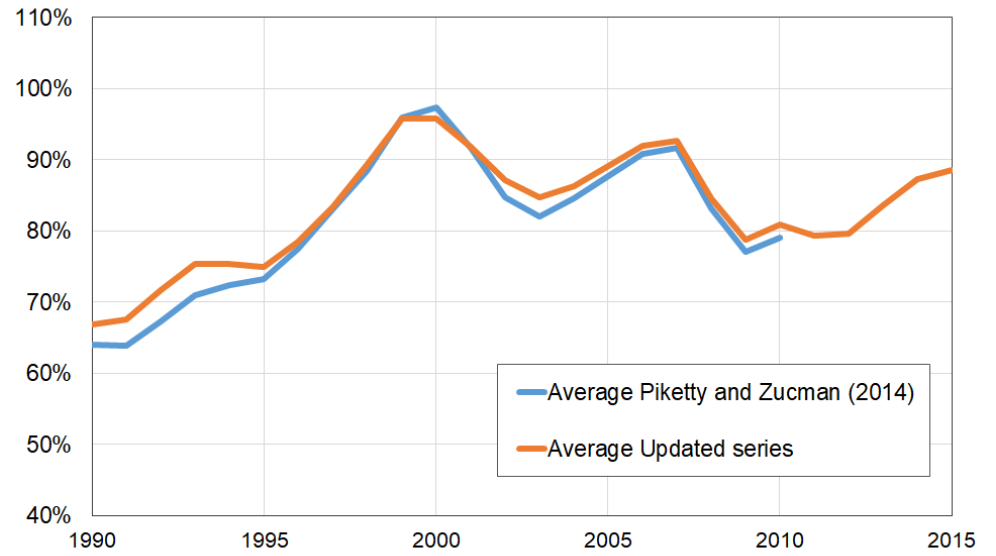
Note: Arithmetic average of countries' public wealth / national income ratios. Source: see country-specific subsections.

Figure 3: Average market-value national wealth / national income ratio, 1970-2015



Note: Arithmetic average of countries' national wealth / national income ratios. Source: see country-specific subsections.

Figure 4: Average Tobin's Q ratios, 1990-2015



Note: Arithmetic average of countries' Tobin's 'equity' Q. Source: see country-specific subsections.

Figure 5. Australia: Net private wealth (% national income), 1970-2016

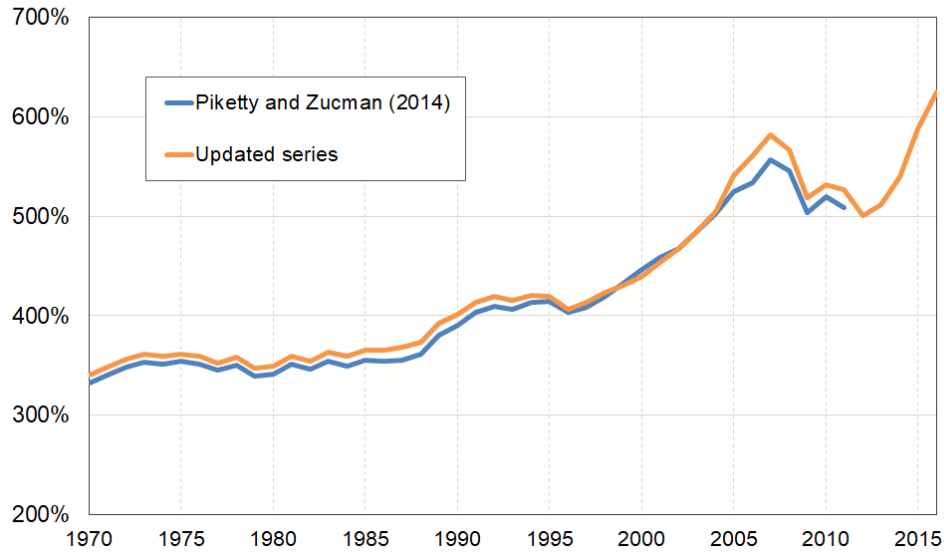


Figure 6. Australia: Net public wealth (% national income), 1970-2016

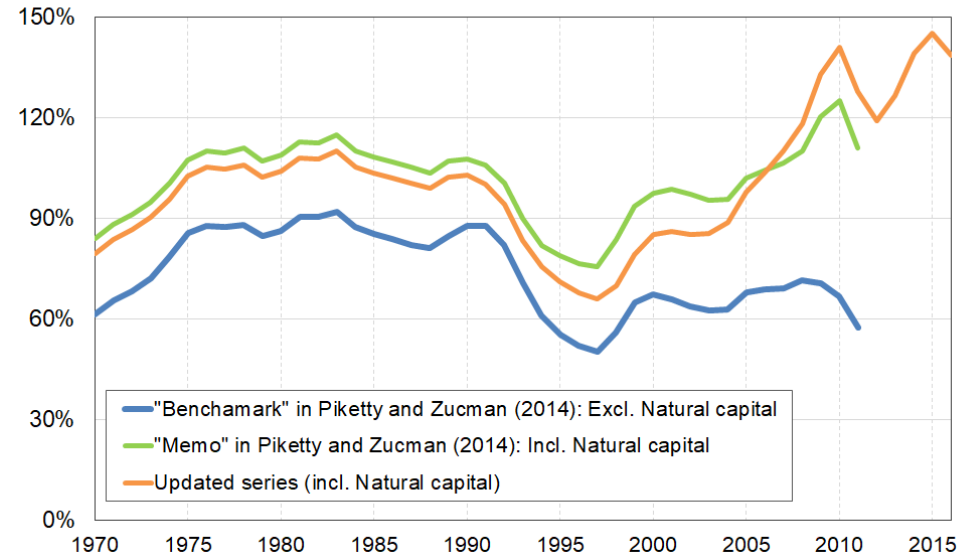


Figure 7. Australia: Tobin's Q, 1990-2016

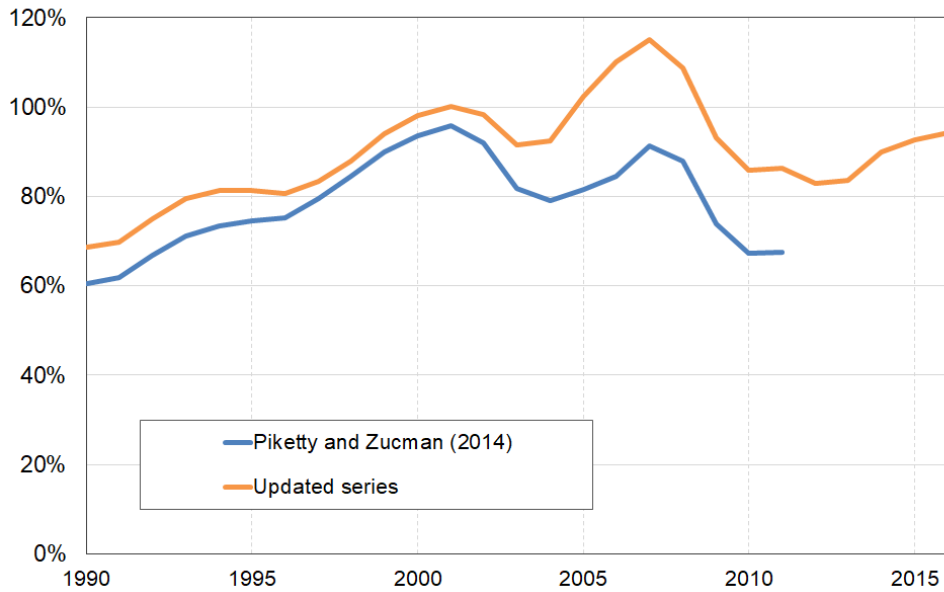


Figure 8. Australia. National housing: decomposition by institutional sector (% national income), 1970-2016

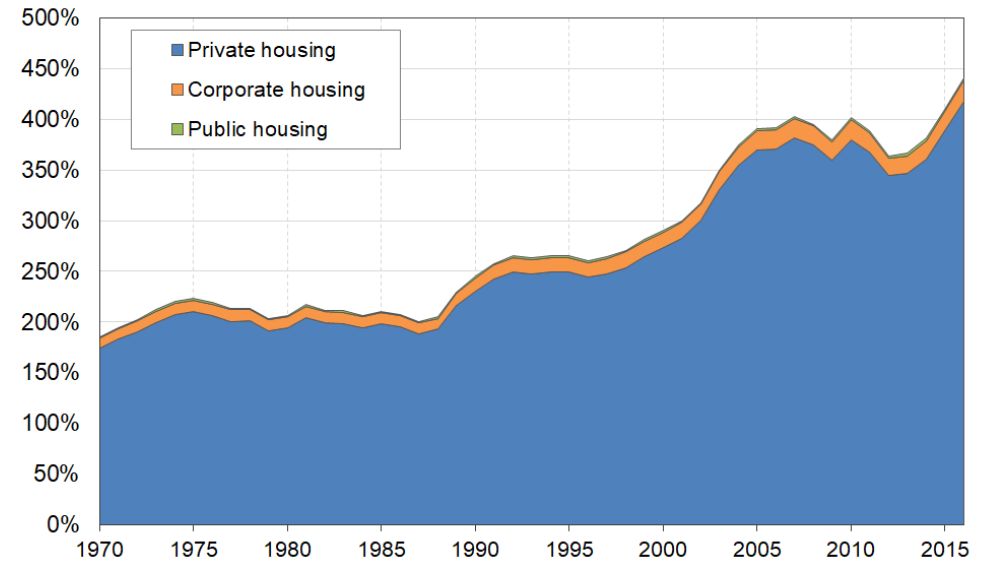


Figure 9. Australia: National natural capital (% national income), 1970-2016

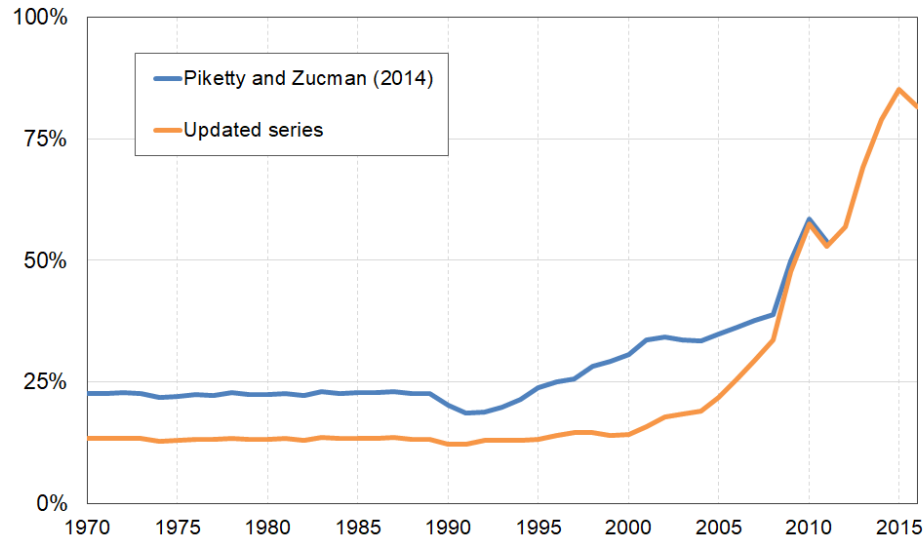


Figure 10. Canada: Net personal wealth (% national income), 1970-2016

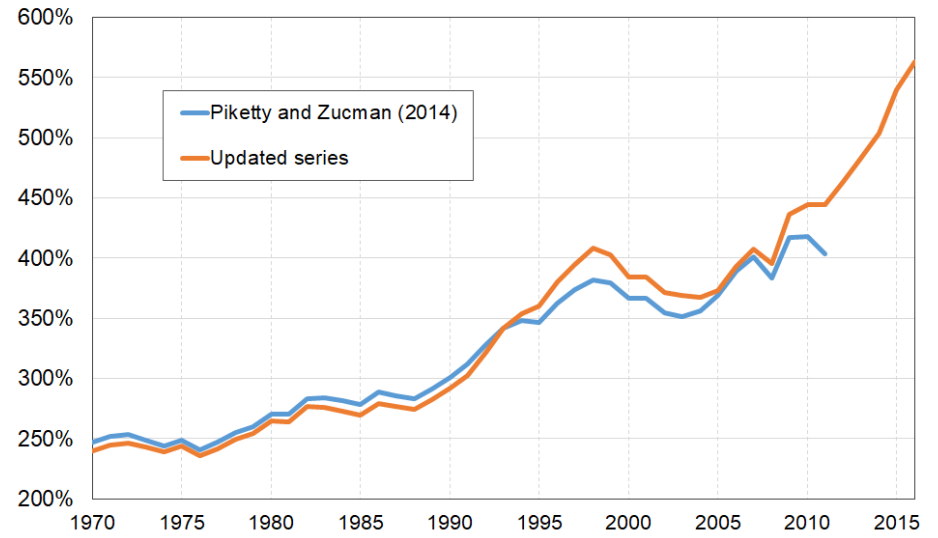


Figure 11. Canada: Net public wealth (% national income), 1970-2016

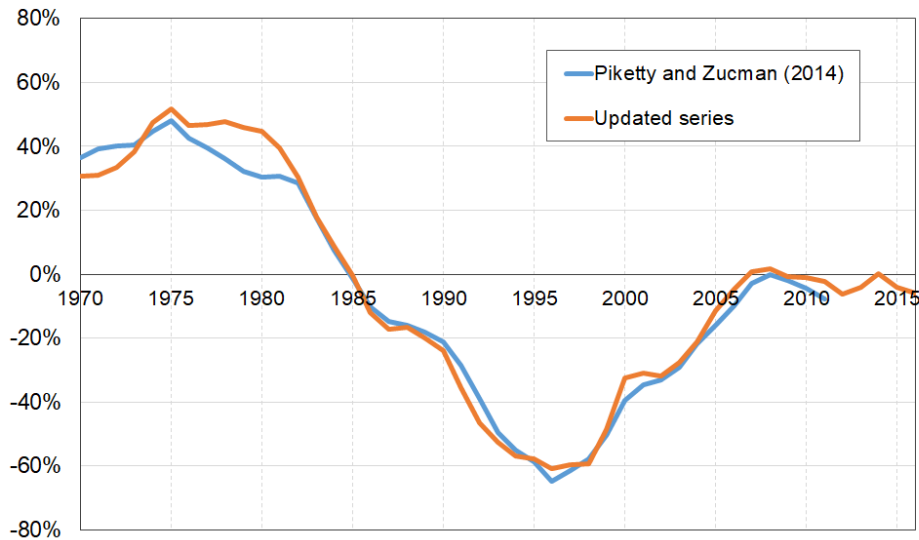


Figure 12. Canada: Tobin's equity Q (% national income), 1970-2016

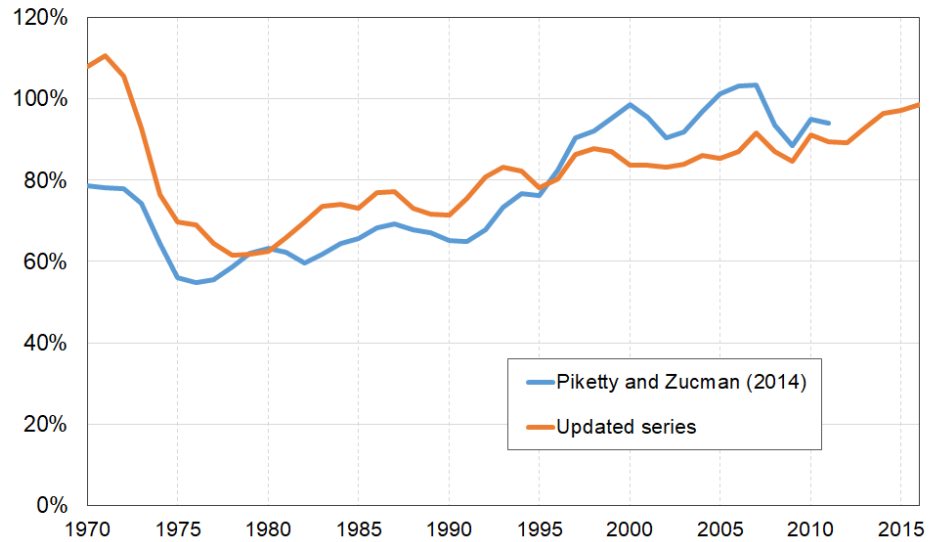


Figure 13. Canada. National housing: decomposition by institutional sector (% national income), 1970-2016

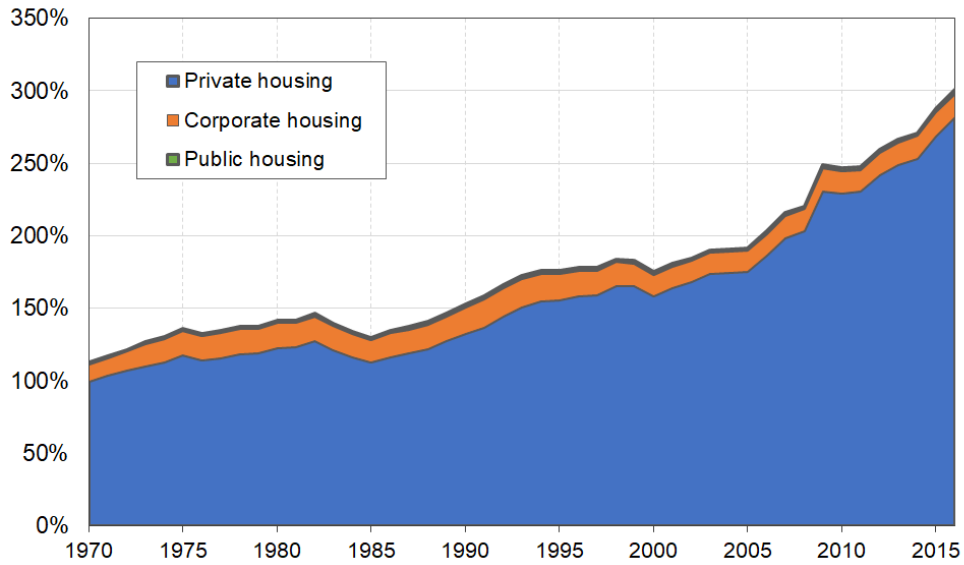


Figure 14. Canada. Natural resources: Comparison of series (% national income), 1970-2015

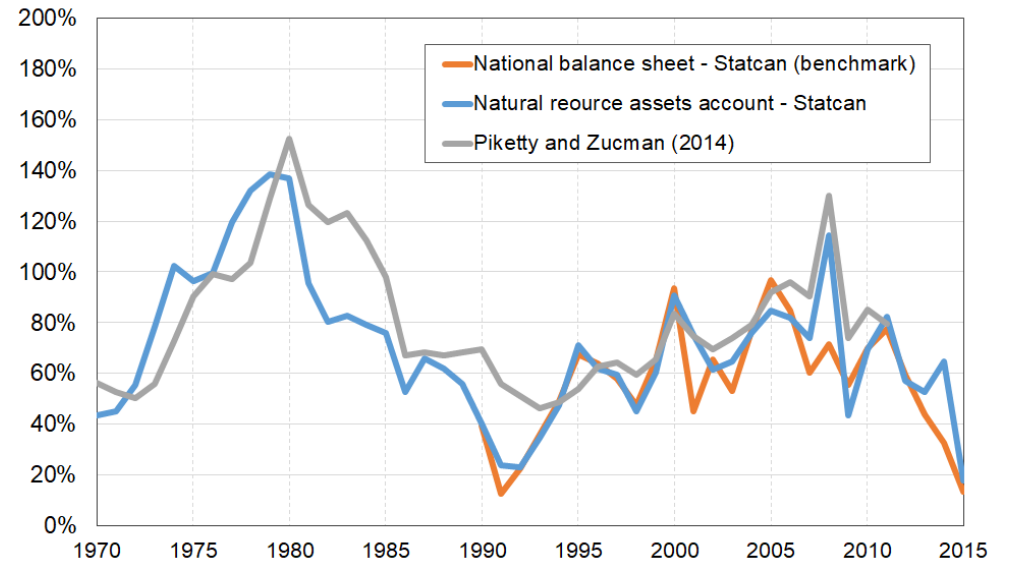


Figure 15. Canada. Agricultural land: decomposition by institutional sector (% national income), 1970-2016

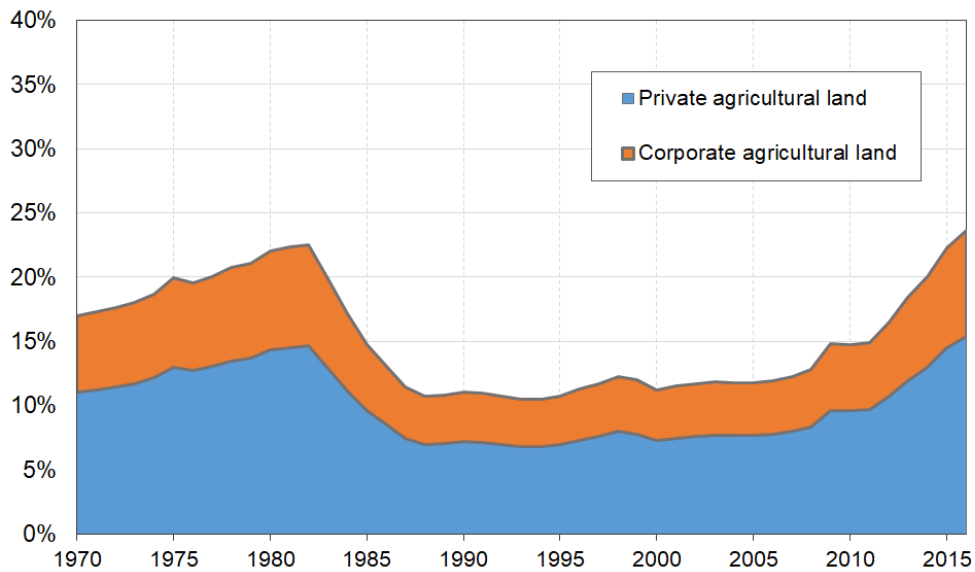


Figure 16. France. Net private wealth (% national income), 1970-2010

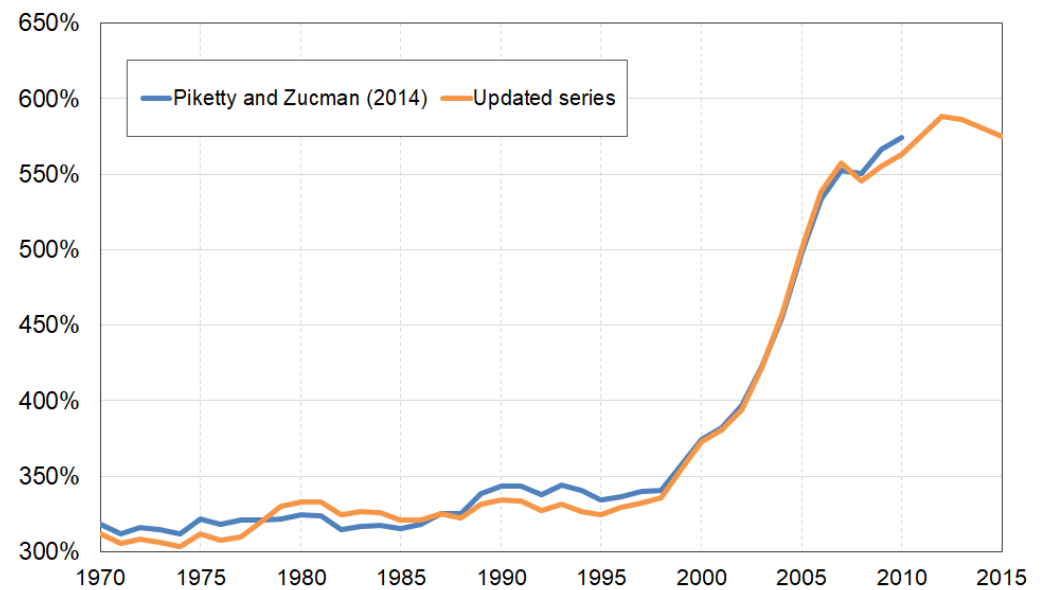


Figure 17. France. Tobin's 'equity' Q, 1970-2010

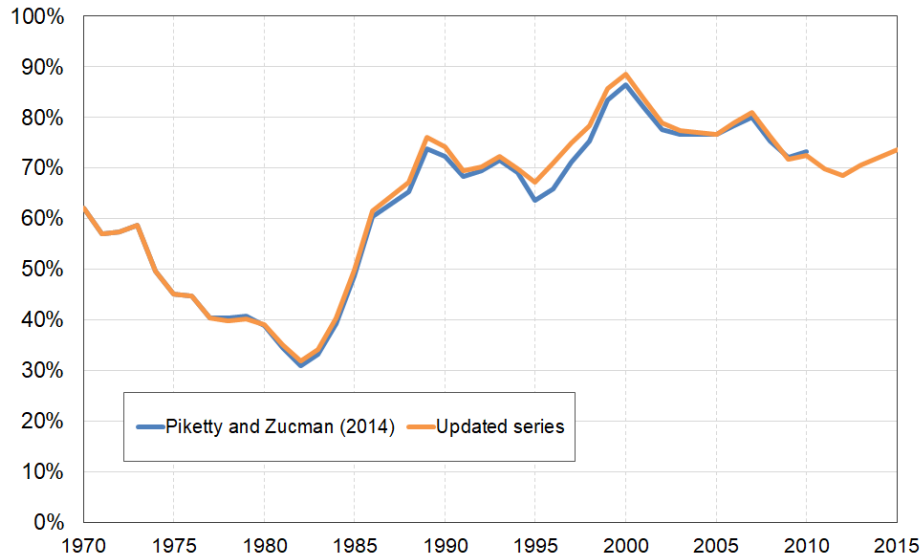


Figure 18. France. Net public wealth (% national income), 1970-2010

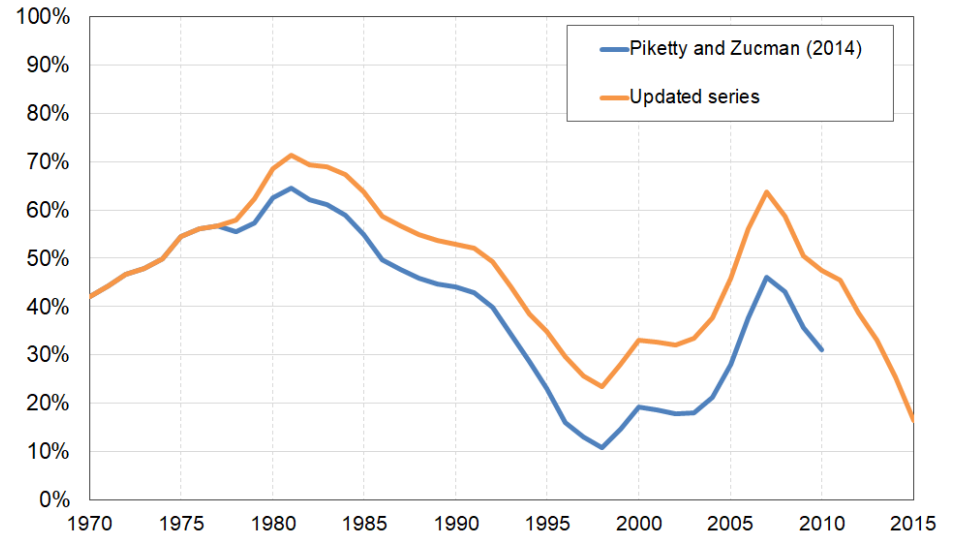


Figure 19. France. National housing: decomposition by institutional sector (% national income), 1970-2015

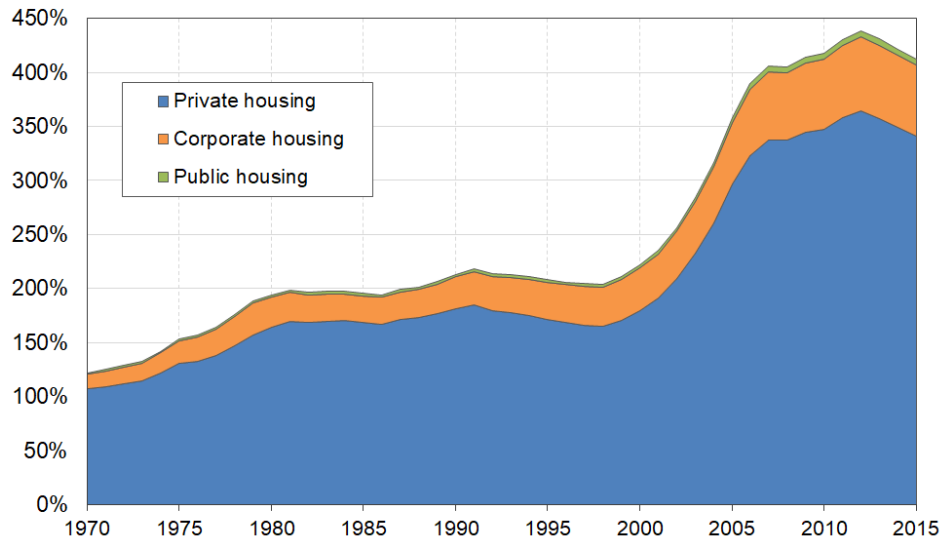
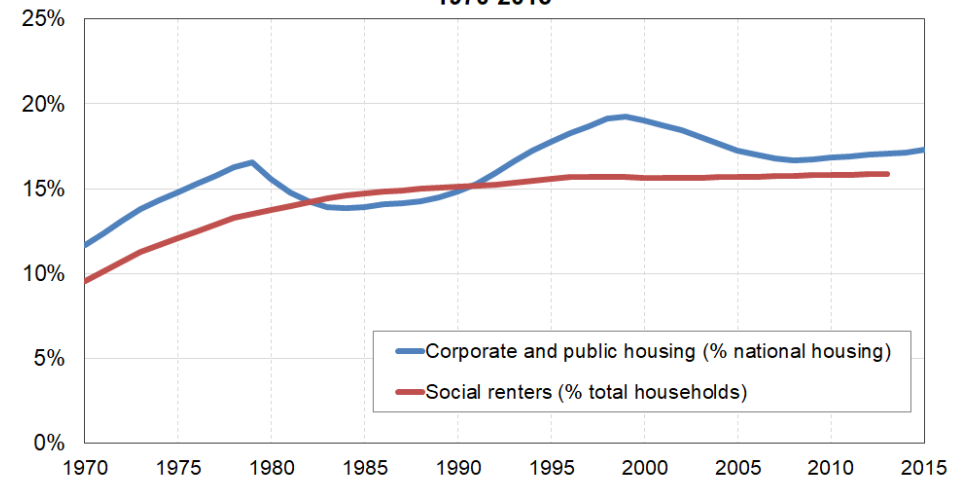


Figure 20. France. Renters of social housing (% total households) and 'Corporate and public housing' (% national housing), 1970-2015



Source: Social renters from French Housing Survey, waves of 1970, 1973, 1978, 1984, 1988, 1992, 1996, 2002, 2006 and 2013. Corporate and public housing are own calculations based on INSEE's balance sheets (see text).

Figure 21. France. National agricultural land: decomposition by institutional sector (% national income), 1970-2015

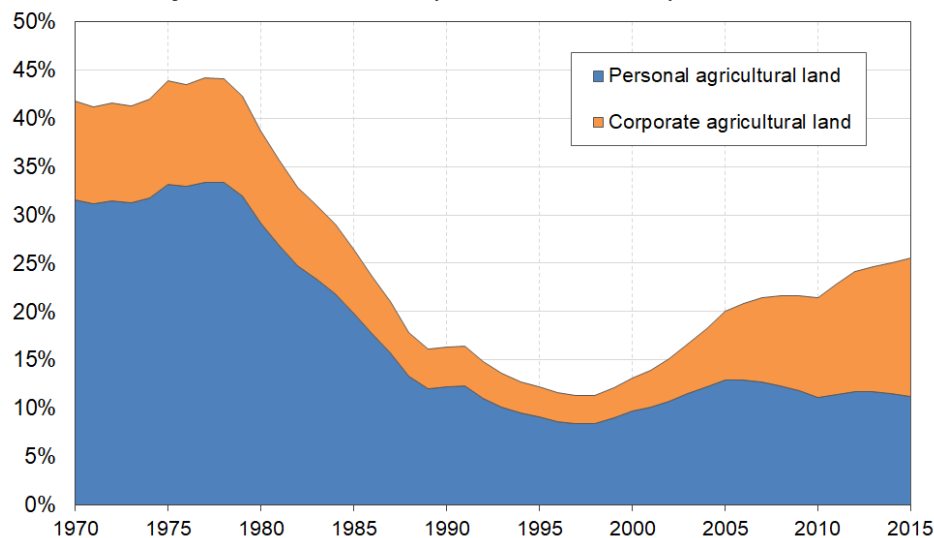


Figure 22. Germany: Net private wealth (% national income), 1970-2016

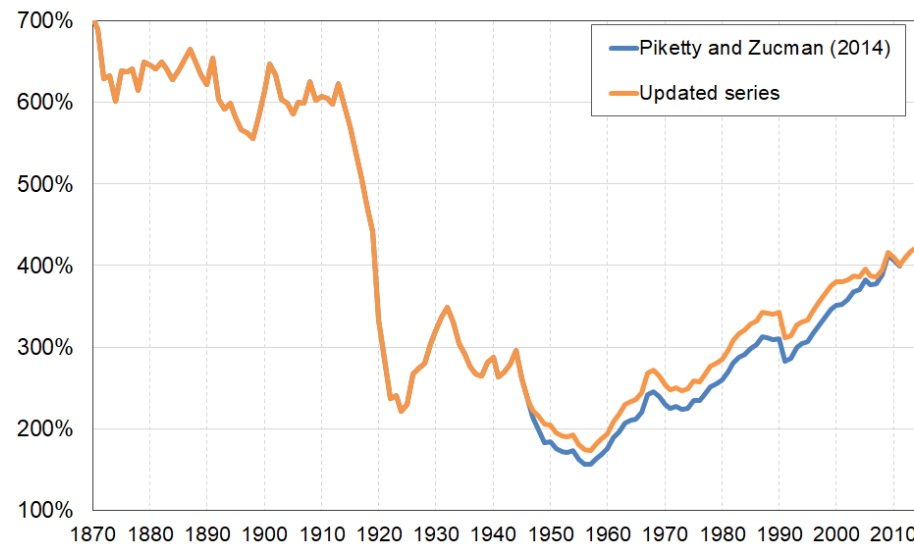


Figure 23. Germany: Net public wealth (% national income), 1870-2016

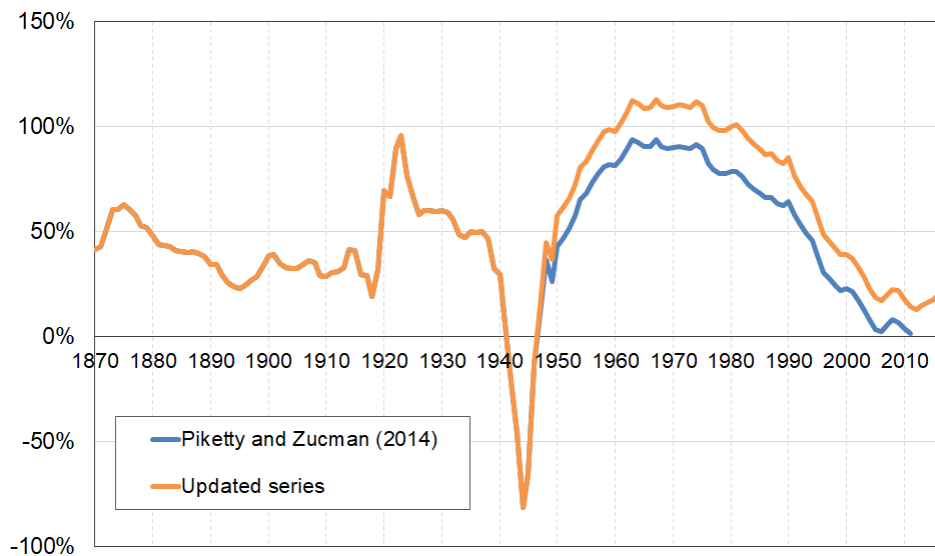


Figure 24. Germany: Tobin's equity Q (% national income), 1971-2016

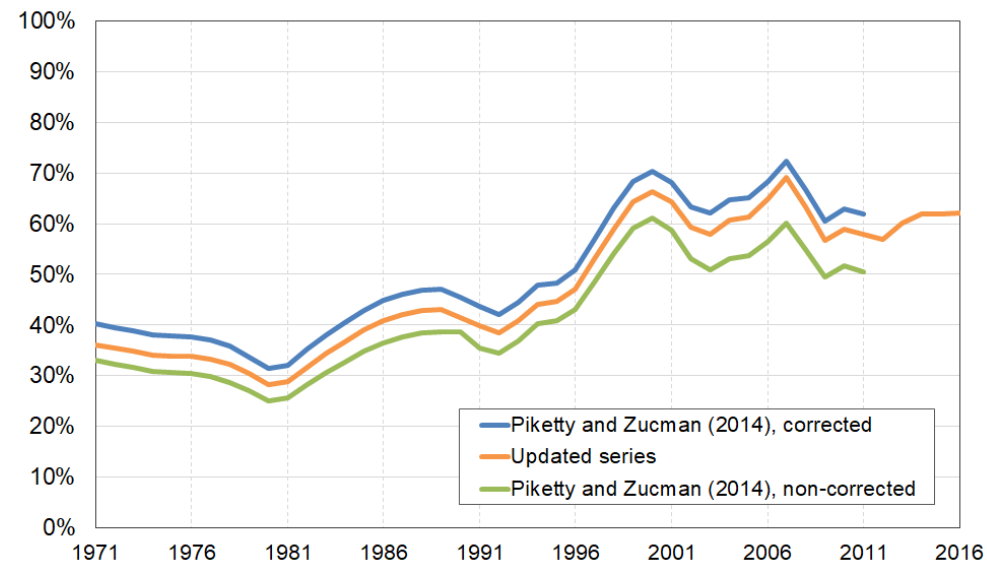


Figure 25. Germany: National housing: decomposition by institutional sector (% national income), 1970-2016

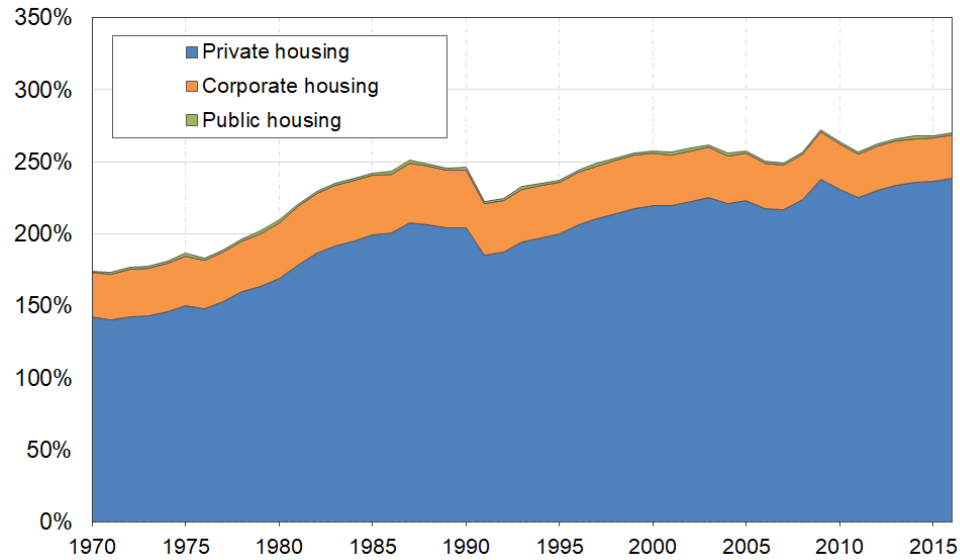


Figure 26. Germany: Private housing (% national income), 1950-2016

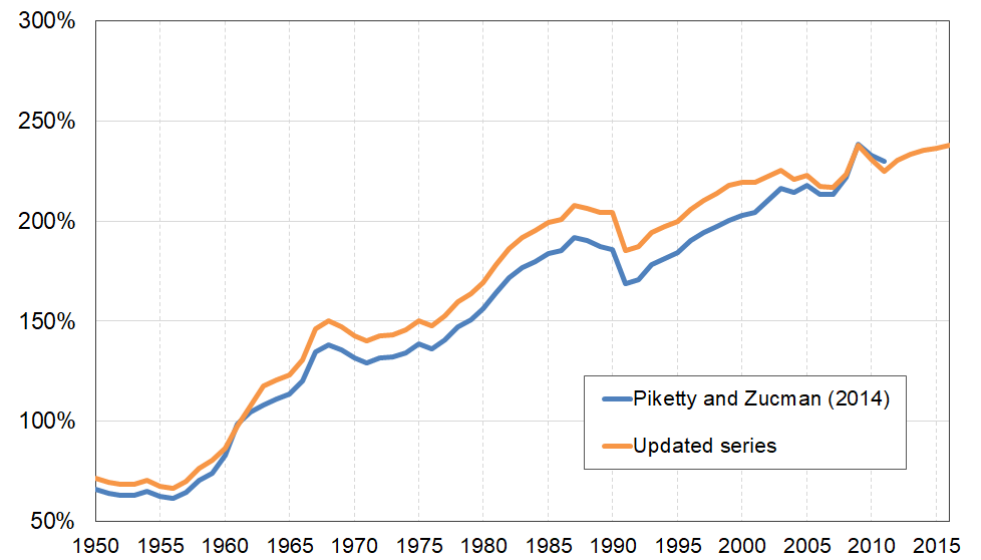


Figure 27. Germany. National agricultural land: decomposition by institutional sector (% national income), 1970-2016

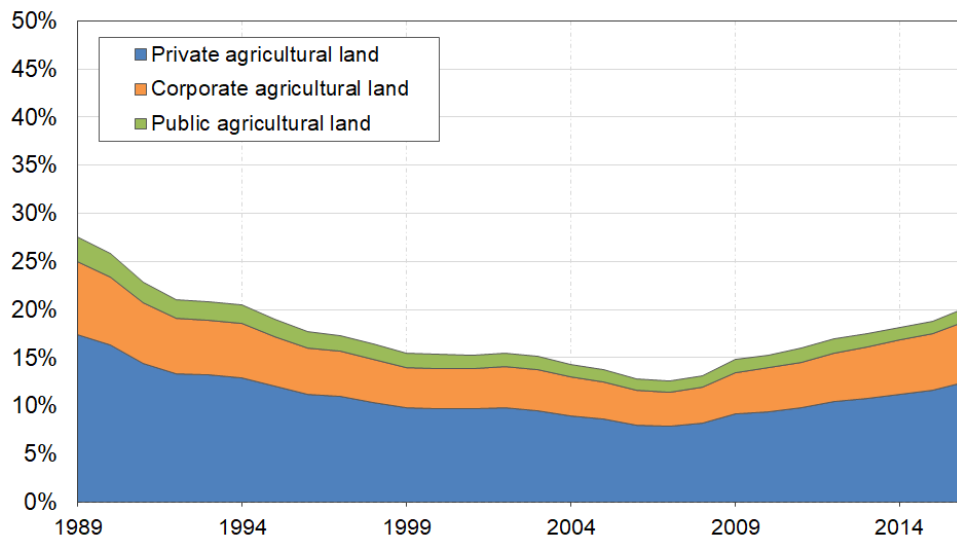


Figure 28. Italy: Net private wealth (% national income), 1970-2015

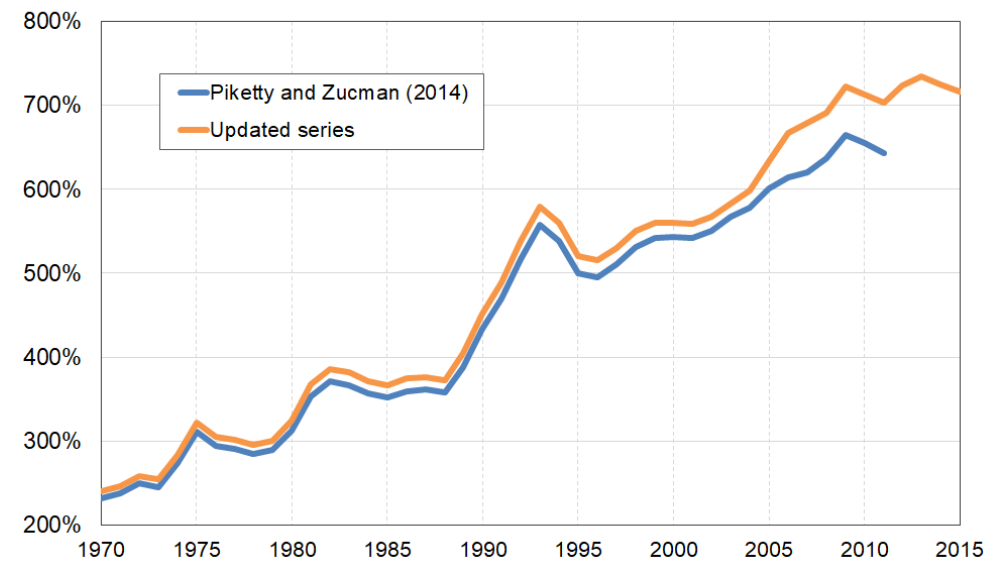


Figure 29. Italy: Net public wealth (% national income), 1970-2015

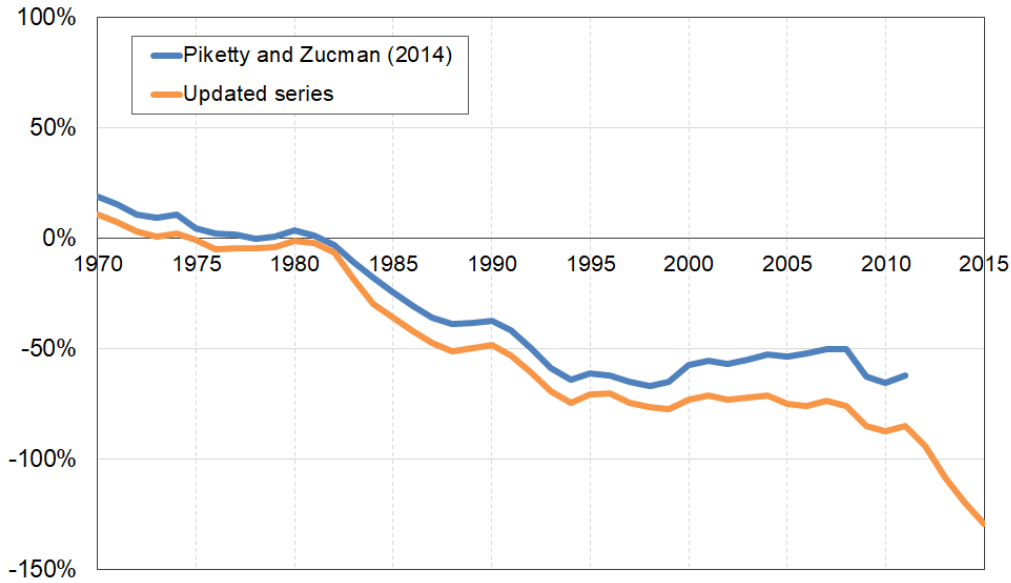


Figure 30. Italy: Tobin's 'equity' Q, 2006-2015

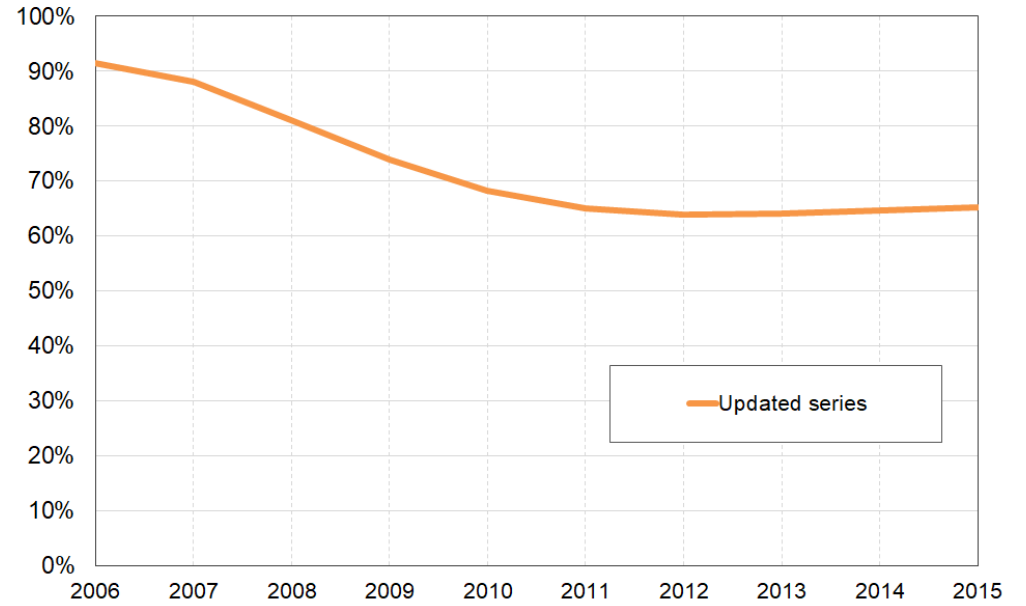


Figure 31. Italy. National housing: decomposition by institutional sector (% national income), 1970-2015

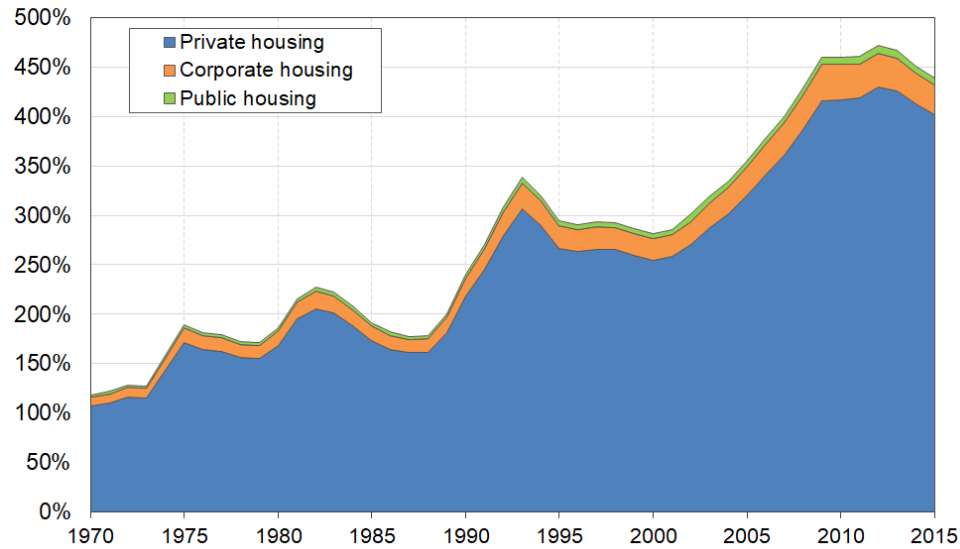
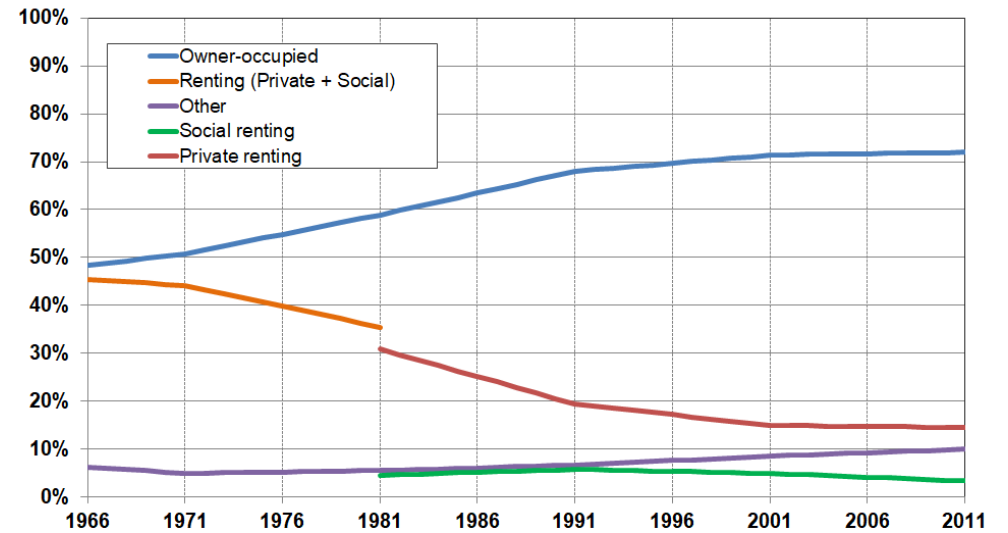


Figure 32. Italy. Principal residences by tenure (% total principal residences), 1966-2011



Sources: Own calculations using Baldini, M. (Ed.). (2012); ISTAT Italian Census 2011; Dol and Haffner (2010).

Figure 33. Japan: Net private wealth (% national income), 1970-2015

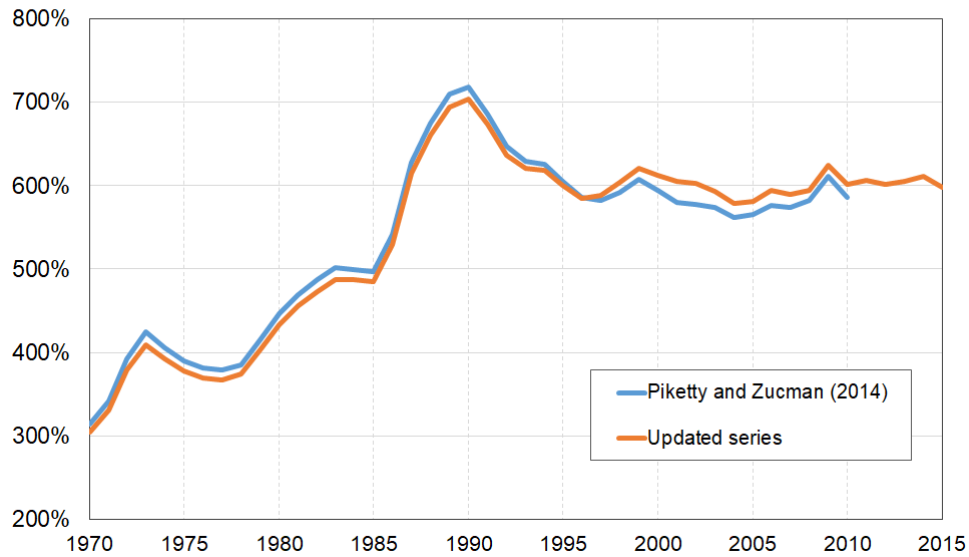


Figure 34. Japan: Net public wealth (% national income), 1970-2015

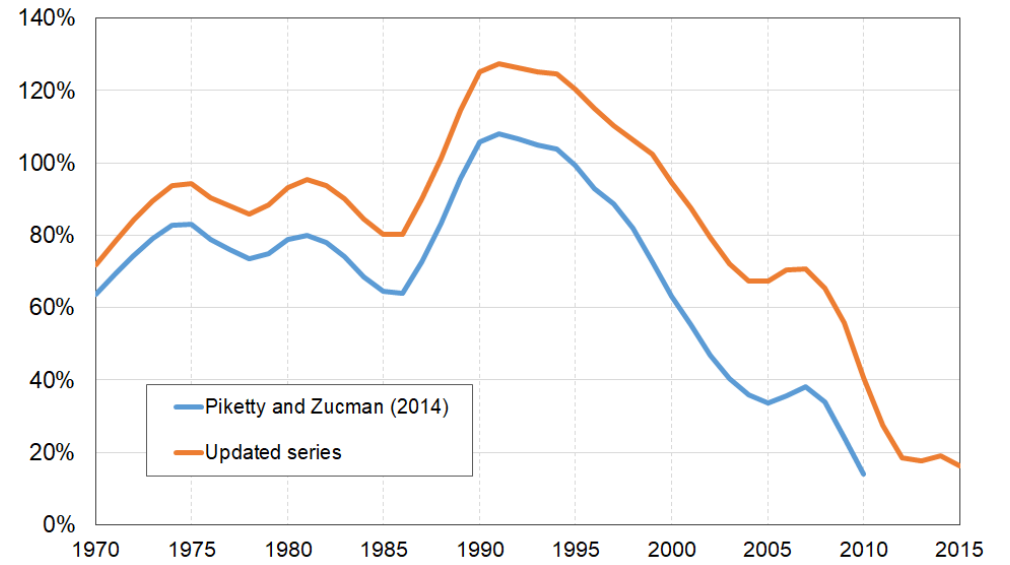


Figure 35. Japan: Tobin's 'equity' Q, 1970-2015

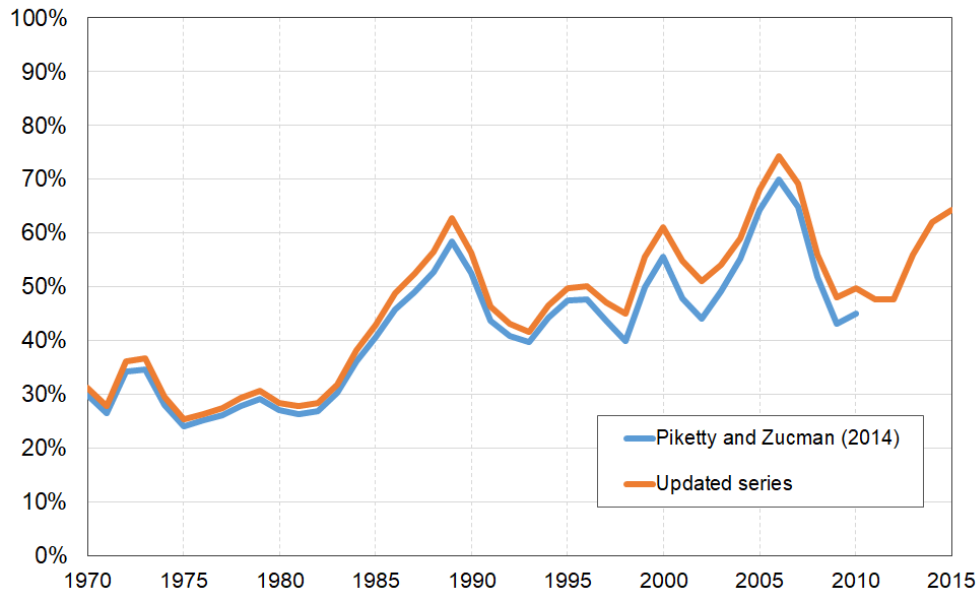


Figure 36. Japan. National housing: decomposition by institutional sector (% national income), 1970-2015

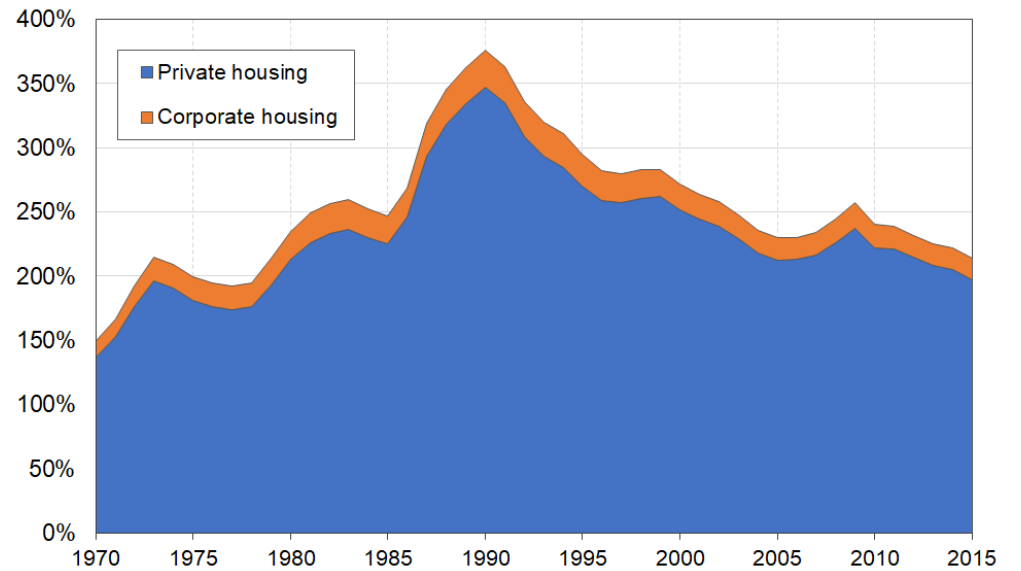


Figure 37. UK: Net private wealth (% national income), 1920-2015

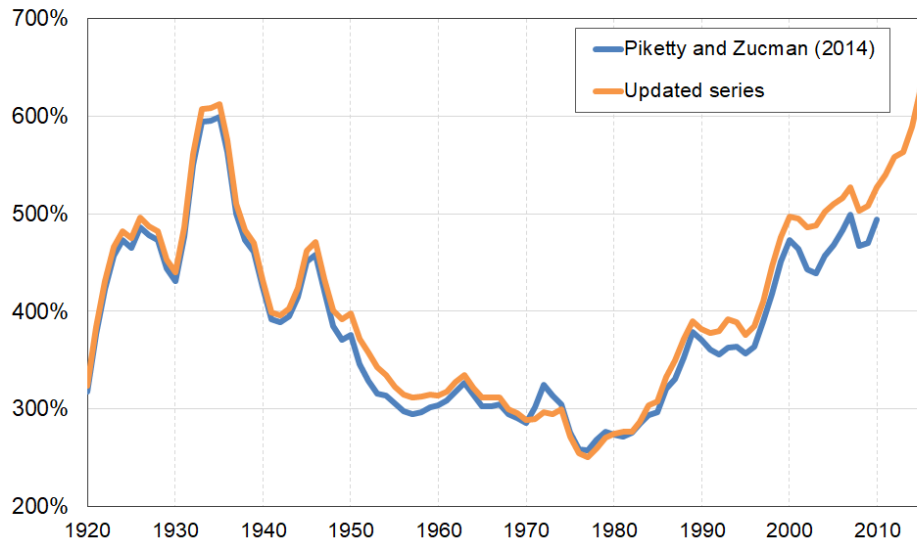


Figure 38. UK: Net public wealth (% national income), 1967-2015

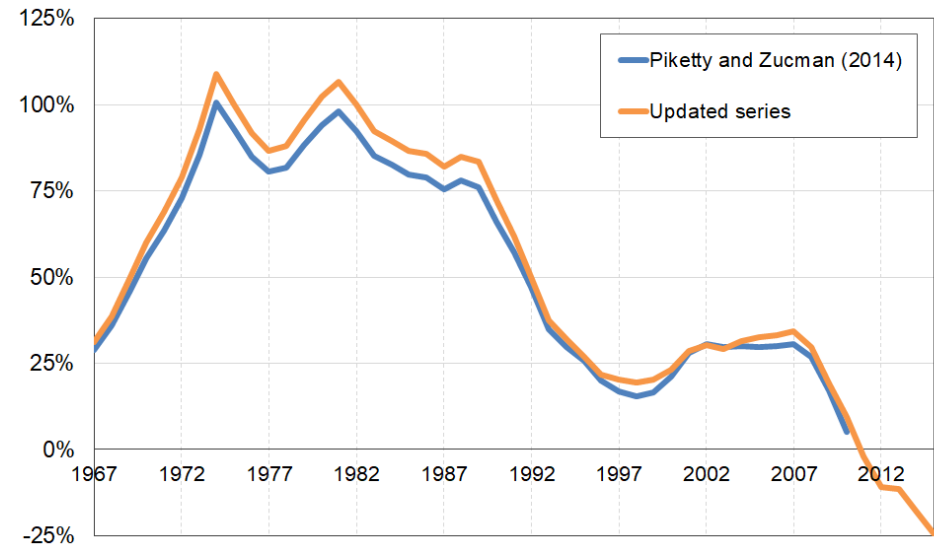


Figure 39. UK: Tobin's 'equity' Q, 1988-2015

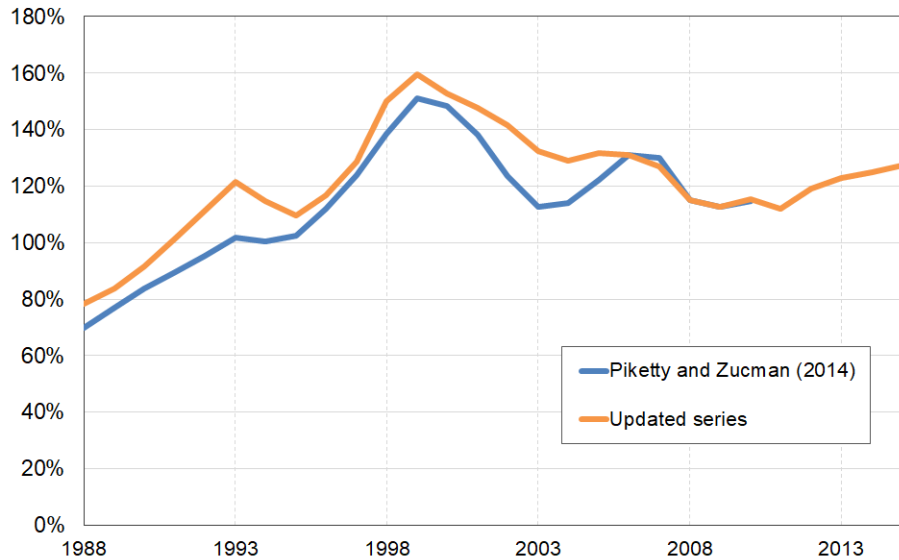


Figure 40. UK: National housing: decomposition by institutional sector (% national income), 1958-2015

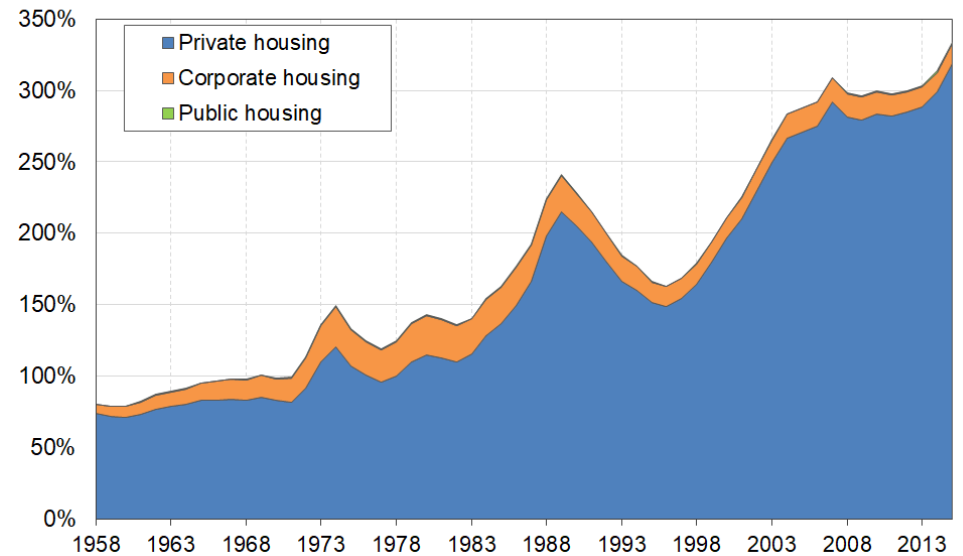


Figure 41. UK: Private housing (% national income), 1920-2015

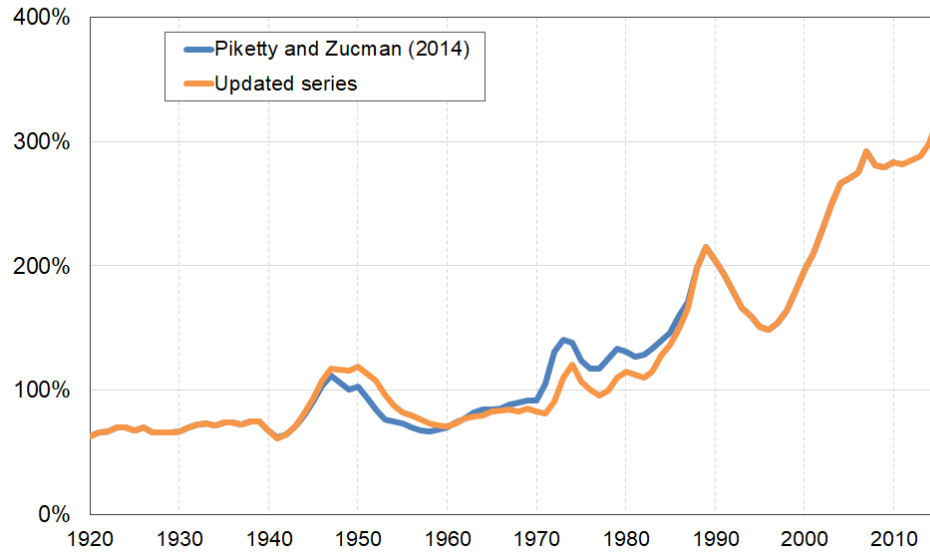


Figure 42. UK. Housing tenure types (% total dwellings), 1948-2014

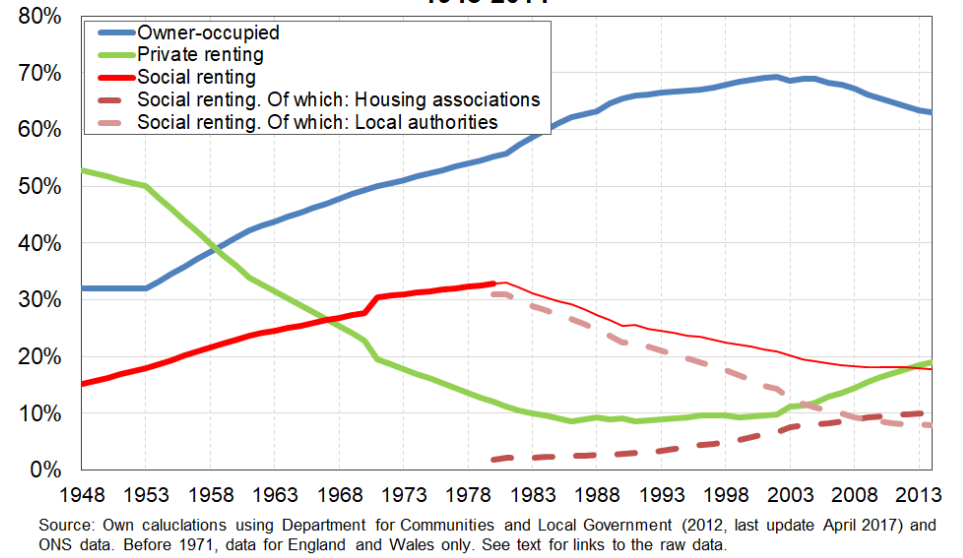


Figure 43. USA: Net private wealth (% national income), 1870-2015

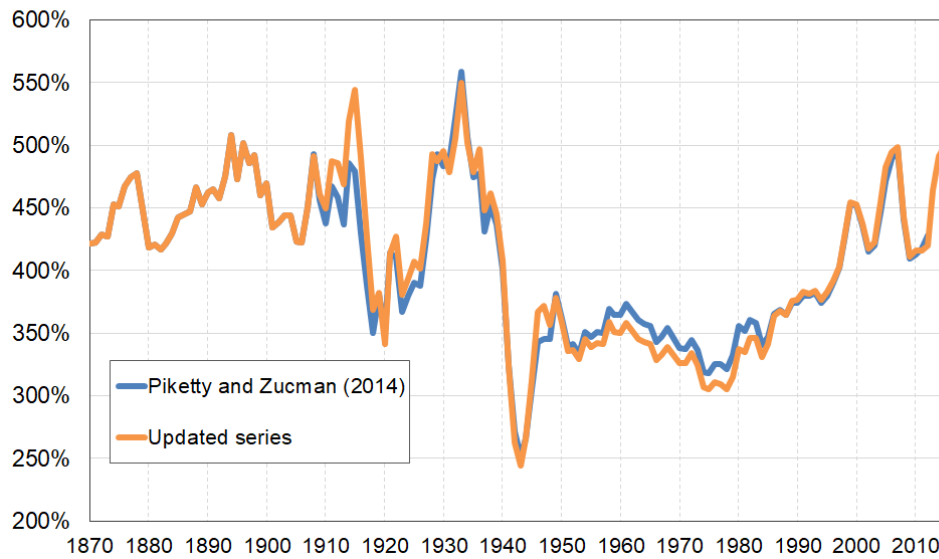


Figure 44. USA: Net public wealth (% national income), 1870-2015

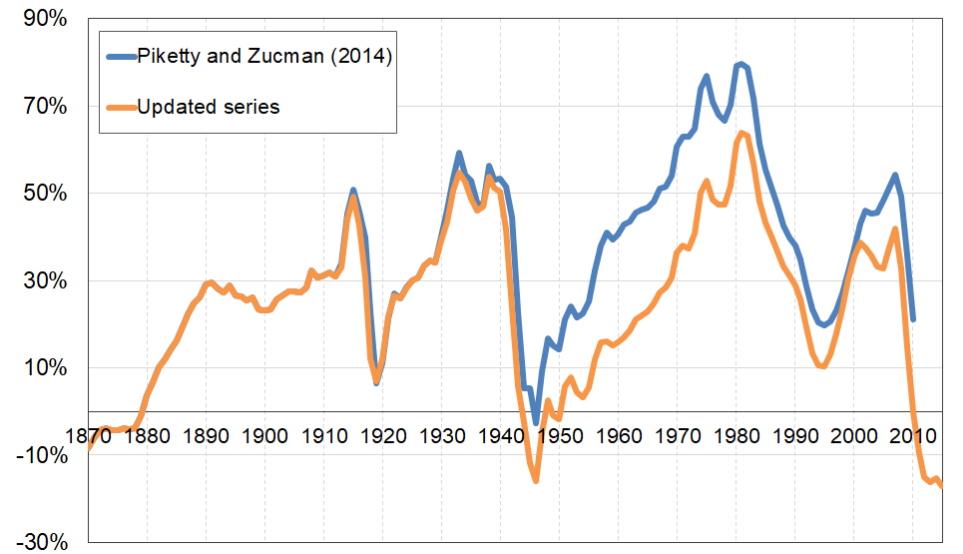


Figure 45. USA: Tobin's 'equity' Q, 1946-2015

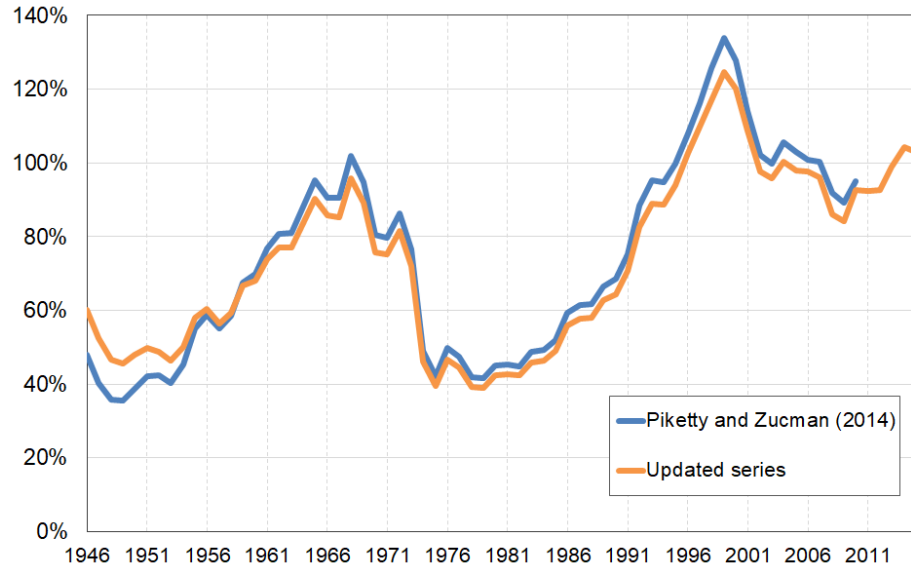


Figure 46. USA: National housing: decomposition by institutional sector (% national income), 1946-2015

