

# Income Inequality: Long Run Trends Overseas Departments of France & Mauritius

---

Yajna Govind

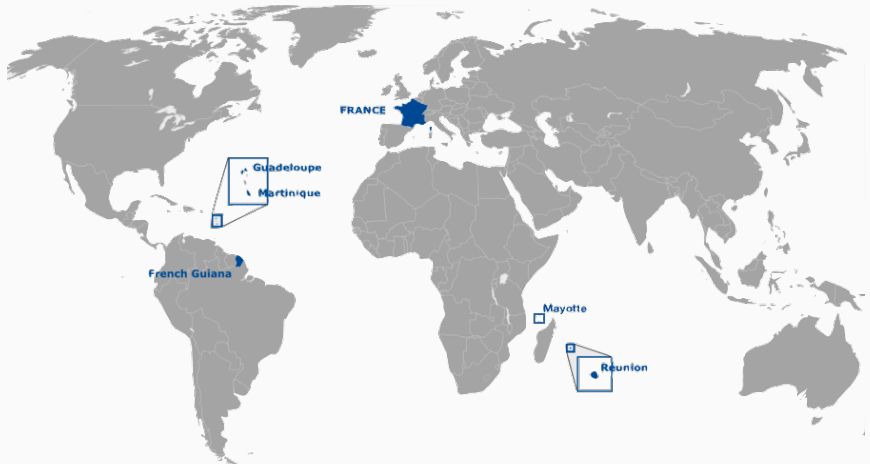
December 15, 2017

Paris School of Economics (PSE)

Institut National d'Etudes Démographiques (INED)



## Overseas Departments of France



# Motivation

---

# Motivation

Intriguing cases: Developing context within a highly developed nation

- Colonial history (Since 17<sup>th</sup> century) → Departmentalisation (1946)
- Ethnic Mix: White metropolitans, African ex-slaves, Indian labourers, Autochtones
- Economic and Social Division
- High relevance for France: historically, economically & politically
- DOM- Most unequal departments of France (INSEE)

# Motivation

Intriguing cases: Developing context within a highly developed nation

- Colonial history (Since 17<sup>th</sup> century) → Departmentalisation (1946)
- Ethnic Mix: White metropolitans, African ex-slaves, Indian labourers, Autochtones
- Economic and Social Division
- High relevance for France: historically, economically & politically
- DOM- Most unequal departments of France (INSEE)

*“ ...In 1945, all the inhabitants of the former empire wanted to become citizens and stop being subjects...[Departmentalisation] meant the **end of arbitrary rule, access to European salaries and social security...** By departmentalisation, what was sought, naively probably, but sincerely, was **equality of rights**. But France remained reluctant to enforce what it had voted for. I then realized that we had made a fool's deal, and that departmentalisation was nothing but a **new form of domination**. “*

—Aimé Césaire (1981)

## **Contribution**

- Collecting & building a database for DOM
- Long run trend of income inequality
- Comparative study: Martinique, Guadeloupe & La Réunion since the mid-1980s

## Contribution

- Collecting & building a database for DOM
- Long run trend of income inequality
- Comparative study: Martinique, Guadeloupe & La Réunion since the mid-1980s

## Results

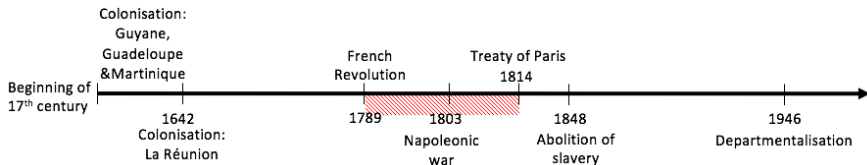
- Significant gap between the average income in Metropolitan France and the DOM and reduction over the period but still significant today
- Top Income Shares: Much higher top 10% shares but no significant difference in top 1% between France and DOM
- Lower bottom 50% shares

# Context

---



# Historical Context

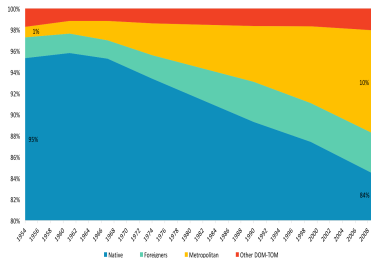


## Post-departmentalisation:

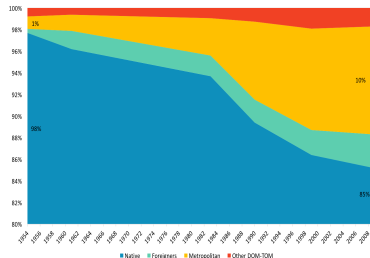
- Phases of Socio-economic development:
  1. **1950s - 1960s:** Addressing urgent sanitary and social situations
  2. **1960s - 1980s:** More focus on DOM-specificities & increased creation of public jobs
  3. **1980s-2000:** Increased effort to bring equality
    - Decentralisation of power: Regional Council in each DOM
    - Wider coverage of social benefits
    - Alignment of benefits to Metropolitan France: RMI, SMIC
- Public Wage Premium: sur-rémunérations: premium of 53.6% in La Réunion & 40% in Guadeloupe, Martinique and Guyane

# Population

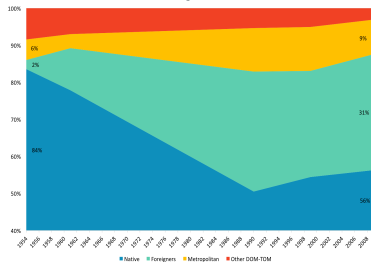
## Guadeloupe



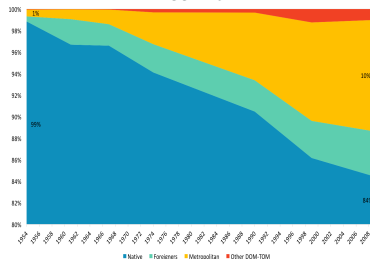
## Martinique



## Guyane



## Réunion



# Current Situation

- High Unemployment Rate Unemp Rate

	Metropolitan France	DOM
<b>Unemployment Rate</b>	10%	20 - 30%
<b>Youth Unemployment Rate (15-24 years)</b>	25%	Above 50%

- Lower HDI than Metropolitan France HDI

<b>DOM (2010)</b>	<b>HDI Level</b>
<b>La Réunion</b>	Same as France 1990
<b>Guadeloupe &amp; Martinique</b>	Below France 2000
<b>Guyane</b>	Below France 1990

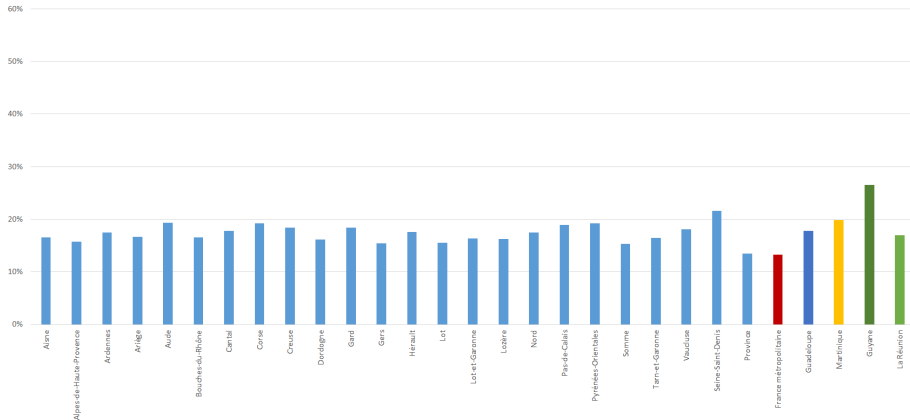
- High Poverty Rates

# Current Situation

## Poverty Rate

Poverty Rate (Based on Local Poverty Threshold for DOM)

Poverty Rate (2006)



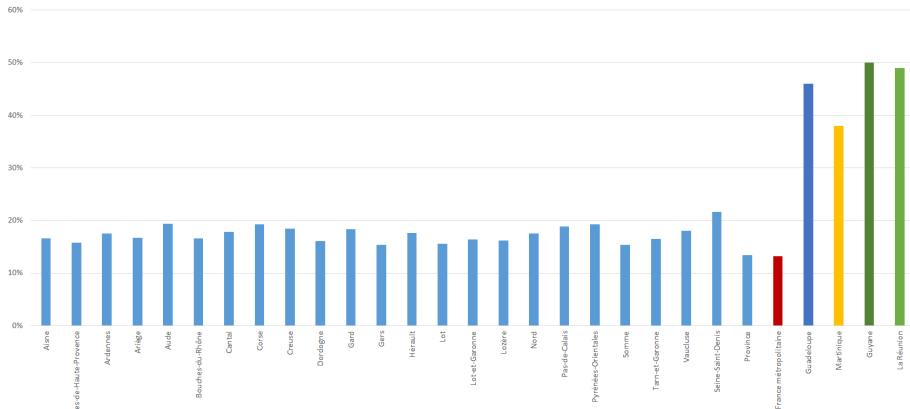
Source: INSEE

# Current Situation

## Poverty Rate

Using National Poverty Threshold: Extreme Poverty level All dept

Poverty Rate (2006)



Source: INSEE, Senat (INSEE, ISEE, ISPF, AFD)

# Data & Methodology

---

## Population Data

RP1954 - RP2014

## Income Data

Year	Source
1970 - 1994	INSEE (1997)
1990 - 2014	INSEE Online Database

## Taxation Data

Year	Source
1986 - 1998	Etats 1921 (Centre des Archives Economiques et Financières)
2000 - 2014	Direction Général des Finances Publiques (DGFIP)

- **Generalised Pareto Interpolation Technique-** Blanchet et al., (2017) as used in Garbinti et al., (2017)

- **Control Total for Population and Income**

The total population and income if all tax units declared their income

- i) **Control Total for Population**

Control Population = Adult Population - Number of married couples

- ii) **Control Total for Income**

Taxable Income = GDP - Non-household Income - Non-taxable items

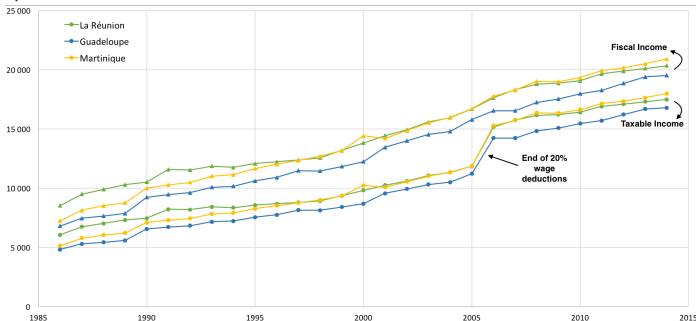


# Methodology

## Control Total for Income

**Taxable Income** → **Fiscal Income**: See Garbinti et al., (2017)

- i) 10% Lump-sum on professional expenses of wage earners
- ii) Additional 20% deduction on wage income (repealed in 2006)
- iii) Capital Gains



Source: Own estimations based on DGFIP data

Hence, unit of analysis is **Fiscal Income & Tax Units**

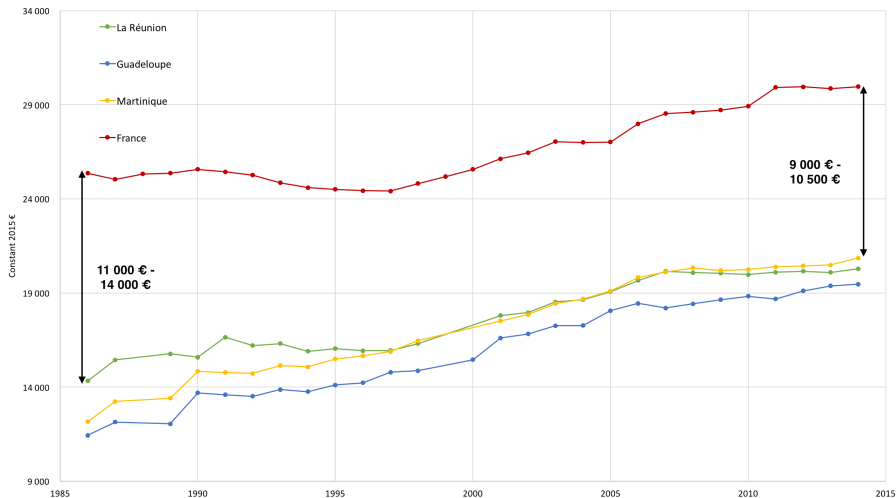
# Results

---

# Results

## Average Fiscal Income

### Average Fiscal Income

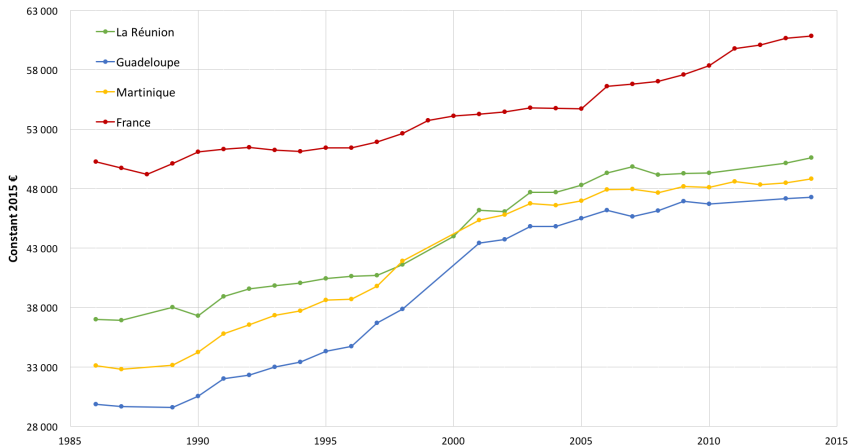


Source: Own estimations based on National Income data (INSEE) and Garbinti et al (2017) for France

# Results

## P90-100 Threshold

### P90-100 Income Threshold

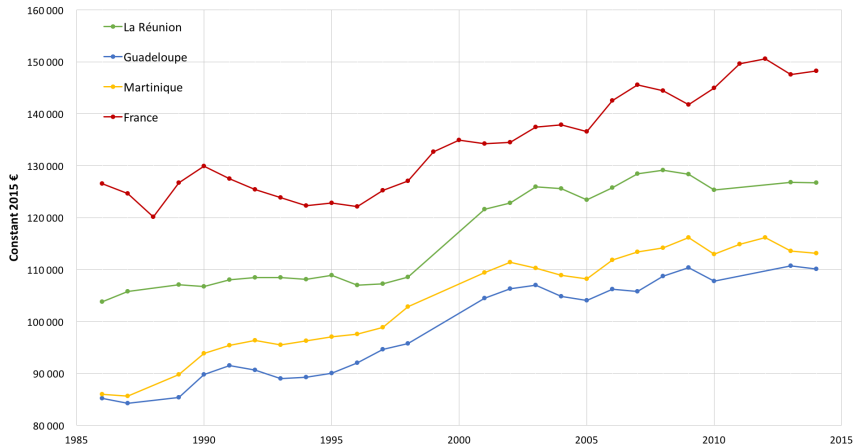


Source: Own estimations based on DGFIP data and Garbinti et al (2017) for France

# Results

## P99-100 Threshold

### P99-100 Income Threshold

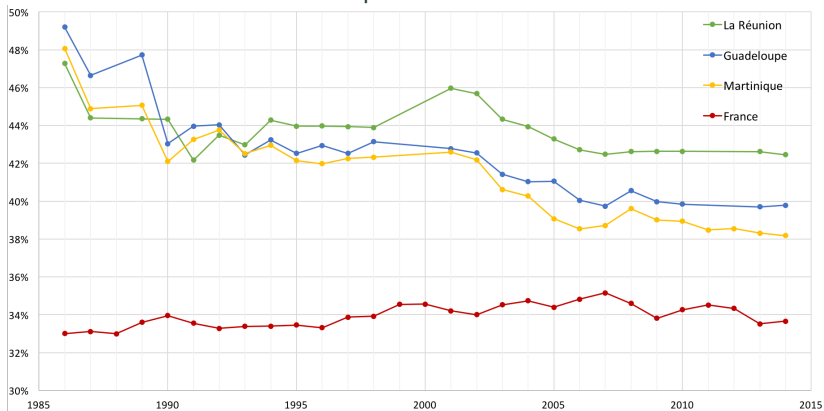


Source: Own estimations based on DGFIP data and Garbinti et al (2017) for France

# Main Results

## Top Income Shares

### Top 10% Share

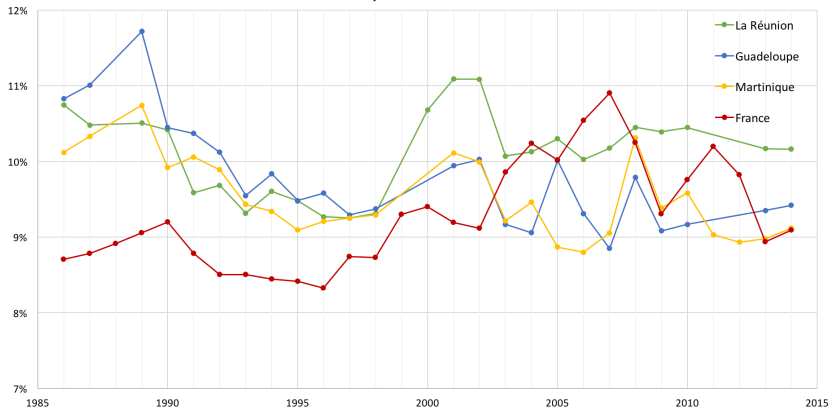


Source: Own estimations based on DGFIP data and Garbinti et al (2017) for France

# Main Results

## Top Income Shares

### Top 1% Share

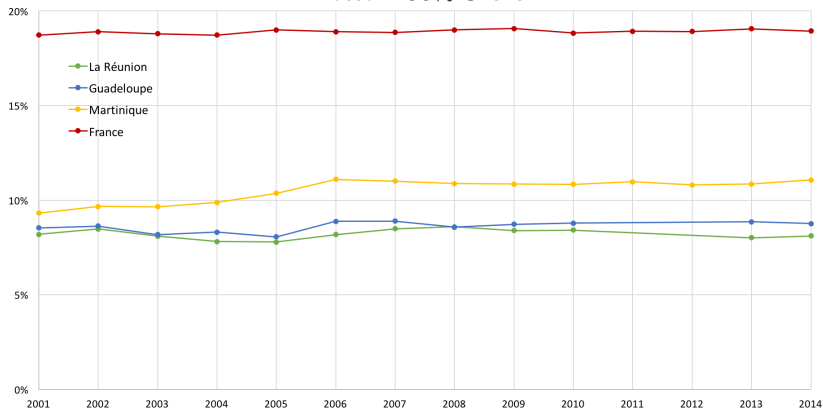


Source: Own estimations based on DGFIP data and Garbinti et al (2017) for France

# Main Results

## Bottom Income Shares

### Bottom 50% Share



Source: Own estimations based on DGFIP data and Garbinti et al (2017) for France





# Plausible Explanation

---

# Interpretations

## High Top Income shares in DOM

### Bottom of the distribution

- High unemployment rate: 20 - 30%
- Lower minimum wage than Metropolitan France prior to 1996

### Upper end of the distribution

- Civil servants wages + Premium
- Private sector high-income earners

## Conclusion

---

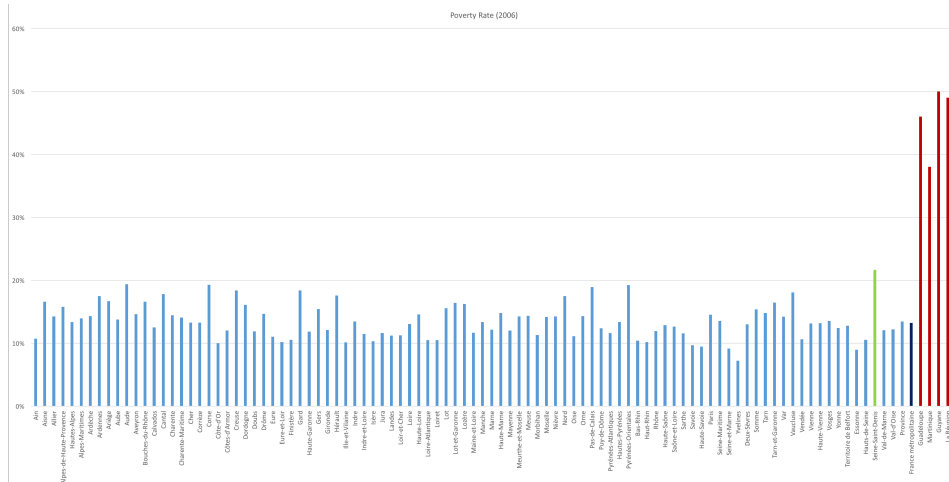
# Appendix

---

# Poverty Rates

## Poverty Rate (2006)

Poverty Rate (2006)



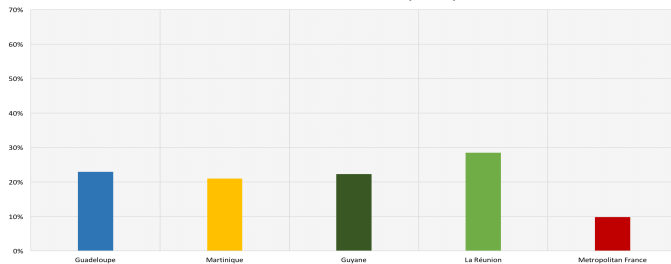
Source: INSEE

Back

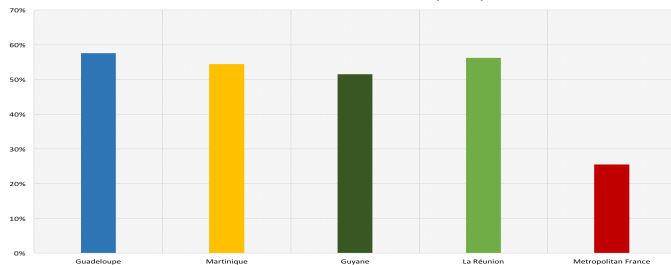
# Current Situation

## Unemployment Rate

Unemployment Rate (2012)



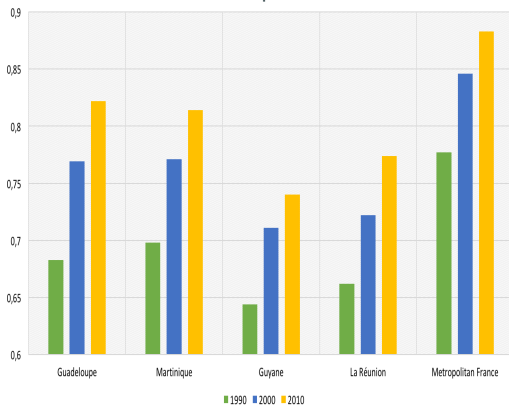
Youth Unemployment Rate (2012)



# Current Situation

## Human Development Index

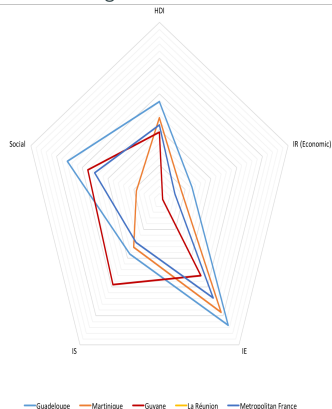
Human Development Index



Source: AFD (2012)

Back

HDI Progress 1990-2010



Source: Own estimation based on AFD (2012)