

TOWARDS TAX JUSTICE AND WEALTH REDISTRIBUTION IN INDIA: PROPOSALS BASED ON LATEST INEQUALITY ESTIMATES

NITIN KUMAR BHARTI
LUCAS CHANCEL
THOMAS PIKETTY
ANMOL SOMANCHI

ISSUE BRIEF N°2024/01

MAY 2024

WORLD
INEQUALITY
..... LAB



Towards Tax Justice & Wealth Redistribution in India: Proposals based on latest inequality estimates *

Nitin Kumar Bharti¹, Lucas Chancel², Thomas Piketty³, and Anmol Somanchi⁴

¹ New York University, Abu Dhabi and World Inequality Lab

² Sciences Po, Harvard Kennedy School, and World Inequality Lab

³ EHESS, Paris School of Economics, and World Inequality Lab

⁴ Paris School of Economics and World Inequality Lab

May 24, 2024

Abstract

Income and wealth inequality in India have reached historical highs under the Billionaire Raj. These extreme inequalities and their close link with social injustices can no longer be ignored. To tackle concentration at the very top of the distribution and create valuable fiscal space for crucial social sector investments, we propose a comprehensive wealth tax package on the ultra-rich. Such proposals could deliver phenomenally large tax revenues while leaving 99.96% of the adults unaffected by the tax. We show that this would entail support to the poor, lower castes, and middle classes, to the detriment of only a minuscule number of ultra-wealthy upper-caste families.

Key words: India, inequality, caste, redistribution, wealth tax, inheritance tax

* We are very grateful to Aashish Gupta for clarifications regarding age structures and mortality rates, Resuf Ahmed for support with the 'outkast' algorithm, and Ravi for assistance in manual coding of caste surnames using publicly available sources. **Emails:** Bharti: nkb2039@nyuad.edu; Chancel: lucas.chancel@sciencespo.fr; Piketty: thomas.piketty@psemail.eu; Somanchi: anmol.somanchi@psemail.eu.

Debates on income and wealth inequality in India have gained significant momentum over the past few weeks, in small part following the release of our study “*Income and Wealth Inequality in India, 1922-2023: The Rise of the Billionaire Raj*” which revealed that economic disparities in India have reached historical highs (Bharti et al., 2024a). Public discussions that followed have focused, among other things, on the lack of transparency of wealth statistics, on the types of policies fit to deal with rising inequality, and on the specific nature of the Indian context, where income and wealth inequality are closely intertwined with caste injustices.

In this brief follow-up note, we discuss the relevance and robustness of our results in the context of shortages of official economic statistics. Mobilizing our novel estimates, we then provide concrete wealth tax and redistribution proposals to curb extreme inequality in India and create valuable fiscal space for ramping up crucial social sector investments. Lastly, we show that such redistributive proposals would essentially entail support to the poor, lower castes, and middle classes, to the detriment of very few ultra-wealthy upper caste families.

1 Inequality at highest levels on record

Combining income tax tabulations, survey data (consumption, income, and wealth), national accounts, and rich lists in a consistent framework, we construct long-run income and wealth inequality estimates for India. In our study, *incomes* refer to annual flows earned from individuals’ labor or flows generated by capital they own (e.g. rent, dividends, interests or retained earnings). These are measured before income taxes, i.e. pre-tax incomes. *Wealth* refers to stocks, that is the market value of assets owned by individuals (such as housing, equity or directly owned businesses) net of any debt. We briefly summarize our methodological approach here and direct readers interested in further details to the full paper.

For the income series, given that income and consumption surveys do not capture the rich very well, we supplement them with tax tabulations published by the income tax authorities.¹ Despite certain inherent issues with tax data (eg. compliance or non-taxable components), it proves to be the most reliable source to study incomes of the rich. The availability of tax tabulations going all the way back to 1922 (when the British administration passed the Income Tax Act) allows us to shed light on the dynamics of very top incomes (top 1%) over an entire century. Given strong growth of tax filing in recent decades, the tax data now covers nearly 10% of adults in recent years. For the rest of the distribution, we rely on consumption expenditure surveys that have been conducted at regular intervals by the National Sample Survey Organization (NSSO). To move from a consumption

¹ There are numerous reasons for the non-coverage of the rich and wealthy in surveys. Besides the fact that the rich are often more likely to refuse to respond to such surveys (‘differential non-response’), usual surveys most often fail to include the ultra-rich in their samples simply owing to their miniscule numbers. Consequently, inequality estimates generated from survey data alone – a common practice in the Indian context - are likely to severely underestimate the true extent of economic disparities.

distribution to an income distribution, we construe a mapping between them based on data from two rounds of the India Human Development Survey (IHDS).

On the other hand, our wealth series begins in 1961 when the NSSO began conducting the All-India Debt and Investment Survey (AIDIS) to track household assets and liabilities. Much like the income series, and for the very same reasons, we top-correct AIDIS using Forbes billionaire lists. Published annually by the Forbes magazine, these lists track all individuals with net wealth exceeding USD 1 billion at market exchange rate. In the absence of any administrative data, such rich lists (see also the one published by Hurun since 2012) have turned out to be a valuable source of information on the net worth of the wealthiest Indians. How do we use this Forbes data? We first fit a Pareto distribution to the billionaire list and then use the estimated tail parameter to estimate wealth for the top 0.5% of the distribution (top 0.1% in earlier years).² In effect, we assume that the bottom 99.5% of the distribution is well represented by the AIDIS. As we highlight in our paper, this is most likely a conservative assumption as the AIDIS has been performing worse over time in terms of capturing the very wealthy, consistent with the results in [Anand and Kumar \(2023\)](#). Nevertheless, given the limited coverage of the Forbes billionaire lists, we restrict ourselves to only correcting the AIDIS for the top 0.5% of the wealth distribution in recent years.

What do we find? Overall, income and wealth inequality declined post-independence, began rising in the 1980s and has skyrocketed since the 2000s. Between 2014-15 and 2022-23, the rise of top-end inequality has been particularly pronounced in terms of wealth concentration (see [Figure 1](#)). India's top 1% income and wealth shares are now at their highest historical levels. More precisely, the top 1% control over 40% of total wealth in India, up from 12.5% in 1980. The top 1% income earners made 22.6% of total pre-tax income, up from 7.3% in 1980. This spectacular rise of inequality makes the "Billionaire Raj" headed by India's modern bourgeoisie more unequal than the British Raj headed by the colonialist forces. It also squarely places India among the most unequal countries in the world.

According to our latest estimates, it takes just 2.9 lakhs per year to make it to the top 10% of income earners and 20.7 lakhs to make it to the top 1%. By contrast, the median adult earns only around 1 lakh, while the poorest of the poor have virtually no incomes. The bottom half of the distribution (50% of the population) earns only 15% of the total national income (see [Table 1](#)). To get a sense of just how skewed the income distribution is, one would have to be very close to the 90th percentile to earn the average income.

Looking at wealth, we find that an adult needs to own 21 lakhs to belong to the wealthiest 10% and 82 lakhs to break into the top 1%. The median adult holds about 4.3 lakh worth of wealth. A significant

² The 'tail parameter' in a Pareto distribution can be thought of as capturing the extent of inequality. Given the power law property of such distributions, we can use the tail parameter to estimate the full distribution after a certain threshold, 99.5% in our case - see [Appendix D \(pg. 83-84\)](#) in [Bharti et al. \(2024a\)](#) for further details. Note that till 2017, we only top-correct AIDIS for the top 0.1%. However, owing to the growing non-coverage of the very wealthy in AIDIS over time, we reduced the threshold slightly and corrected the top 0.5% from 2018 (latest AIDIS) onwards.

share of adults own close to no wealth at all. The bottom 50% of the population holds only 6.4% of the total wealth (see Table 2). On the other hand, we observe extreme concentration at the very top with shockingly high top shares. The top 1% owns 40.1% of the total wealth, the top 0.1% hold 30%, the top 0.01% own 22%, and finally, a whopping 17% is controlled by the top 0.001% alone. In other words, the total wealth of the top 0.001% (fewer than 10,000 persons) is nearly 3 times the total wealth held by the entire bottom 50% (46 crore individuals). Please pause, if need be, to let that sink in.

2 Critiques don't pass the bar: inequality denial in action

In [Bharti et al. \(2024a\)](#), we repeatedly stress that our estimates should be interpreted with care given the current lack of good quality economic statistics in India, especially for the last decade. At the same time, we argue that our method combines the best available data sources in a consistent framework to capture long-run trends of economic inequality in India. Moreover, our benchmark estimates are plausibly conservative in the sense that we might be underestimating the true extent of income and wealth concentration in recent years. For instance, we are unable to account for offshore wealth when estimating the wealth distribution. We know, however, that over 1% of India's GDP worth of wealth is parked by Indians as offshore assets in Dubai alone ([Alstadsæter et al., 2024](#)). Further, Indians account for over 20% of all foreign-owned real estate in Dubai ([Alstadsæter et al., 2022](#)). These strongly indicate that we are likely under-estimating wealth at the top of the distribution.

A handful of commentators, many with close links to the current government, have criticized these findings in the media.³ We have already dealt with these criticisms in detail arguing that they amount to nothing more than a broader strategy of “inequality denialism” in action ([Bharti et al., 2024b](#)). More precisely, after carefully reviewing these articles, we found little constructive criticism but plenty of misrepresentation and misunderstanding. The authors pick one element irrelevant to our inequality estimates and use it out-of-context to cast doubt over our general results which are hard to discredit. The objective of these criticisms is clear: deflect and avoid a much-needed debate on the ballooning inequality crisis and policies suited to tackle it.

Nonetheless, given that the quality of economic statistics in India is not great, there is no doubt our inequality series can be improved upon with better and more transparent data. In that regard, proposals aimed at carefully measuring economic and social inequalities, for example via a socio-economic caste census, are welcome steps in the right direction. In the meantime, however, we think our estimates can already provide a reliable basis for informed discussions about fair taxation and redistribution in India.

³ Among others, see [Bhalla and Bhasin \(2024\)](#) and [Nageswaran and Bisht \(2024\)](#) for the shrillest critiques. A more recent and intriguing criticism levelled against us is that, by highlighting income inequality in contemporary India is worse than under the British Raj, we are in effect “whitewashing colonial cruelties” ([Singh, 2024](#)). We stress once again that political power, poverty, and economic inequality are connected although separate challenges. We direct readers to in-depth work by some of us on these important matters ([Piketty, 2020](#)).

3 Progressive wealth tax to finance redistribution

Global historical evidence suggests that the wealthy usually manage to earn significantly higher returns on their capital stocks than the growth rate of the economy (Piketty, 2014; Piketty and Zucman, 2014; Jordà et al., 2019). Under a broad class of economic models, if left unchecked, such dynamics lead to greater concentration of wealth (Benhabib and Bisin, 2018). Worryingly, we find exactly these dynamics playing out in India. Between 2014 and 2022, growth rates at the very top of the distribution - the top 0.1%, top 0.01%, and beyond – far outstripped growth in the middle and bottom of the distribution (Bharti et al., 2024a, Figure 17b).

To fight these growing inequalities and create fiscal space for crucial social sector investments, we propose a tax justice package comprising of an annual wealth tax and an inheritance tax. Much has been written about the possible pros and cons of such taxes and the debate must continue. Given the extreme concentration of wealth at the very top, coupled with deeply rooted caste inequities, we believe such policies would be an important step towards a more equitable growth path for India.⁴ The two components of the package are meant to be complementary to each other. An inheritance tax would directly tackle the unfair advantage that unearned dynastic wealth renders to individuals solely based on the accident of birth. This is only exacerbated by the caste system. An inheritance tax, however, only comes into force when wealth is bequeathed (i.e. upon the death of the dynast) and hence delivers relatively small tax revenues on an annual basis. On the other hand, a small wealth tax would deliver significant annual revenues (given the larger base) while also dampening accumulation at the very top.

3.1 A “crorepati” tax justice plan leaving 99.96% of the population untouched

At the outset, we emphasize that our proposals involve taxing only the very wealthy. We recommend that these taxes kick-in only for those with net wealth exceeding INR 10 crores in 2022-23 - roughly EUR 3.4 million at purchasing power parity (PPP) or EUR 1.2 million at market exchange rates (MER). Based on our latest estimates (see Table 2), only the top 0.04% of adults would fall above this threshold. Table 3 presents a summary of three possible variants of a tax justice package, that we refer to as the ‘baseline’, ‘moderate’, and ‘ambitious’ variants.

In the baseline variant, we propose a 2% annual tax on net wealth exceeding 10 crore and a 33% inheritance tax on estates exceeding 10 crores in valuation. As per our estimates, this alone would generate a massive 2.7% of gross domestic product (GDP) in revenues. Under the moderate and ambitious variants, we introduce further progressivity in the tax schedules along with increase in tax rates. In the moderate variant, for instance, we propose increasing the marginal wealth tax rate from 2% to 4% for net wealth exceeding INR 100 crores. This would be coupled with a 33% inheritance

⁴ Among others, see Drèze (2024), Ghosh (2024), Moharir and Narayanan (2024), and Ramakumar (2024) for a spirited defence of such proposals.

tax on estates between INR 10 and 100 crore and a 45% tax on estates exceeding INR 100 crores. This would yield 4.6% of GDP in annual tax revenues. Under the ambitious package, with identical thresholds but higher tax rates (3%-5% for wealth tax and 45%-55% for inheritances), tax revenues could be as large as 6.1% of GDP.

The magnitude of potential revenues from such proposals is phenomenally large despite taxing only 0.04% of the adults, that is, leaving 99.96% of the population unaffected by the tax. What makes this possible? The *extreme* concentration of wealth at the very top. The top 0.04% (i.e. roughly those with net wealth exceeding INR 10 crore) alone hold over a quarter of the total wealth. Their total wealth amounts to a whopping 125% of India's GDP. In other words, the total wealth of the top 0.04% is 25% larger than India's entire economy. It is then no surprise that a flat 2% wealth tax on just the top 0.04%, as in the baseline variant, could alone yield nearly 2.5% of GDP in revenues. While we stress that these numbers should be interpreted with care, the orders of magnitude are likely to be largely robust.⁵

At this point it is worth clarifying that we strongly believe the exact specifics of such a tax package – exemption thresholds, degree of progressivity, tax rates, inflation indexation, etc. – should emerge from a broader democratic debate. By illustrating the broad design contours and the quantum of potential revenues, our proposals are meant to provide a concrete basis for further discussion and debate on tax justice and wealth redistribution in India.

3.2 Fiscal space for public expenditure on health and education

While progressive wealth taxation should be an important part of the fight against extreme inequality, it is not going to be enough. It must be accompanied by explicit re-distributive policies. Besides more direct measures like cash transfers to the poor, this could take the form of increased investment in health, education, and other social sector spending. Between 2008 and 2019, the total government expenditure (Centre and States) on health as a percentage of GDP remained stagnant around 1.4% of GDP, after which it saw a slight up-tick in the aftermath of the COVID-19 pandemic (Figure 2). Education expenditures have more-or-less stagnated at 2.9% of GDP for the last 15 years. Moreover, it appears that only a minority of this education expenditure is borne by the Central government (Centre for Budget Governance and Accountability, 2024). These levels are far below – less than half – the 6% target laid out in the government's own National Education Policy 2020 (NEP 2020).

If the average Indian is to truly benefit from the ongoing wave of hyper-globalization, there is an urgent need to ramp up broad-based investments in health, education, and nutrition that benefit the

⁵ These estimates assume that such taxes would have relatively muted effects on reporting and migration. Recent credible evidence from the Scandinavian context suggests "... a one percentage point increase in the average wealth tax rate on the top 2% decreases the stock of wealthy taxpayers by at most 2% in the long run, and lead to a reduction of at most .03% in aggregate employment and at most .1% in aggregate value-added. Hence, our results suggest that trickle-down effects of tax-induced migration by the wealthy do exist, but that they are quantitatively small" (Jakobsen et al., 2024). It of course remains to be seen whether these results apply fully to the Indian context.

masses and not just the elites. Combining our estimates of potential tax revenues with estimates of government expenditures, we find that wealth tax packages of the kind proposed here would create significant fiscal space to expand social sector expenditure (see Table 4). For instance, the baseline variant alone would allow nearly doubling the current public education expenditure while the moderate variant would allow nearly doubling the *combined* health and education budget (or more than tripling the health expenditure alone). The ambitious variant would allow doubling the government's combined budget on health and education and still leave plenty extra. As should be evident from these estimates, the magnitudes of potential tax revenues are truly quite large while those likely to be affected by the taxes truly quite few (top 0.04% only).

4 Wealth inequality, caste, and redistribution

An undeniably unique feature of economic inequalities in India is that they are closely intertwined with the deeply rooted caste system. Yet, even after 75 years of India's independence, we do not have a carefully quantified understanding of the interplay between economic and caste inequities. Nonetheless, we try to shed some light on this crucial issue using the available data sources.

To begin with, we code the surnames appearing in the Forbes billionaire rankings into four major caste categories: scheduled caste (SC), scheduled tribe (ST), other backward classes (OBC), and upper castes (UC).⁶ The annual Forbes rankings track all individuals with net wealth exceeding USD 1 billion at market exchange rates. We find that a large chunk - nearly 90% - of the billionaire wealth in 2022-23 is held by UCs (Figure 3). At the other end of the spectrum, STs find absolutely no representation among the wealthiest Indians. OBCs own a little less than 10% of the billionaire wealth while SCs only a meagre 2.6%. Not surprisingly, this suggests that UCs are significantly over-represented among the ultra-wealthy. Interestingly, during the Modi years between 2014 and 2022, the OBC share in billionaire wealth fell from 20% to below 10% while the UC share rose from 80% to 90%.

Next, we combine the caste-coded Forbes billionaire data with the All-India Debt and Investment Survey (AIDIS) for the year 2018-19 (latest year when AIDIS is available). This allows us to estimate the full distribution of wealth and allocate it across the four major caste groups. Compared to a population share of just over 25%, UCs own nearly 55% of national wealth – the only caste group whose wealth share exceeds its population share (Figure 4). On the other hand, the wealth share of SCs and STs is well below half their respective population shares. OBCs hold just under 35% of national wealth, about three-quarters of their population share.

All in all, Figures 3 and 4 suggest that UCs hold a significantly disproportionate share of national wealth, and that Indian billionaires are largely an upper caste club. This suggests that a progressive

⁶ We first manually coded the surnames appearing in the Forbes list using publicly available information sources like government notifications, news reports, etc. For some cases where ambiguity remained, we relied on the 'outkast' algorithm which relies on data from the 2011-12 Socio-Economic Caste Census to assign caste probabilities.

wealth tax package of the kind we propose is most likely to benefit lower castes and the middle classes at the detriment of only a tiny number of ultra-wealthy upper caste families. In that respect, besides addressing extreme wealth inequality, such taxes could also play a small role in weakening the rigid link between social and economic inequalities in India.

5 Conclusion

As per our benchmark estimates, India's top 1% income and wealth shares (22.6% and 40.1%) are at their highest historical levels on record, making the Billionaire Raj more unequal than the British Raj and squarely placing India among the most unequal countries in the world. There are various reasons to be opposed with such extreme concentration of economic resources. From a purely instrumental perspective, income inequality could even negatively affect medium and long-term growth prospects by dampening demand among the poor and middle-class. Widening disparities could also provide fertile ground for political and social unrest. Moreover, extreme concentration of resources is likely to facilitate disproportionate influence on government and society. Lastly, from an ethical and moral standpoint, is it just for a society to let the top 1% amass 40% of national wealth while child malnutrition remains a pressing concern?

In this short article, we have put forward a basic tax justice proposal as a way to fight these extreme inequalities and create fiscal space for enhanced social sector investments. Our proposals consist of an annual wealth tax and an inheritance tax, both applying only above a very high exemption threshold of INR 10 crores worth of net wealth. Based on our latest inequality estimates, we show that such a tax package, with low to moderate tax rates and progressivity, could earn anywhere between 2.5% - 5% of the GDP. These revenues could potentially be large enough to nearly double the combined public education and public health budgets, areas where India has invested too little compared to global standards. Finally, by caste-coding the Forbes billionaire lists and combining it with AIDIS, we show that such a tax package would effectively support the poor and lower and middle castes to the detriment of only a tiny fraction (top 0.04%) of largely ultra-wealthy upper caste households.

To those willing to objectively engage with reality, India's vulgar inequalities are staring back at us from all directions. The 2024 Lok Sabha election has presented itself as a unique moment when both the political elite and the electorate have actively engaged with these crucial issues. Despite sustained attempts from certain sections at derailing this much needed conversation, a vibrant public debate has nonetheless emerged. It would, however, be a shame if after coming this far, this momentum is not translated into policy. Progressive wealth taxation, effective redistribution, and broad-based social sector investments are going to be crucial for an equitable and prosperous India.

References

- Alstadsæter, A., Godar, S., Nicolaidis, P., and Zucman, G. (2024). “Global Tax Evasion Report 2024”. EU Tax Observatory.
- Alstadsæter, A., Planetrose, B., Zucman, G., and Økland, A. (2022). “Who Owns Off-Shore Real Estate? Evidence from Dubai”. EU Tax Observatory Working Paper No. 1.
- Anand, I. and Kumar, R. (2023). “The Sky and the Stratosphere: Wealth Concentration in India During the Last (Lost) Decade”. *Review of Income and Wealth*.
- Benhabib, J. and Bisin, A. (2018). “Skewed Wealth Distributions: Theory and Empirics”. *Journal of Economic Literature*, 56(4):1261–1291.
- Bhalla, S. S. and Bhasin, K. (2024). “The devil is in the footnote”. *The Indian Express*, 27 March.
- Bharti, N. K. and Chancel, L. (2019). “Tackling inequality in India: Is the 2019 election campaign up to the challenge?”. WID.world Issue Brief 2019/2.
- Bharti, N. K., Chancel, L., Piketty, T., and Somanchi, A. (2024a). “Income and Wealth Inequality in India, 1922-2023: The Rise of the Billionaire Raj”. WIL Working Paper 2024/09.
- Bharti, N. K., Chancel, L., Piketty, T., and Somanchi, A. (2024b). “Inequality denial starter kit”. *The Indian Express*, 15 April.
- Centre for Budget Governance and Accountability (2024). *Of Monies and Matters*. (New Delhi: CBGA).
- Drèze, J. (2024). “Who is afraid of redistribution?”. *Economic and Political Weekly*, 59(18).
- Ghosh, J. (2024). “Only the .001 per cent”. *Indian Express*, 2 May.
- Jakobsen, K., Kleven, H., Kolsrud, J., Landais, C., and Muñoz, M. (2024). “Taxing top wealth: Migration responses and their aggregate economic implications”. NBER Working Paper 32153.
- Jordà, O., Knoll, K., Kuvshinov, D., Schularick, M., and Taylor, A. M. (2019). “The rate of return on everything, 1870-2015”. *The Quarterly Journal of Economics*, 134(3):1225–1298.
- Moharir, A. and Narayanan, R. (2024). “An inheritance tax will help reduce inequality”. *The Hindu*.
- Nageswaran, V. A. and Bisht, D. S. (2024). “Ten reasons why Piketty’s paper gets it wrong on inequality in India”. *Livemint*, 27 March.
- Piketty, T. (2014). *Capital in the 21st Century*. (Cambridge MA: Harvard University Press).
- Piketty, T. (2020). *Capital and Ideology*. (Cambridge MA: Harvard University Press).
- Piketty, T. and Zucman, G. (2014). “Capital is Back: Wealth-Income Ratios in Rich Countries 1700-2010”. *The Quarterly Journal of Economics*, 129(3):1155–1210.
- Ramakumar, R. (2024). “Inheritance Taxes: A key step towards reducing inequality”. *Frontline*.
- Singh, P. (2024). “Colonial British Raj Versus Today’s Billionaire Raj: How Thomas Piketty Is Whitewashing Colonial Cruelty”. *Outlook*, 7 May.

Table 1: Income inequality in India, 2022-23

Income group	Adults	Income share (%)	Threshold (INR)	Average income (INR)	Ratio to average
Average	92,23,44,832	100.0	0	2,34,551	1.0
Bottom 50%	46,11,72,416	15.0	0	71,163	0.3
Middle 40%	36,89,37,933	27.3	1,05,413	165,273	0.7
Top 10%	9,22,34,483	57.7	2,90,848	13,52,985	5.8
Top 1%	92,23,448	22.6	20,73,846	53,00,549	22.6
<i>incl. Top 0.1%</i>	9,22,345	9.6	82,20,379	2,24,58,442	95.8
<i>incl. Top 0.01%</i>	92,234	4.3	3,46,06,044	10,18,14,669	434.1
<i>incl. Top 0.001%</i>	9,223	2.1	20,01,98,548	48,51,96,875	2,068.6

Source: Bharti et al. (2024a). INR values in current 2022-23 prices.

Table 2: Wealth inequality in India, 2022-23

Wealth group	Adults	Wealth share (%)	Threshold (INR)	Average wealth (INR)	Ratio to average
Average	92,23,44,832	100.0	-4,10,00,000	13,49,029	1.0
Bottom 50%	46,11,72,416	6.4	-4,10,00,000	1,73,184	0.1
Middle 40%	36,89,37,933	28.6	4,31,138	9,63,560	0.7
Top 10%	9,22,34,483	65.0	21,98,344	87,70,132	6.5
Top 1%	92,23,448	40.1	81,60,022	5,41,41,525	40.1
<i>incl. Top 0.1%</i>	9,22,345	29.7	5,26,17,860	40,04,54,807	296.8
<i>incl. Top 0.01%</i>	92,234	22.2	36,86,80,160	2,99,67,73,491	2,221.4
<i>incl. Top 0.001%</i>	9,223	16.8	2,75,66,99,904	22,61,33,54,928	16,762.7

Source: Bharti et al. (2024a). INR values in current 2022-23 prices.

Table 3: Tax justice proposals for India

	Baseline	Moderate	Ambitious
<i>Wealth tax</i>	2% on net wealth > 10 crores	2% on net wealth > 10 crores 4% on net wealth > 100 crores	3% on net wealth > 10 crores 5% on net wealth > 100 crores
<i>Inheritance tax</i>	33% on estates > 10 crores	33% on estates > 10 crores 45% on estates > 100 crores	45% on estates > 10 crores 55% on estates > 100 crores
Adults affected	Top 0.04 %	Top 0.04 %	Top 0.04 %
Annual tax revenues as a % of GDP (2022-23)			
<i>Wealth tax</i>	2.45	4.23	5.46
<i>Inheritance tax</i>	0.28	0.36	0.62
Total package	2.73	4.59	6.08

Note: (1) Average wealth in 2022-23 was INR 13.5 lakh (1.35 million). INR 10 crores convert to roughly EUR 3.4 million PPP or EUR 1.2 million at market exchange rate. (2) ‘Estates’ is used as a catch-all phrase for all classes of inherited wealth. (3) Revenue estimates from inheritance taxes are based on a crude death rate of 7 per 1000 persons. Given that the wealthy tend to be relatively older as a group (due to higher life expectancy), we might be *under-estimating* mortality among the wealthy, and consequently potential revenues too.

Sources: Authors’ estimates combining the wealth distribution for 2022-23 from [Bharti et al. \(2024a\)](#) and GDP estimates from Table 1.1, Statistical Appendix, Economic Survey 2022-23.

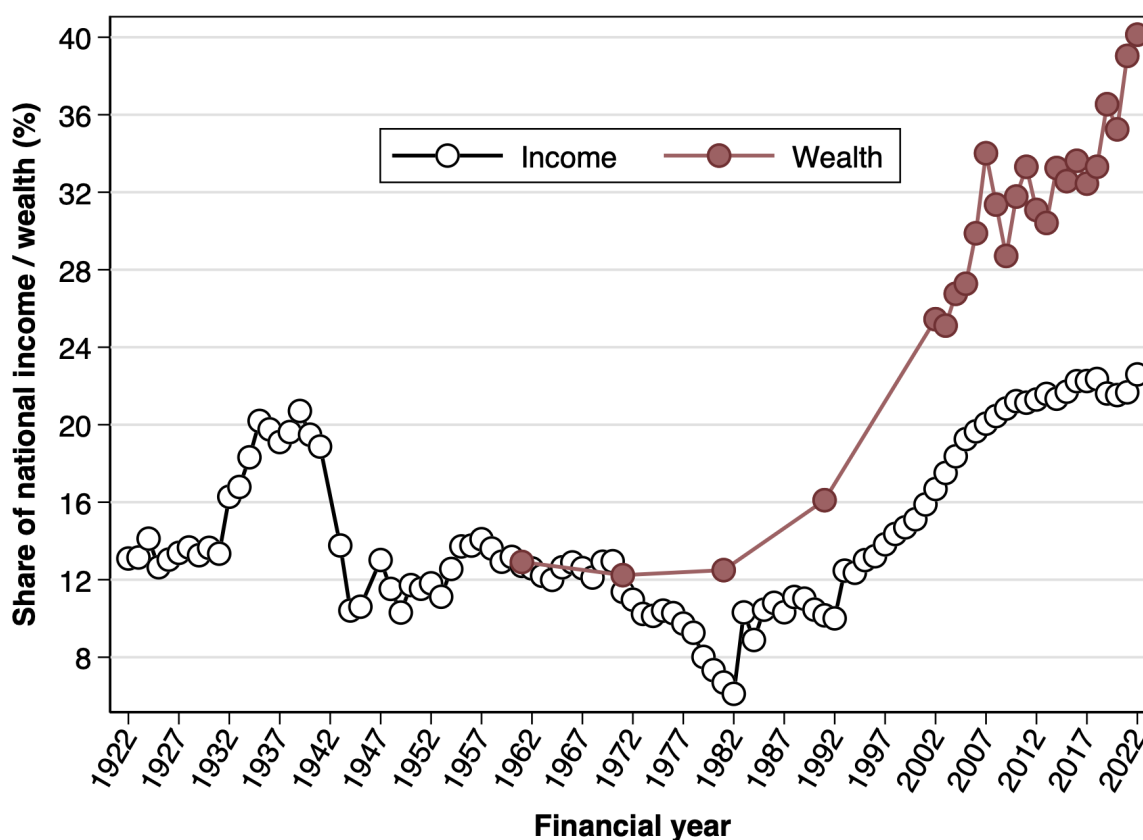
Table 4: Tax revenues as a percentage of key public expenditures, 2022-23

	Baseline	Moderate	Ambitious
Health	130%	218%	289%
Education	94%	158%	210%
Health + Education	55%	92%	122%

Note: (1) The table presents the potential revenues from the proposed tax justice packages as a percentage of government (Centre and States) expenditures on health and education. (2) Both tax revenues and government expenditures pertain to 2022-23.

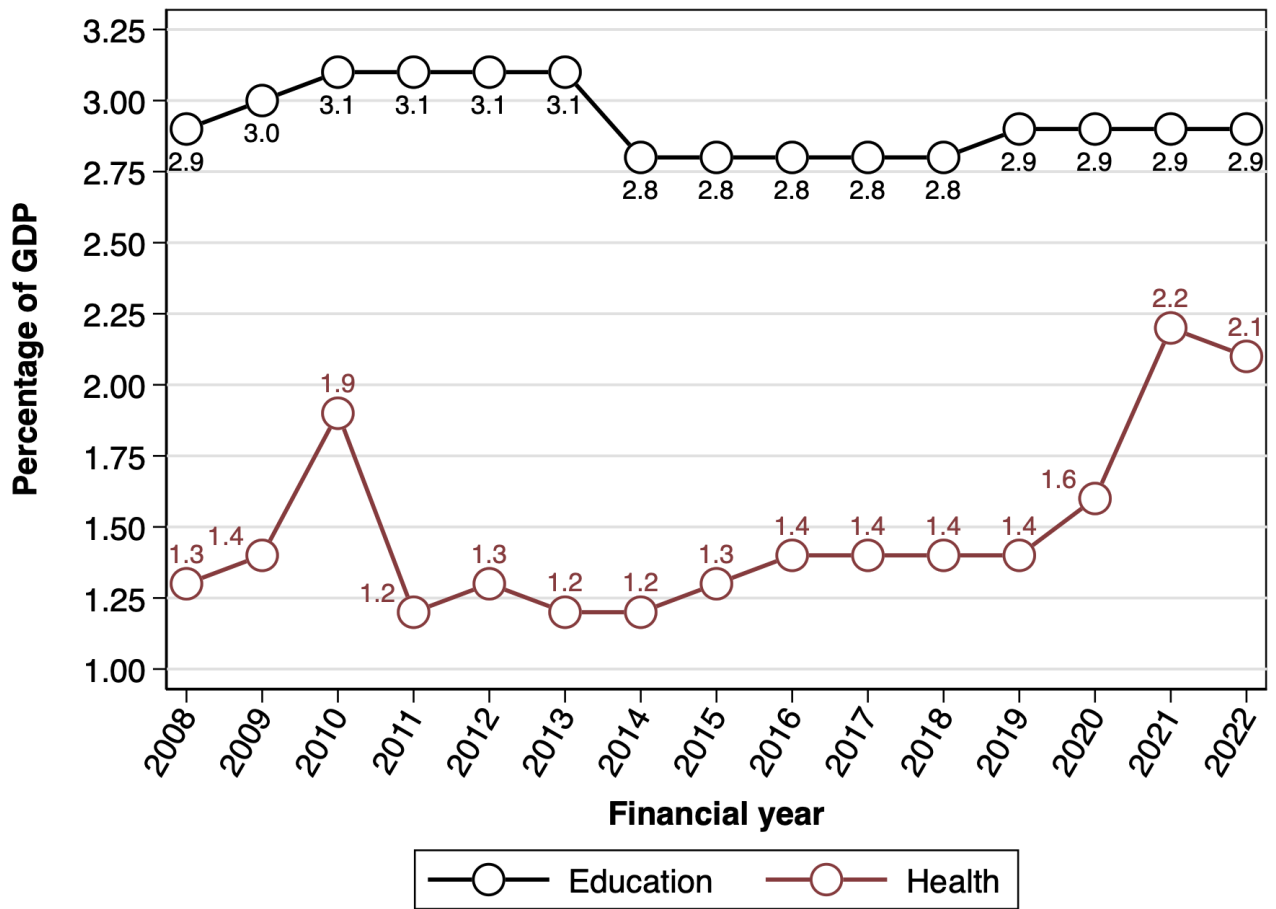
Sources: Authors' estimates combining tax revenue estimates from wealth tax packages (see Table 3) and government expenditures from Economic Survey 2022-23 (Chapter 6, Table VI.1).

Figure 1: The rise of extreme inequality - Top 1% shares



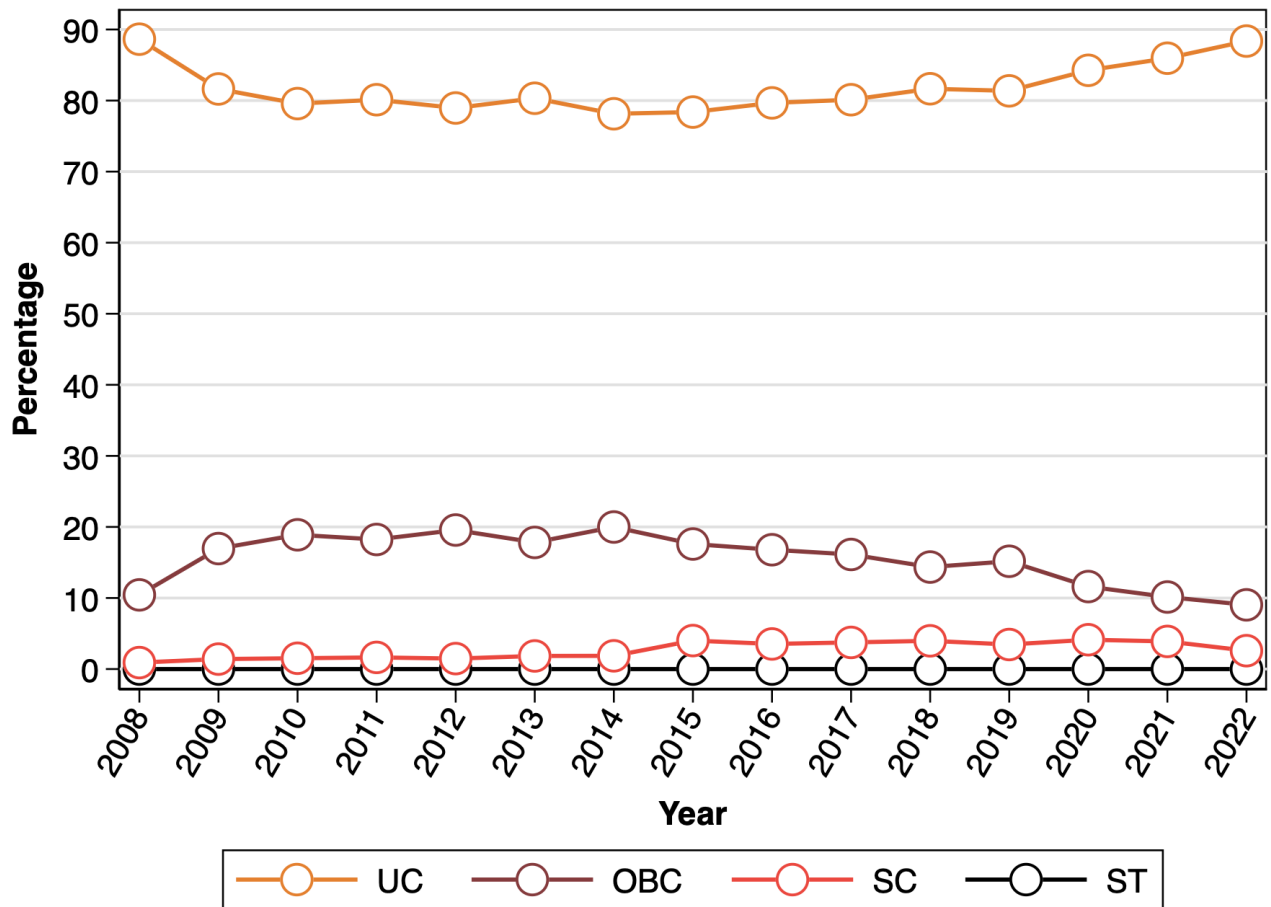
Source: [Bharti et al. \(2024a\)](#), Figure 13a.

Figure 2: Central & State government expenditures on health & education



Sources: Bharti and Chancel (2019) for pre-2014; Economic Survey 2022-23 for post-2014.

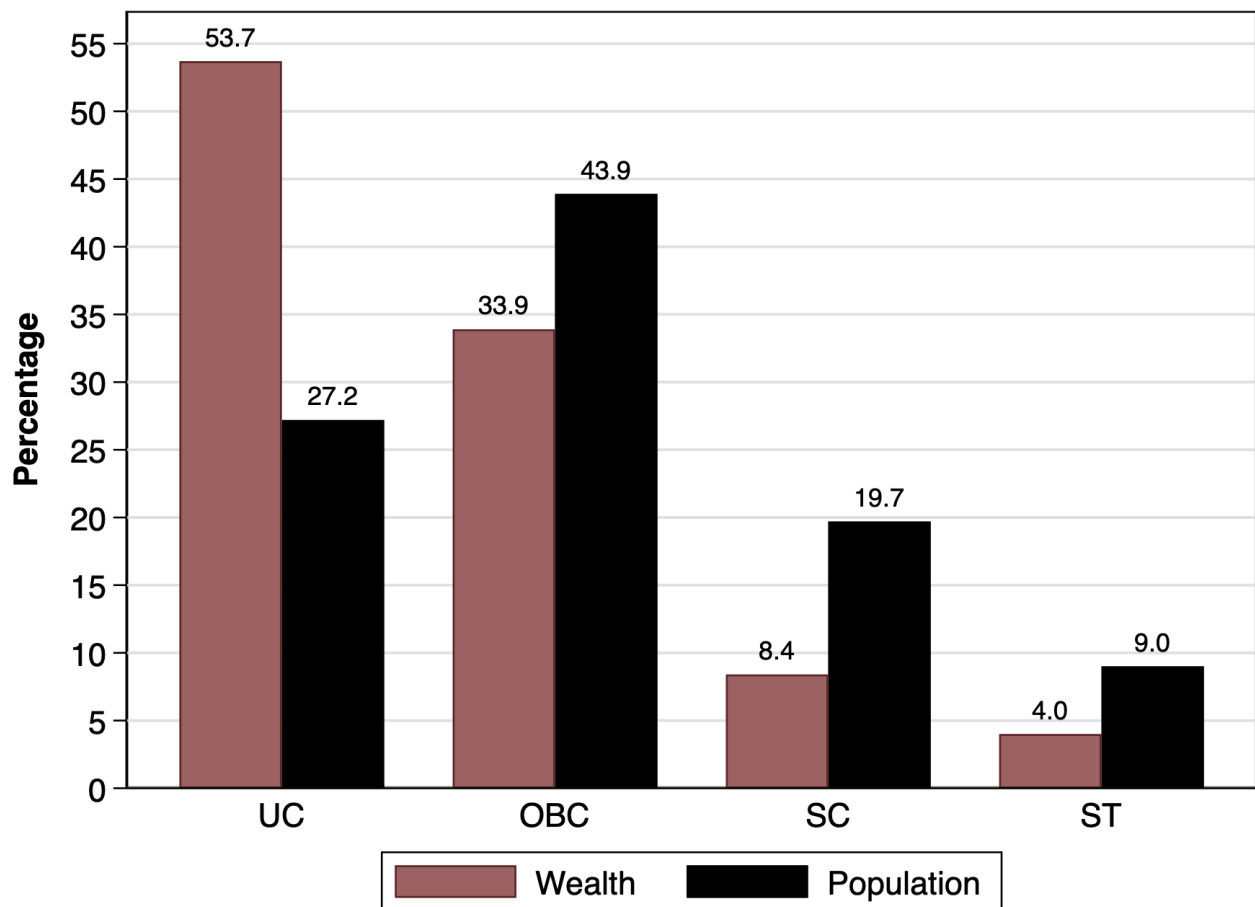
Figure 3: Caste-wise shares of total wealth in Forbes billionaire rankings



Note: (1) UC – Upper Caste; OBC – Other Backward Classes; SC – Scheduled Castes; ST – Scheduled Tribes. (2) While Forbes billionaire rankings are available since 1988, they covered too few individuals prior to 2008 to be used meaningfully for the purpose of allocating billionaire wealth across castes.

Sources: Authors’ estimates from caste-coding the Forbes billionaire lists.

Figure 4: Caste-wise shares of total wealth and population, 2018-19



Note: UC – Upper Caste; OBC – Other Backward Class; SC – Scheduled Castes; ST – Scheduled Tribes. As Figure 3 suggests, between 2018-19 (presented in this figure) and 2022-23, the UC share is likely to have only gone up further.

Sources: Authors’ estimates combining AIDIS and (manually caste-coded) Forbes billionaire list for wealth shares and PLFS 2018-19 unit-level data for population shares.