

GARBINTI-GOUPILLE-PIKETTY 2017

DINA APPENDIX DATA

This database supports our paper "Inequality Dynamics in France, 1900-2014: Eviden from Distributional National Accounts"

Appendix C: Detailed DINA series using tax micro-files (1970-2014)

Last update: May 12th, 2017

Appendix C Figures

Income shares

Figure C1. Income shares: tabulations vs micro-files (tax units, fiscal income excl. cap.gains)

Figure C2. Top shares: tabulations vs micro-files (tax units, fiscal income excl. cap.gains)

Figure C3. Income shares: tabulations vs micro-files (equal-split individuals, fiscal income excl. cap.gains)

Figure C4. Income shares: fiscal income vs national income (micro-files, equal-split individuals, fiscal income excl. cap.gains vs pre-tax national income)

Figure C5. Top shares: fiscal income vs national income (micro-files, equal-split individuals, fiscal income excl. cap.gains vs pre-tax national income)

Income composition by year

Figure C20: Income composition by income level, France 1970

Figure C21: Income composition by income level, France 1984

Figure C22: Income composition by income level, France 2000

Figure C23: Income composition by income level, France 2012

Income composition by income groups

Figure C24: Composition of Bottom 50% income (% pre-tax national income)

Figure C25: Composition of Middle 40% income (% pre-tax national income)

Figure C26: Composition of Top 10% income (% pre-tax national income)

Figure C27: Composition of Top 10-1% income (% pre-tax national income)

Figure C28: Composition of Top 1% income (% pre-tax national income)

Figure C29: Composition of Top 1-0.1% income (% pre-tax national income)

Figure C30: Composition of Top 0.1% income (% pre-tax national income)

Income concentration

Figure C31: Top labor income shares in France, 1970-2012 (% pre-tax labor income)

Figure C32: Income concentration in France, 1970-2013, Top 0,1% (income share, % pre-tax national income)

Figure C33: Income concentration in France, Middle 40%, 1970-2013 (income share, % pre-tax national income)

Figure C34: Income concentration in France, 1970-2013 (income shares, % pre-tax national income)

Figure C35: Income concentration in France, Bottom 50%, 1970-2013 (income share, % pre-tax national income)

Figure C36: Income concentration in France, 1970-2013 (income shares, % pre-tax national income)

Gender capital income ratio by age

Figure C40: Gender capital income ratio in France by age (capital income among adults)

Figures on correlation between wealth and income

Figure C50: Labor income rank vs mean wealth rank

Figure C51: Probability for each labor income group to access the top 0.5% wealth group

Figure C52: Probability for each labor income group to access the top 0.5% wealth group

Figure C1. Income shares: tabulations vs micro-files
(tax units, fiscal income excl. cap.gains)

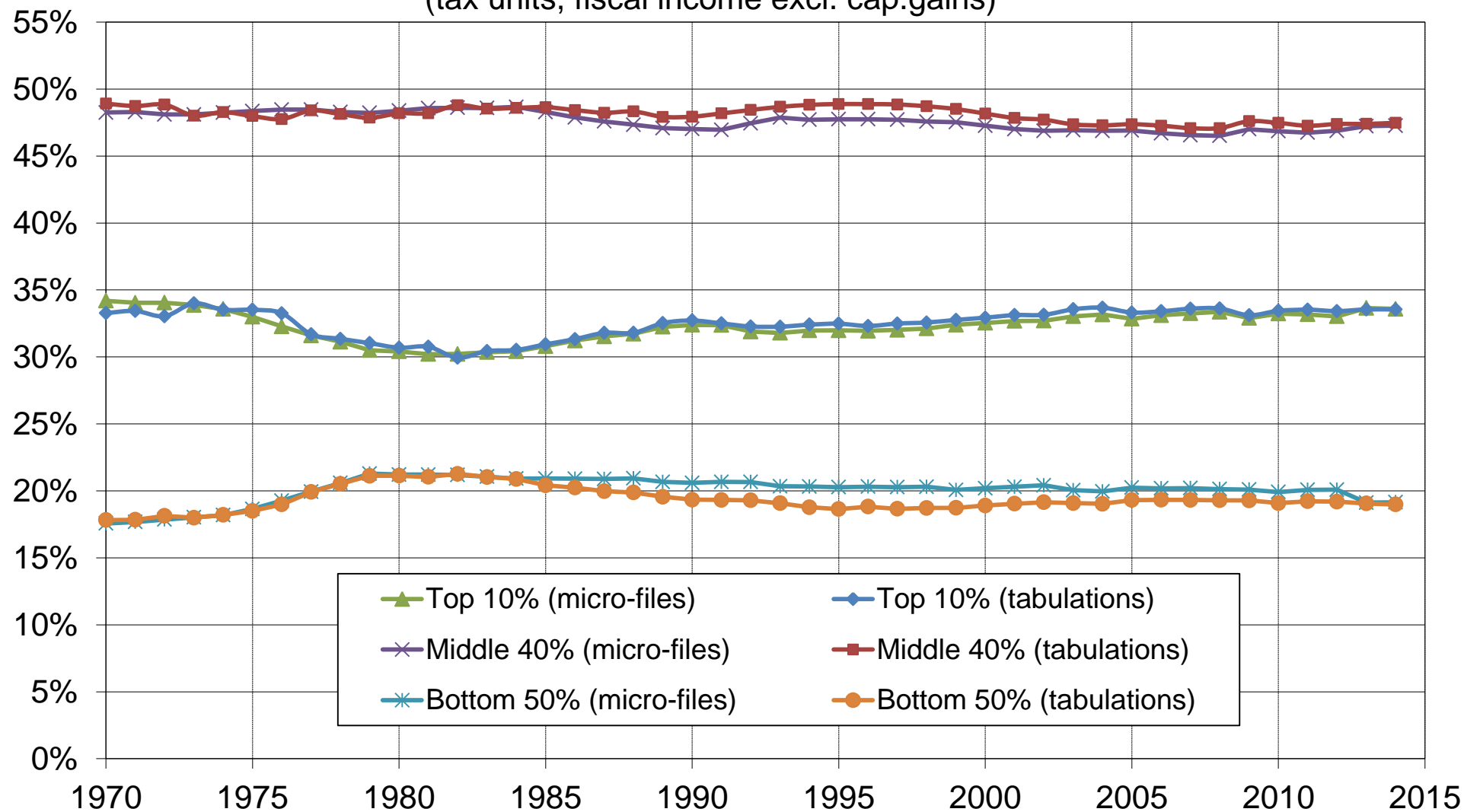


Figure C2. Top shares: tabulations vs micro-files
(tax units, fiscal income excl. cap.gains)

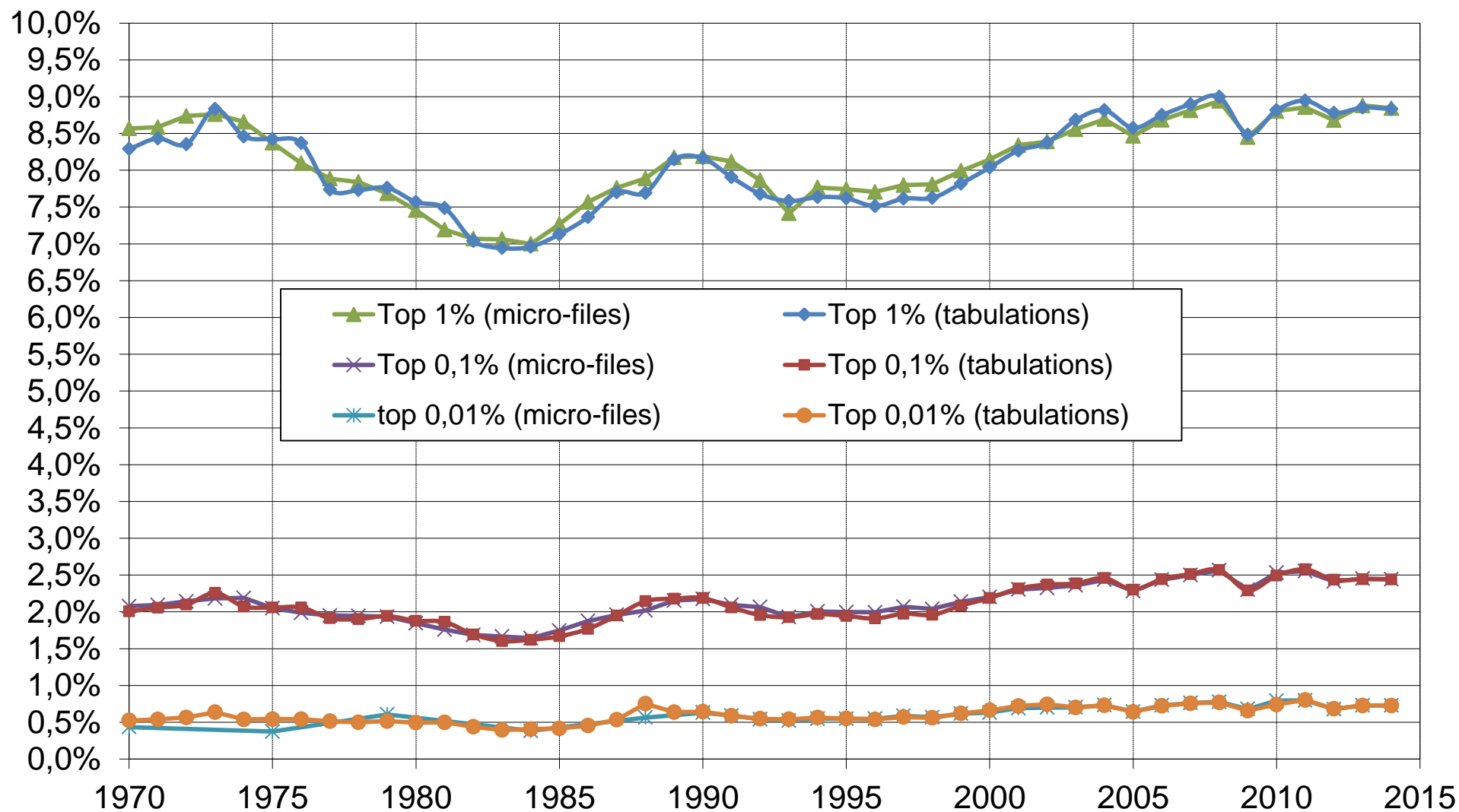


Figure C3. Income shares: tabulations vs micro-files
(equal-split individuals, fiscal income excl. cap.gains)

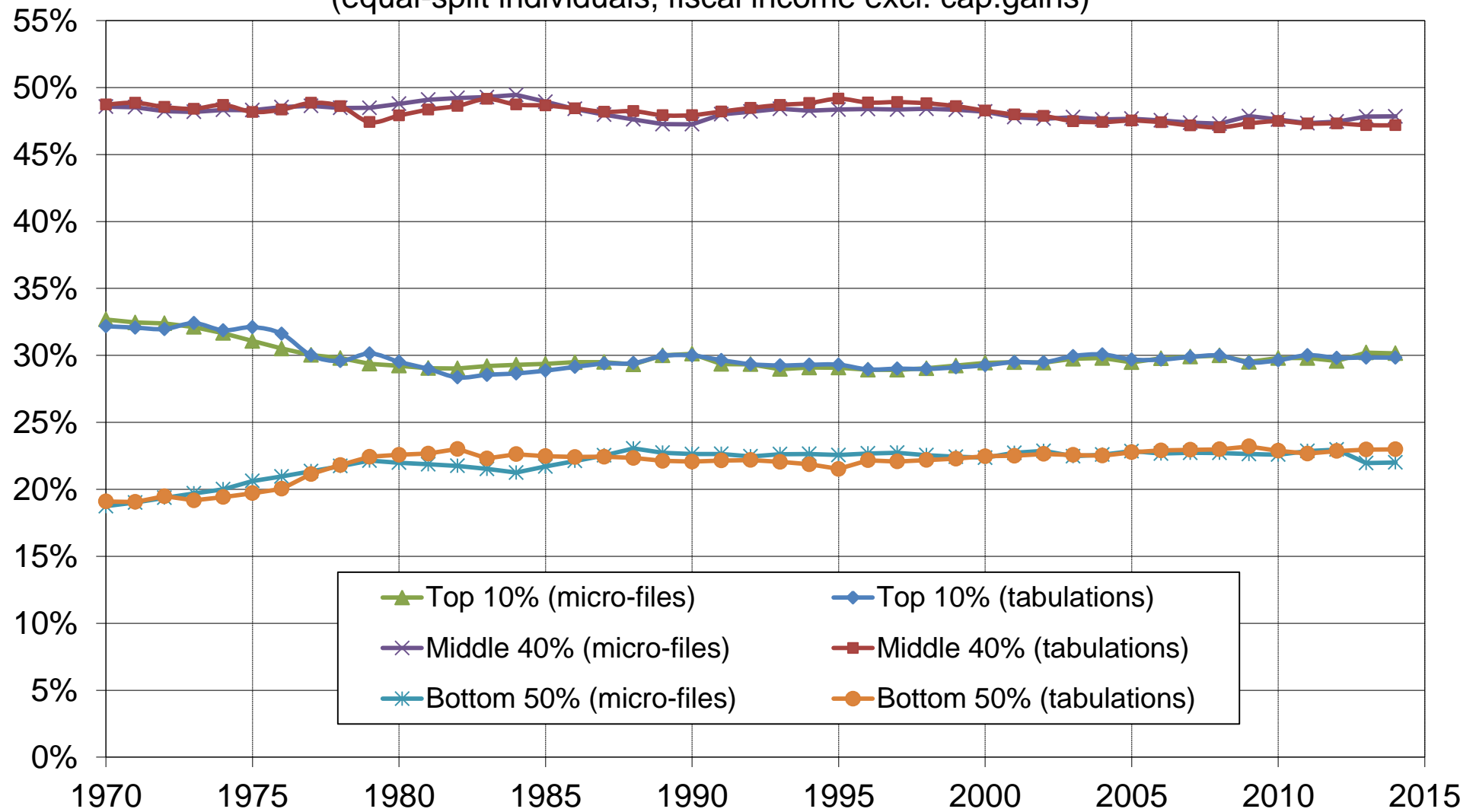


Figure C4. Income shares: fiscal income vs national income

(micro-files, equal-split individuals, fiscal income excl. cap.gains vs pretax national income)

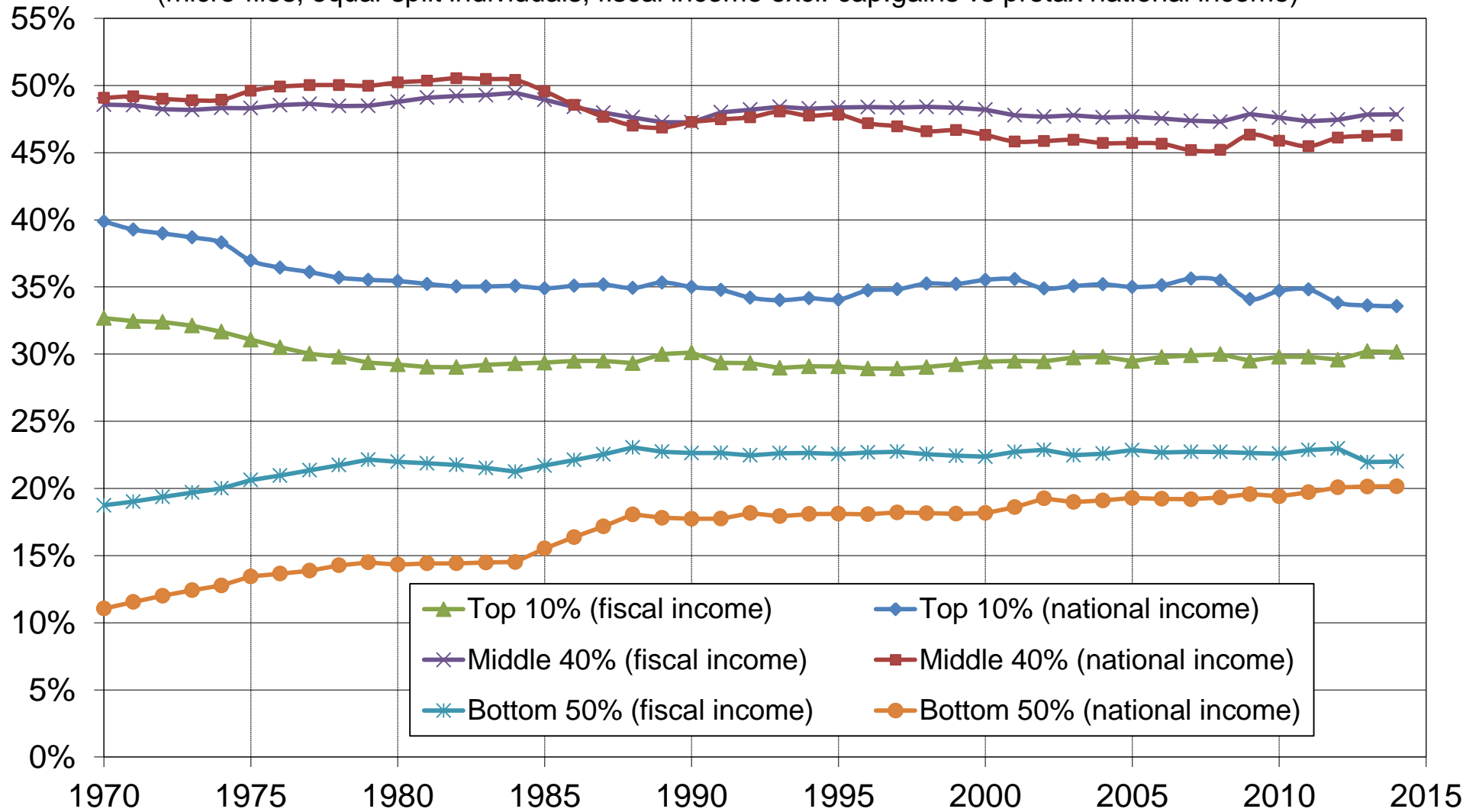


Figure C5. Top shares: fiscal income vs national income

(micro-files, equal-split individuals, fiscal income excl. cap.gains vs pretax national income)

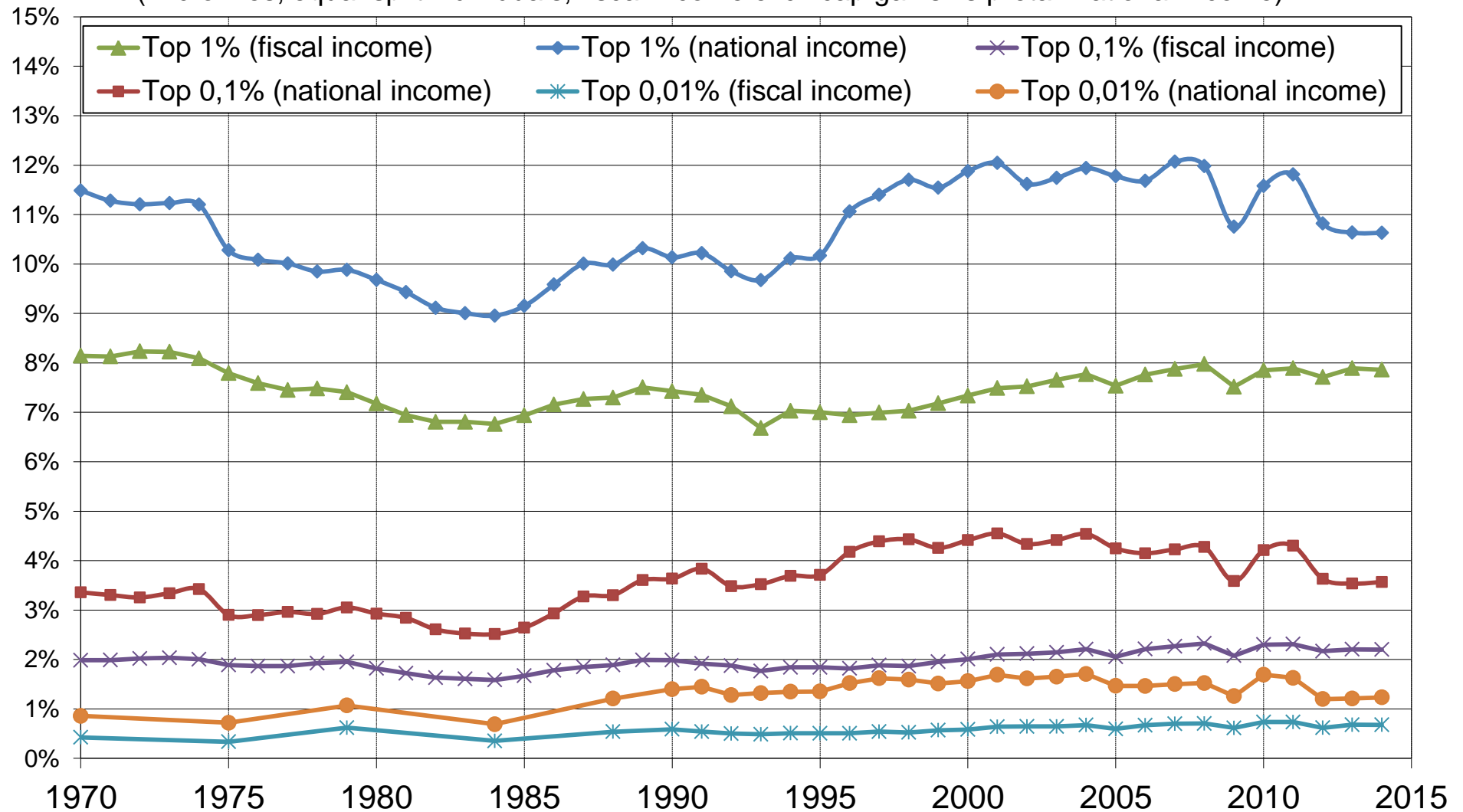


Figure C20: Income composition by income level, France 1970

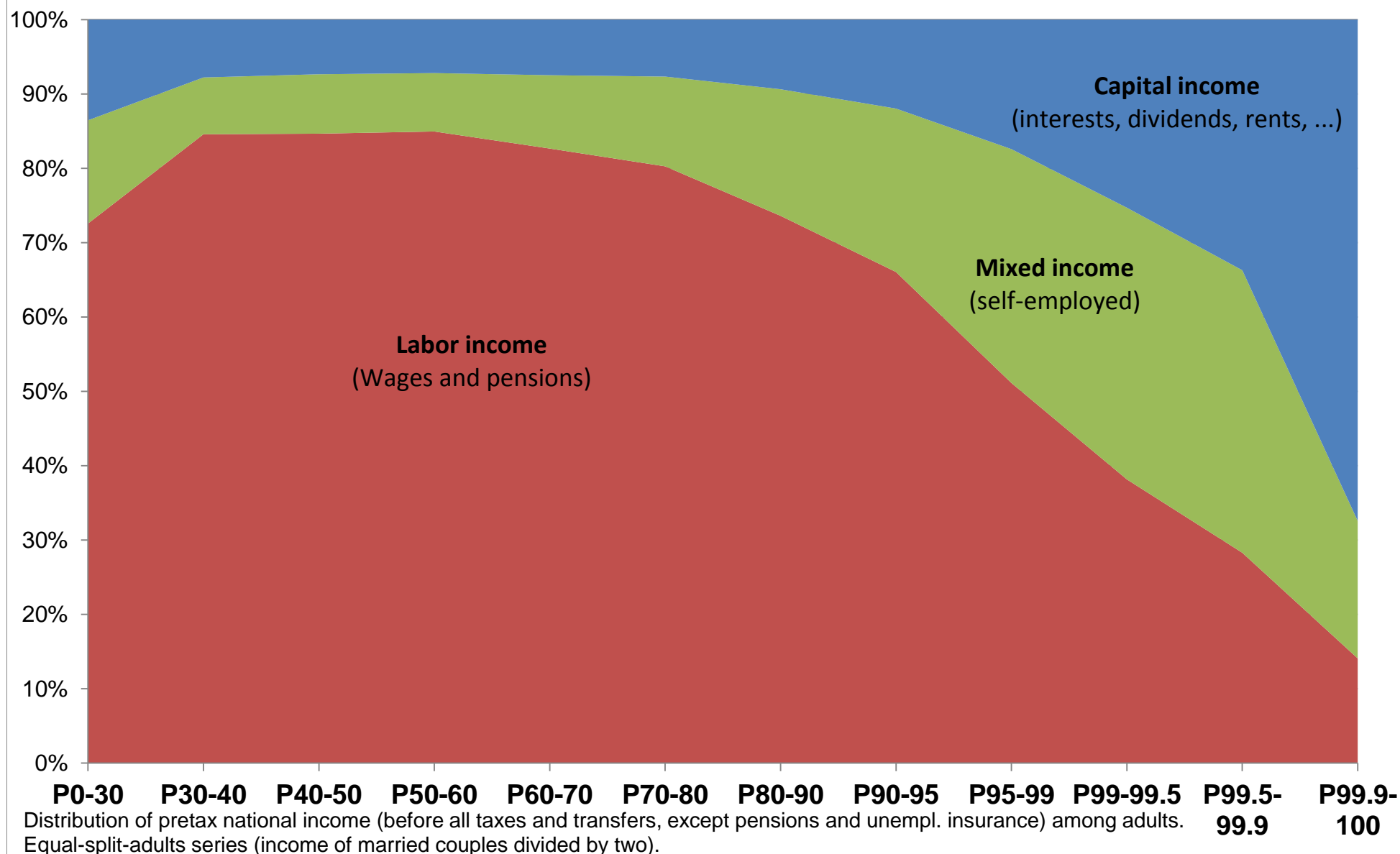


Figure C21: Income composition by income level, France 1984

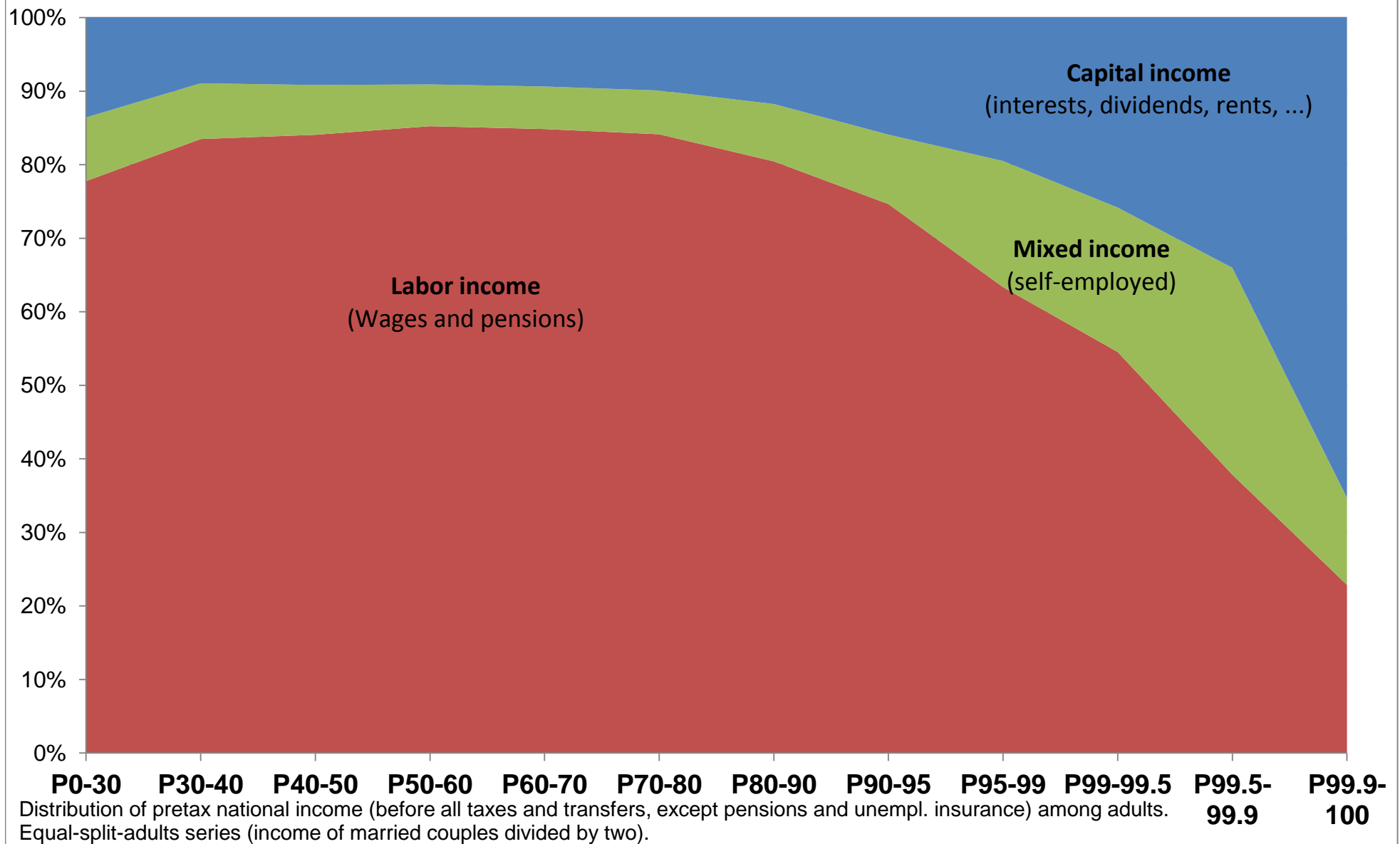


Figure C22: Income composition by income level, France 2000

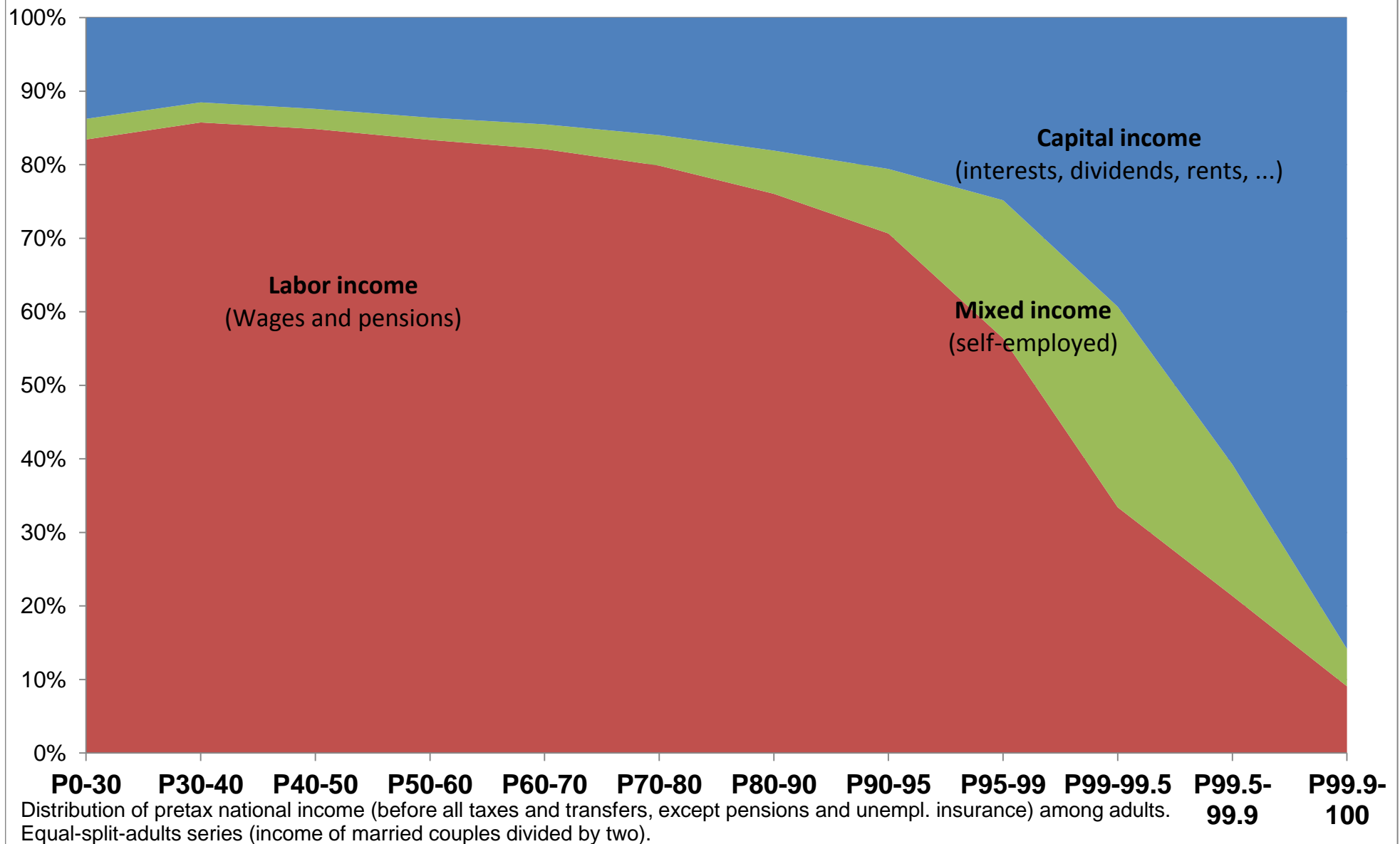


Figure C23: Income composition by income level, France 2012

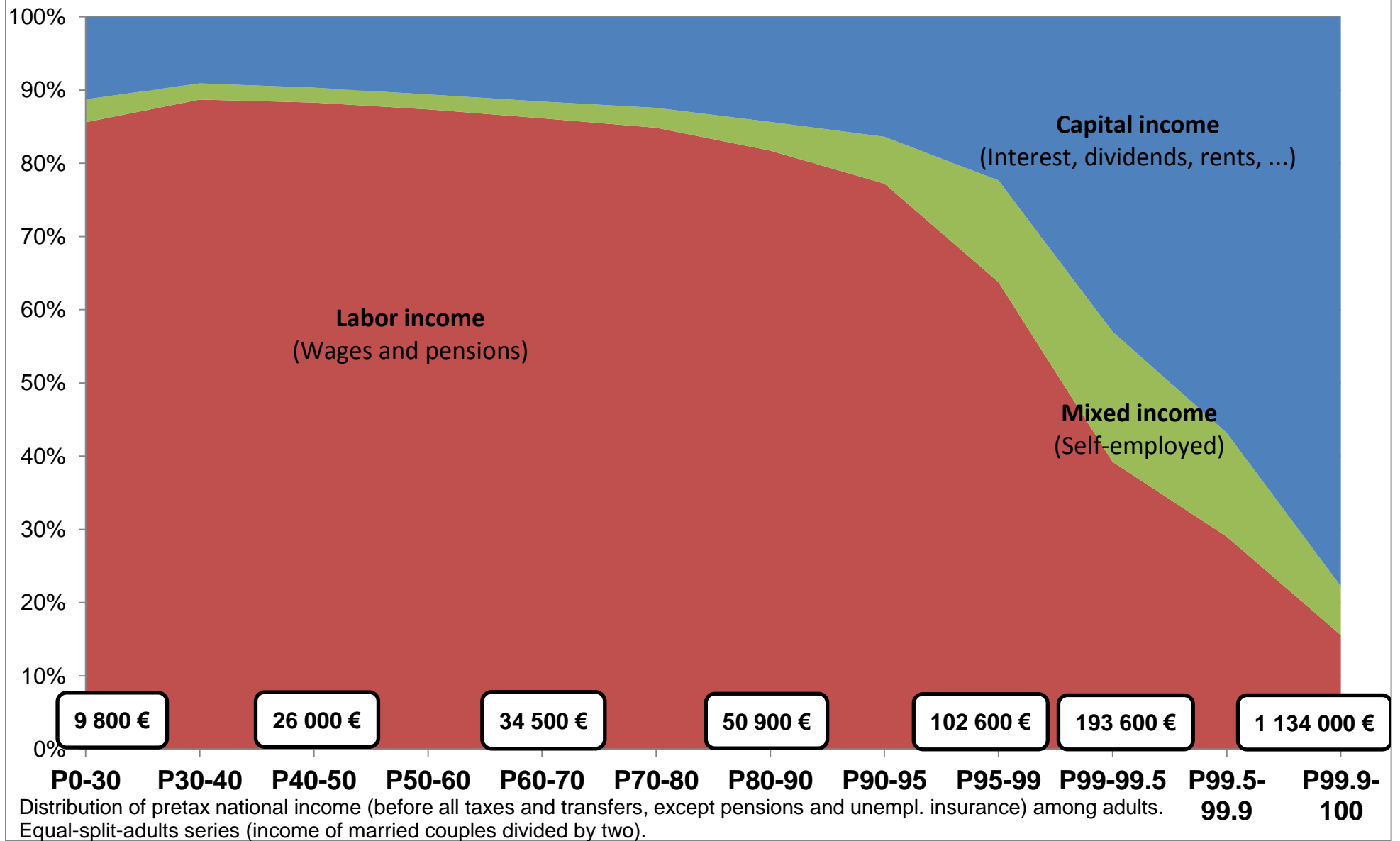
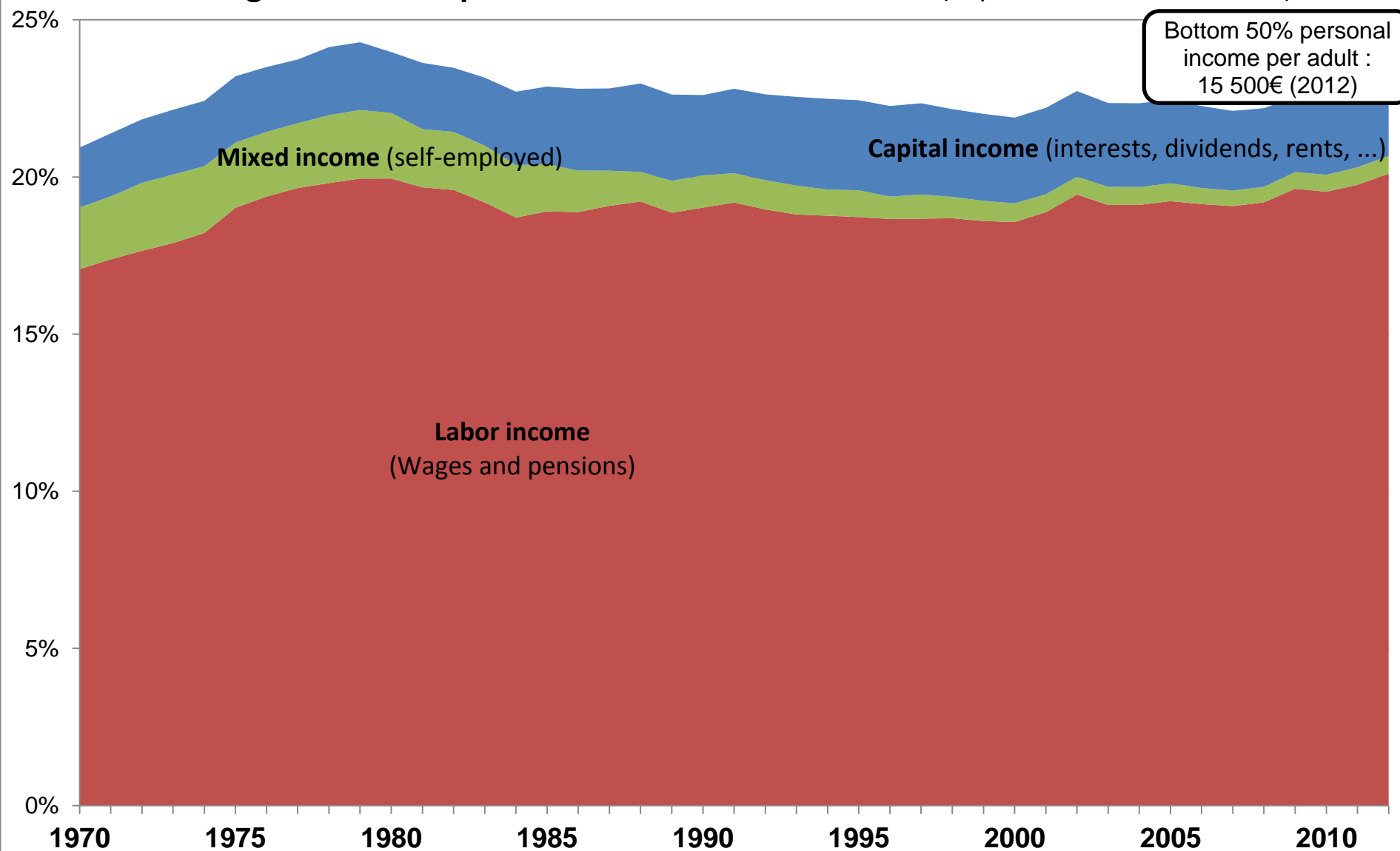
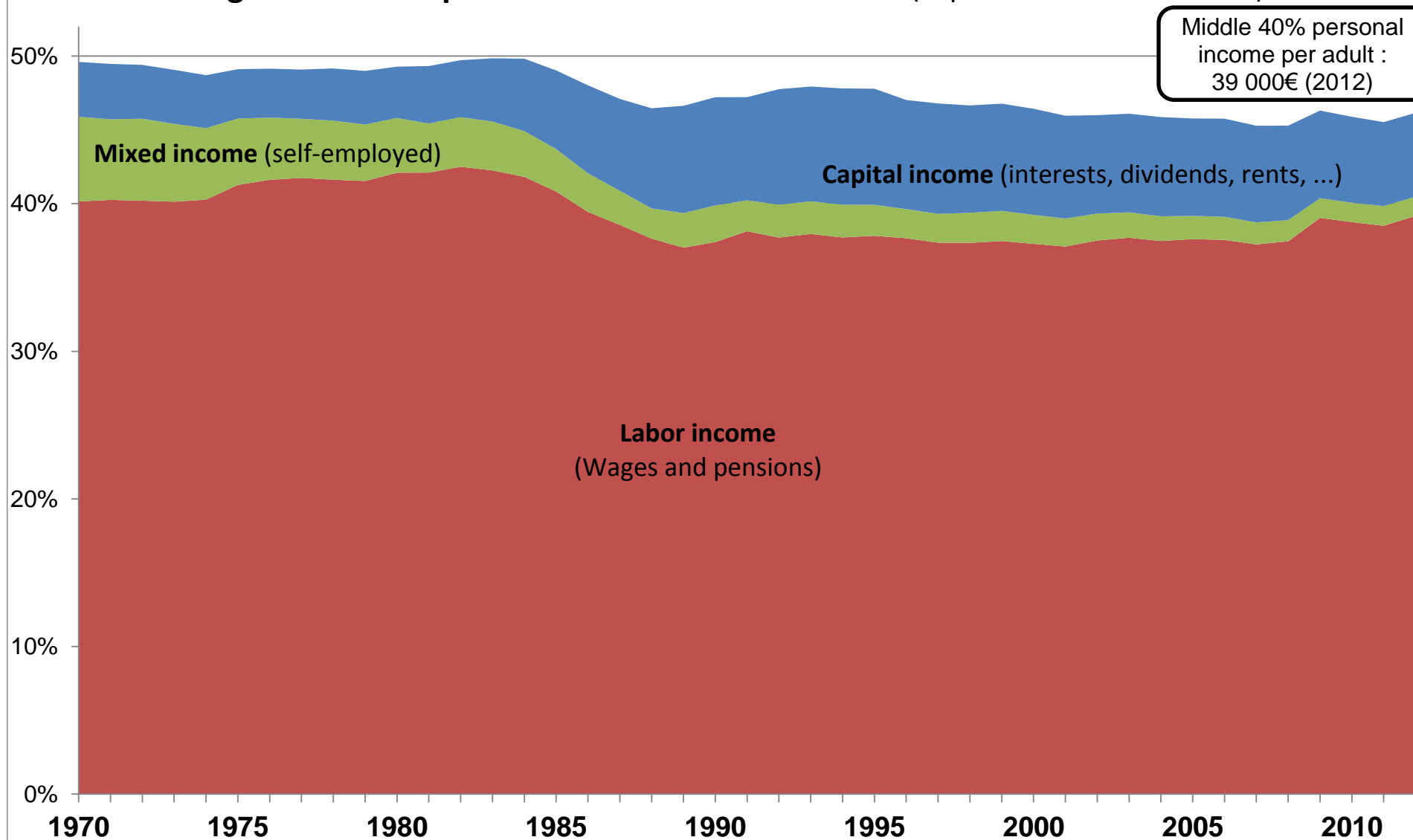


Figure C24: Composition of Bottom 50% income (% pre-tax national income)



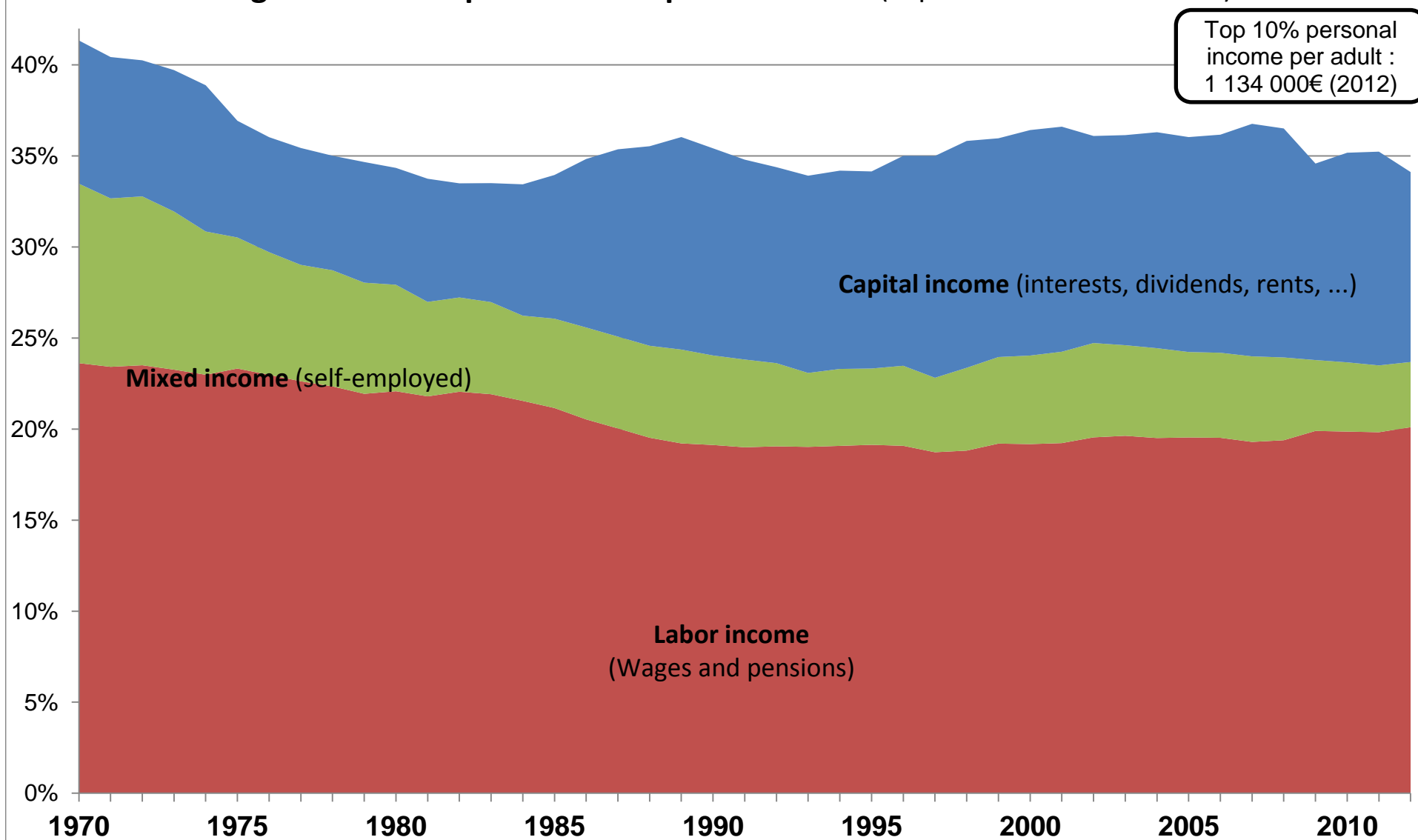
Distribution of pretax national income (before all taxes and transfers, except pensions and unempl. insurance) among adults.
Equal-split-adults series (income of married couples divided by two).

Figure C25: Composition of Middle 40% income (% pre-tax national income)



Distribution of pretax national income (before all taxes and transfers, except pensions and unempl. insurance) among adults.
Equal-split-adults series (income of married couples divided by two).

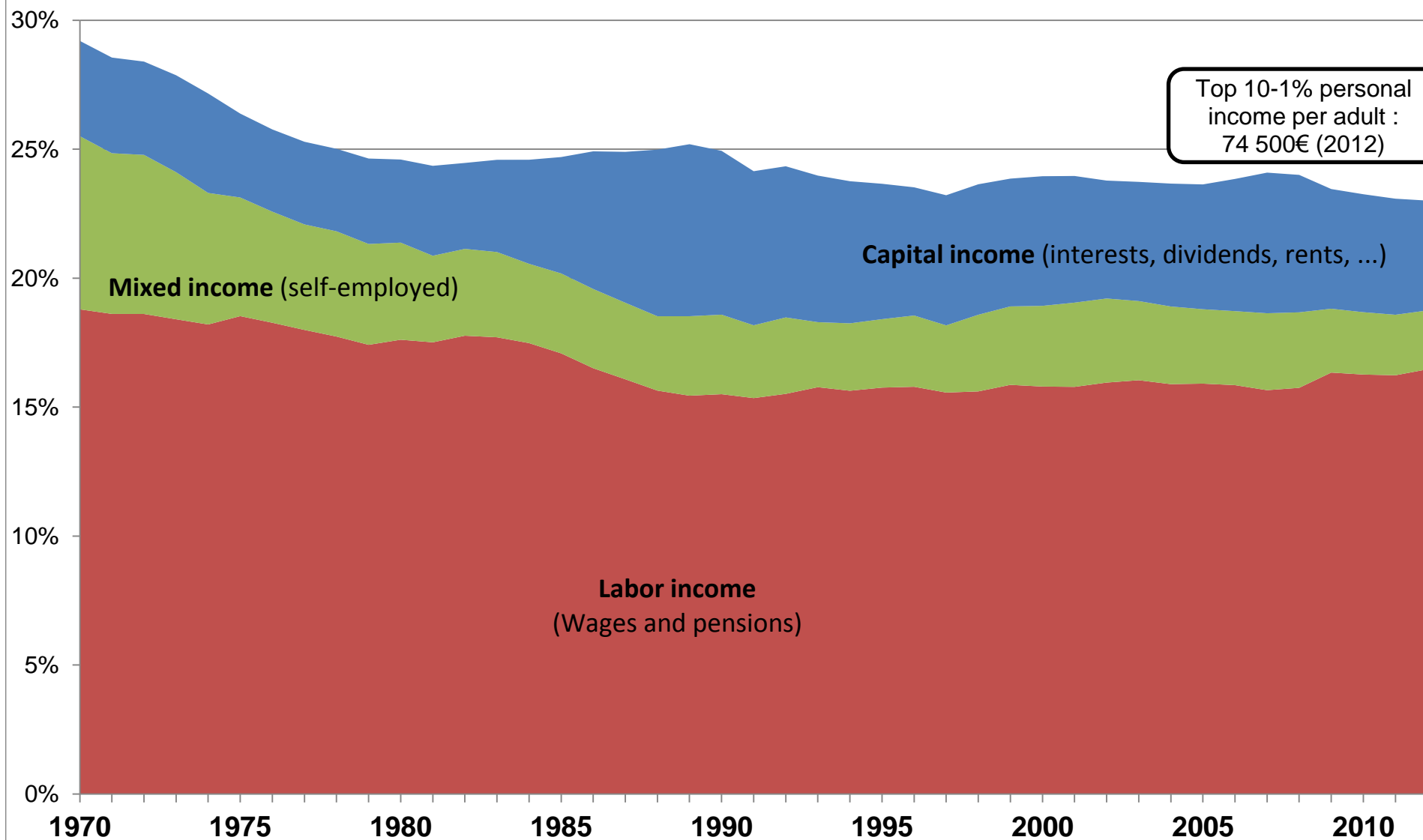
Figure C26: Composition of Top 10% income (% pre-tax national income)



Top 10% personal
income per adult :
1 134 000€ (2012)

Distribution of pretax national income (before all taxes and transfers, except pensions and unempl. insurance) among adults.
Equal-split-adults series (income of married couples divided by two).

Figure C27: Composition of Top 10-1% income (% pre-tax national income)

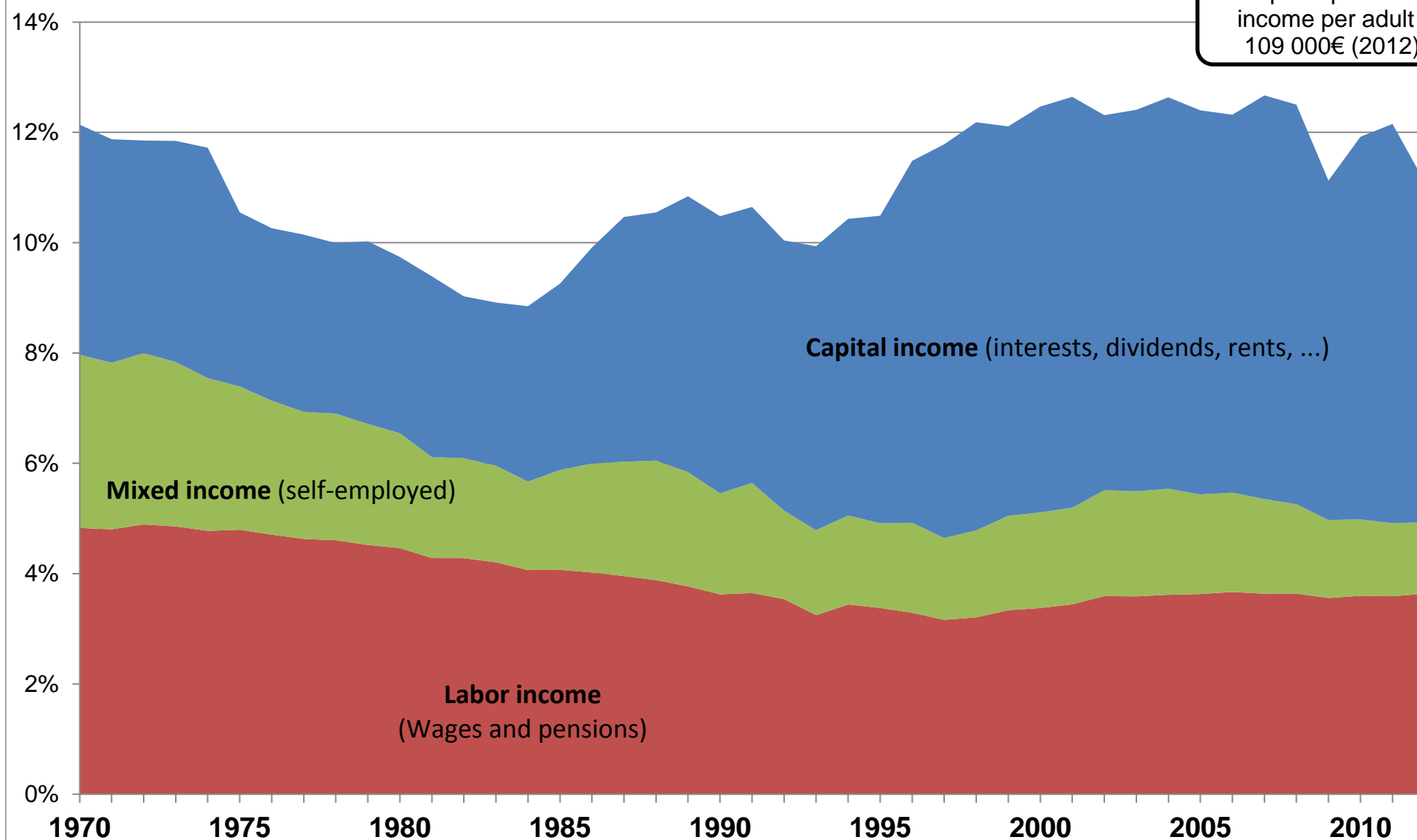


Top 10-1% personal
income per adult :
74 500€ (2012)

Distribution of pretax national income (before all taxes and transfers, except pensions and unempl. insurance) among adults.
Equal-split-adults series (income of married couples divided by two).

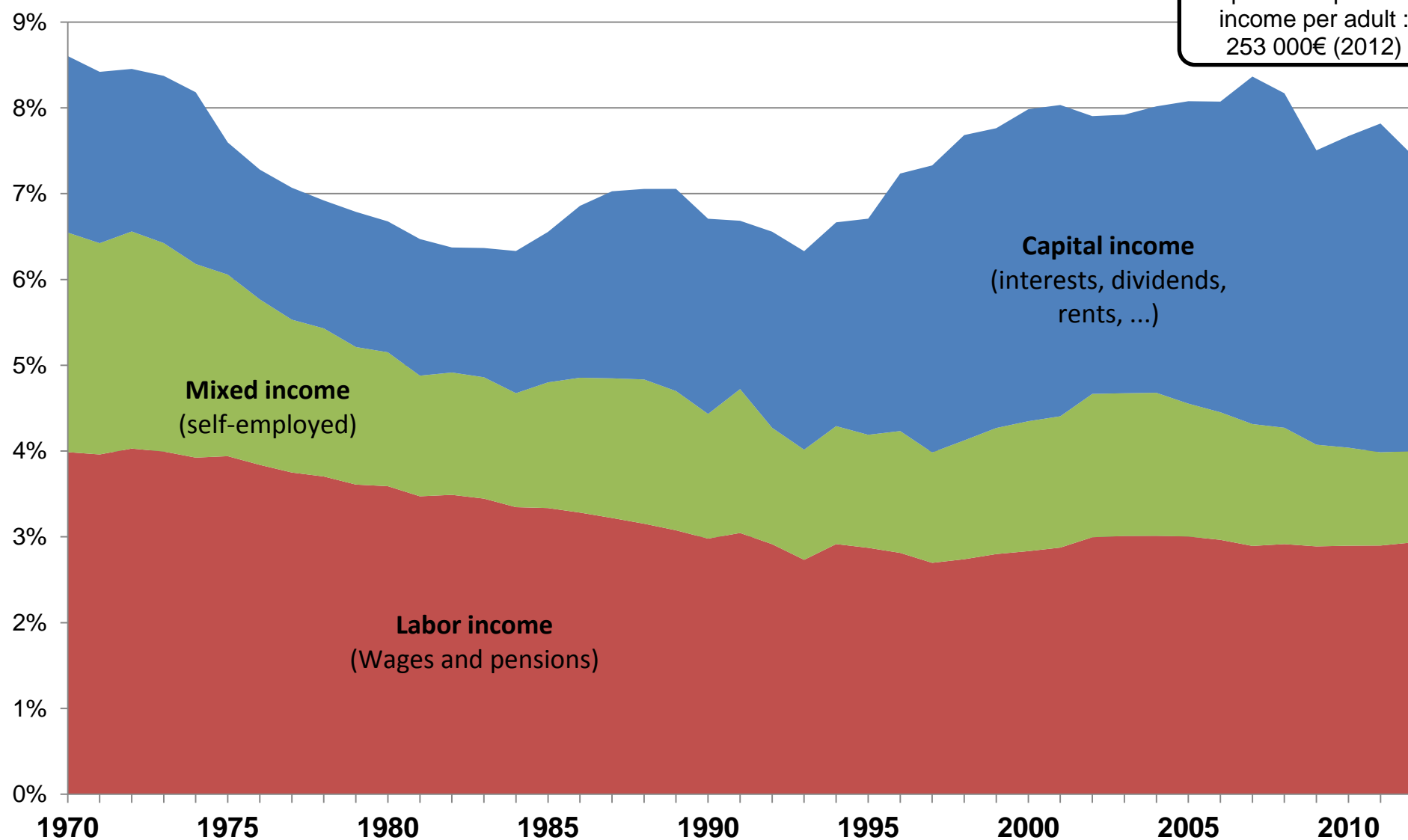
Figure C28: Composition of Top 1% income (% pre-tax national income)

Top 1% personal
income per adult :
109 000€ (2012)



Distribution of pretax national income (before all taxes and transfers, except pensions and unempl. insurance) among adults.
Equal-split-adults series (income of married couples divided by two).

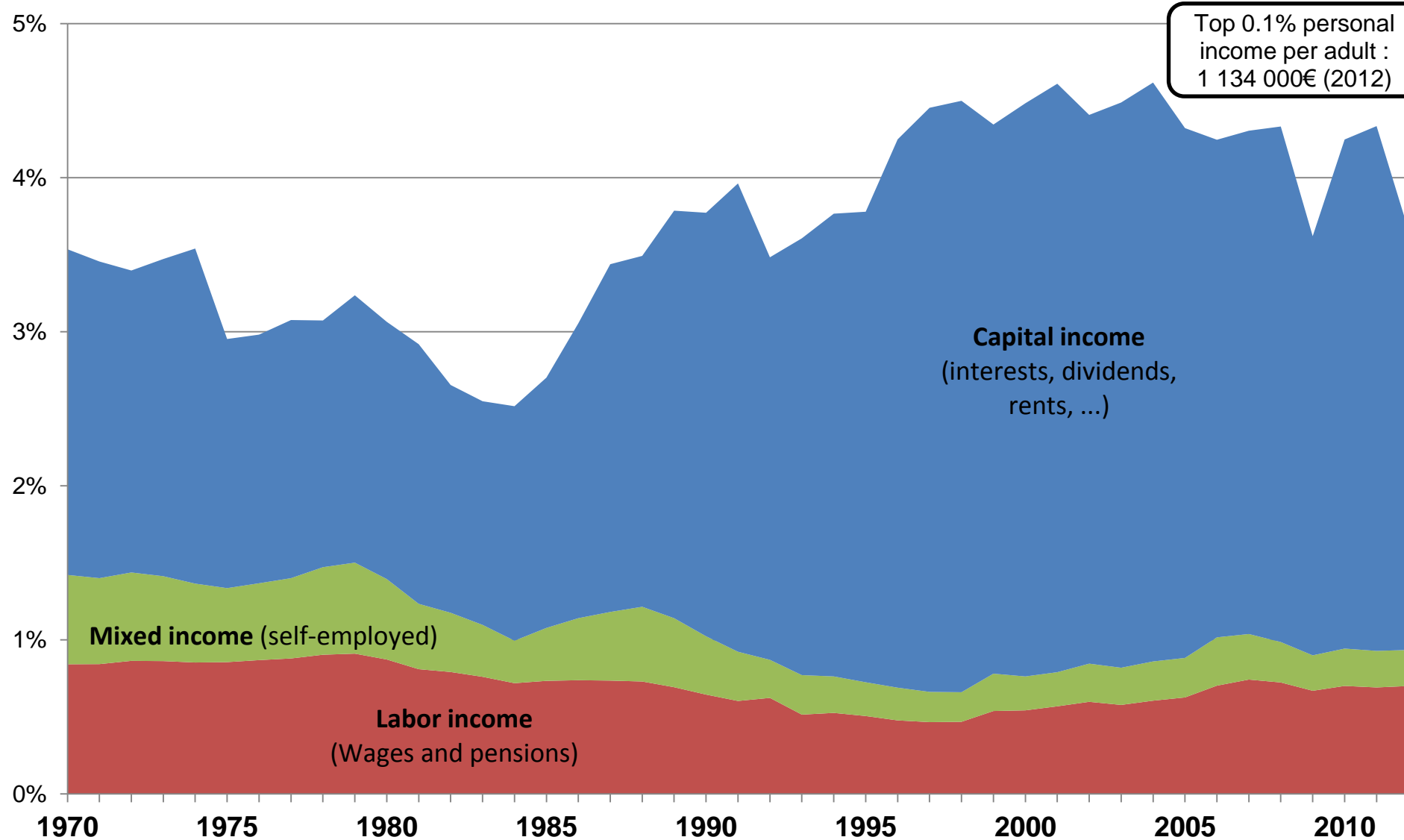
Figure C29: Composition of Top 1-0.1% income (% pre-tax national income)



Top 1-0.1% personal
income per adult :
253 000€ (2012)

Distribution of pretax national income (before all taxes and transfers, except pensions and unempl. insurance) among adults.
Equal-split-adults series (income of married couples divided by two).

Figure C30: Composition of Top 0.1% income (% pre-tax national income)



Distribution of pretax national income (before all taxes and transfers, except pensions and unempl. insurance) among adults.
Equal-split-adults series (income of married couples divided by two).

Figure C40: Gender capital income ratio in France by age

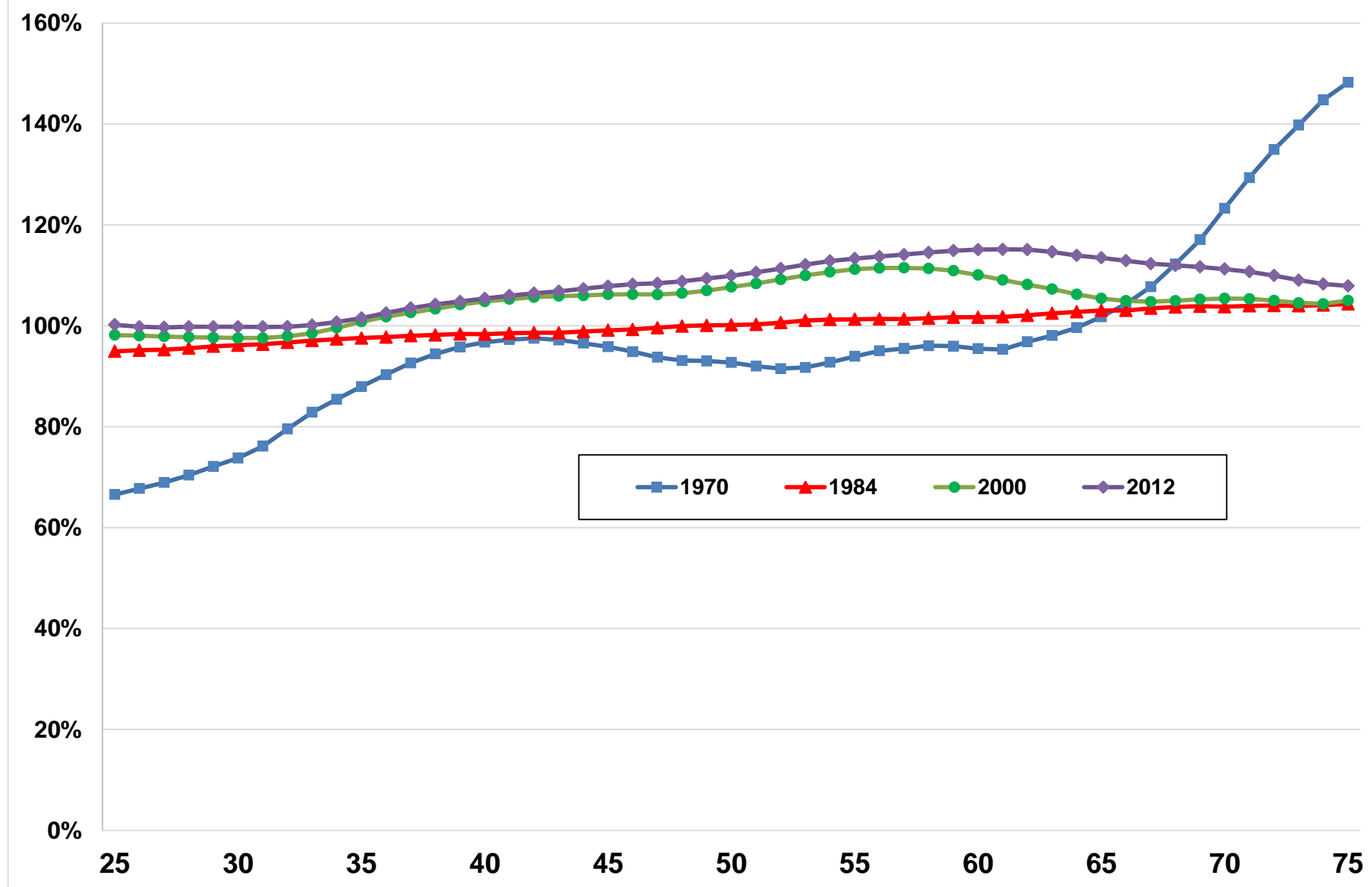


Figure C50: Labor income rank vs mean wealth rank

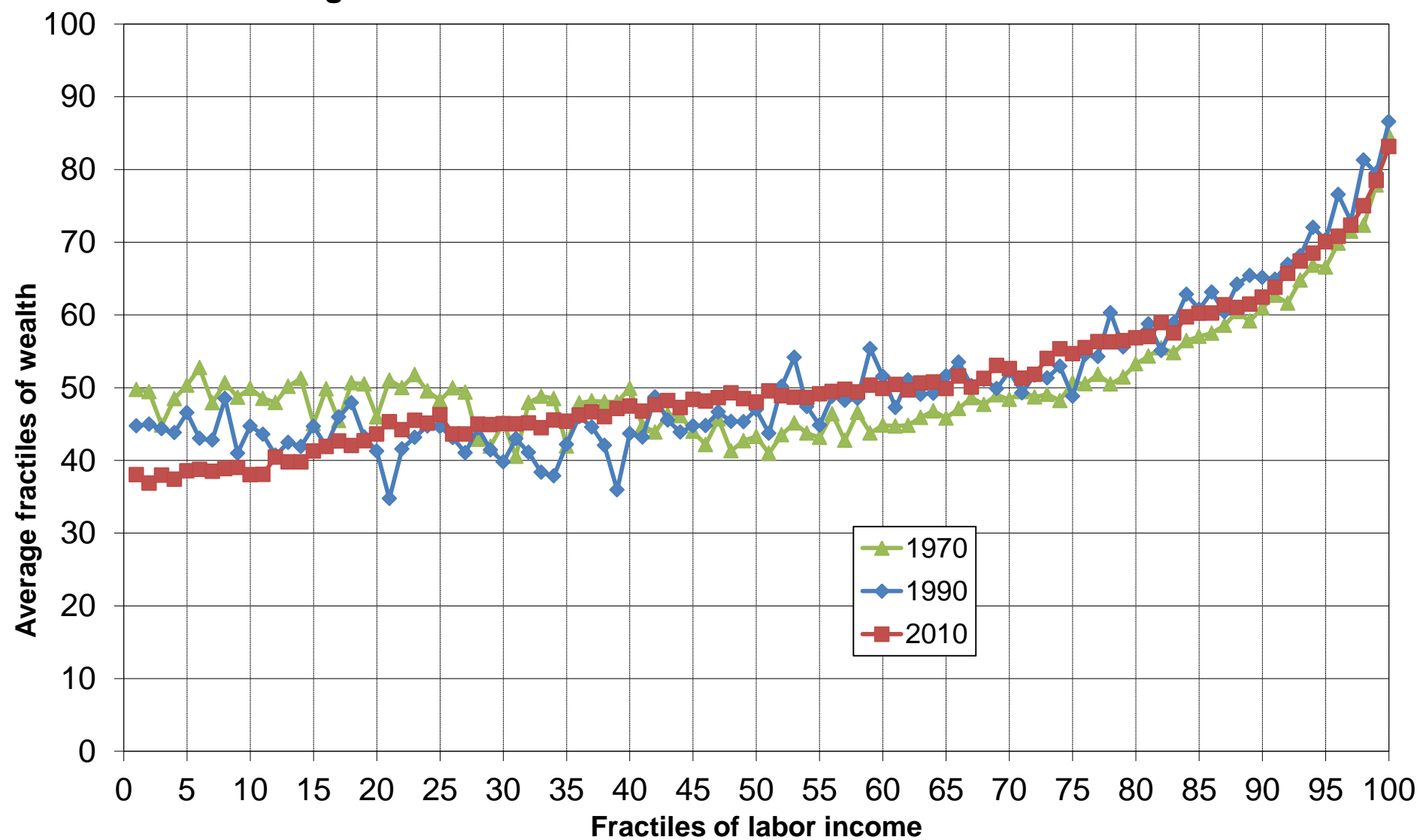


Figure C51: Probability for each labor income group to access the top 1% wealth group

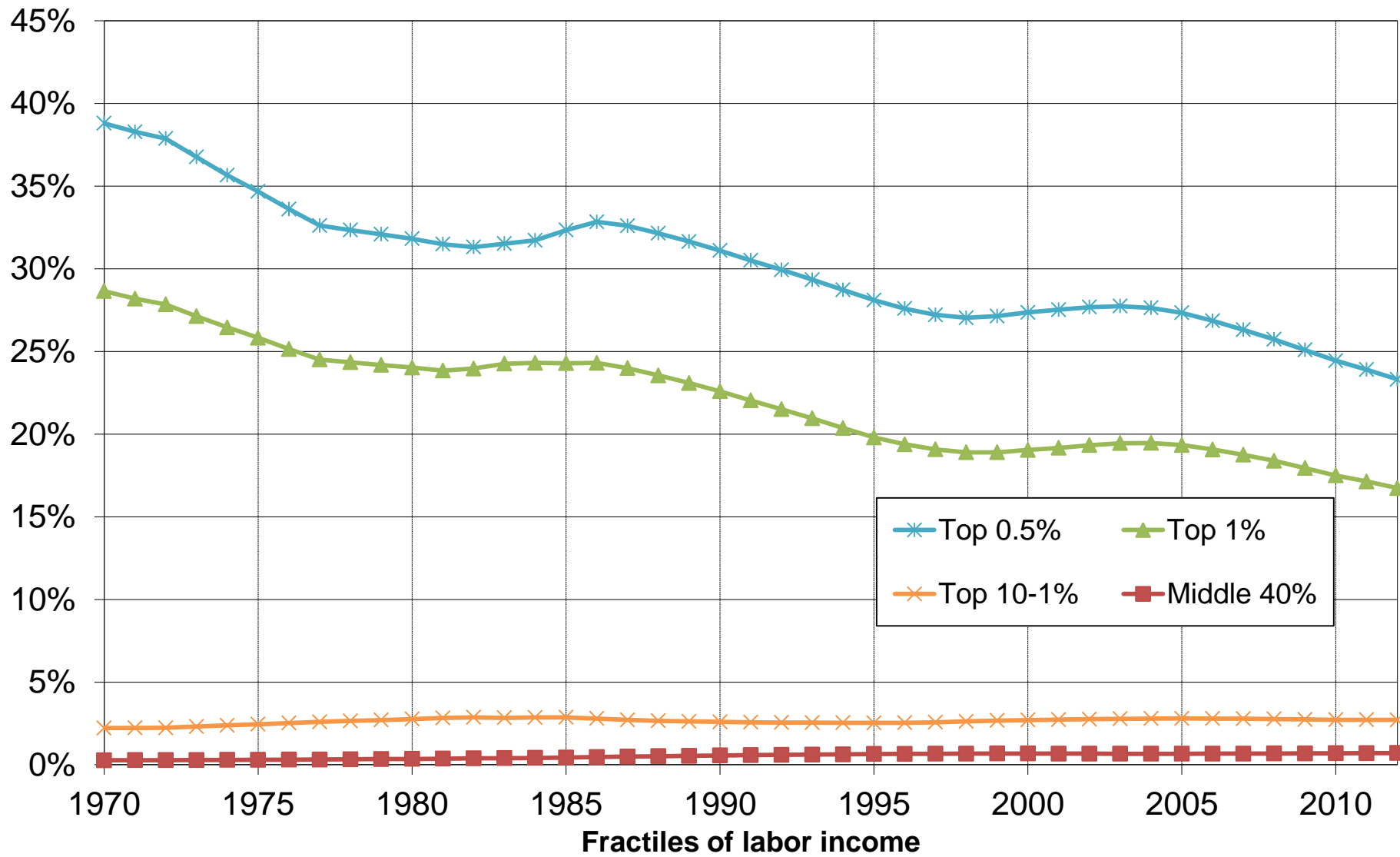


Figure C52: Probability for each labor income group to access the top 0.5% wealth group

